

Noise Management Office

Noise Management—Residential Sound Insulation Program



**1ST QUARTER
YEAR 2008**

INSIDE THIS ISSUE:

This report includes updated information regarding the Airport Noise Management System and the Residential Sound Insulation Program.

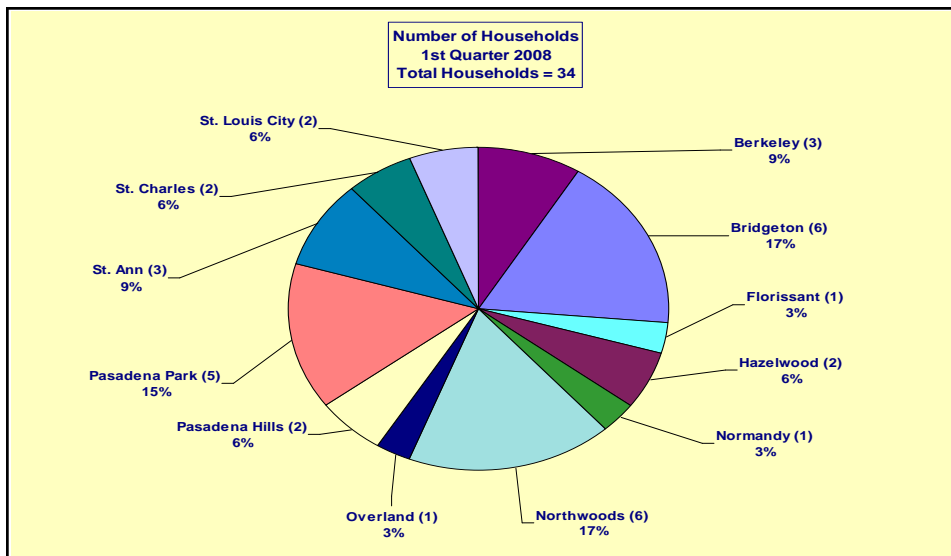
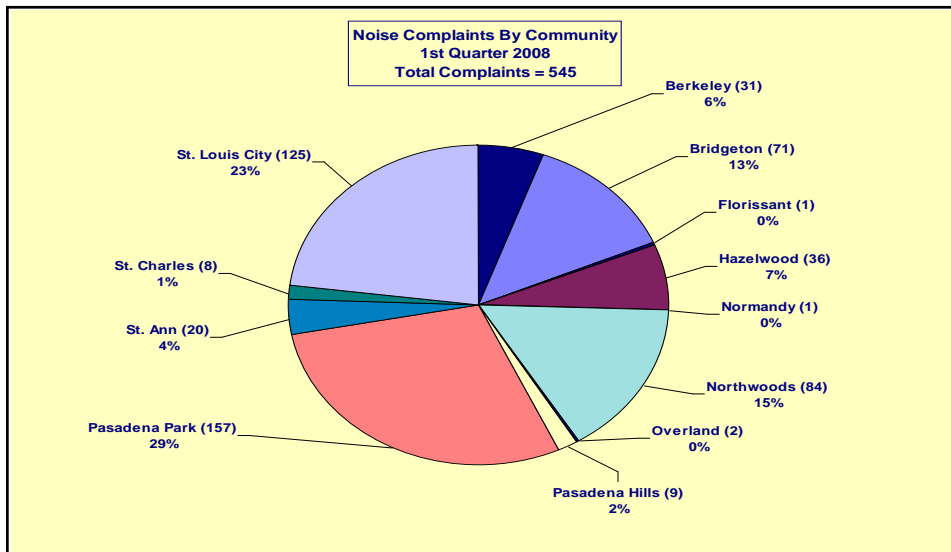
Noise Complaints

The charts below represent the noise complaints received by Community and also by Household for the 1st Quarter 2008.

As shown in Noise Complaints By Community, the City of Pasadena Park recorded the most noise complaints with a total of one hundred fifty seven (157). Of these, one hundred forty two (142) were from one individual. Next was the City of St. Louis with one hundred twenty five complaints, with 124 from one caller.

There were a total of five hundred forty five (545) complaints received from thirty four (34) separate callers.

Noise Complaints By Community	1
Number of Households	1
Noise Complaint Tally	2
Noise Complaint Locator Map Monitoring Site Locations	3
Noise Monitoring Data	4
Operations By Runway	5
Operations By Aircraft (Fleet Mix)	5
Operations By Airline	5
Residential Sound Insulation Program	6



The telephone number
for the
Noise Complaint Hot Line
is
(314) 551-5070

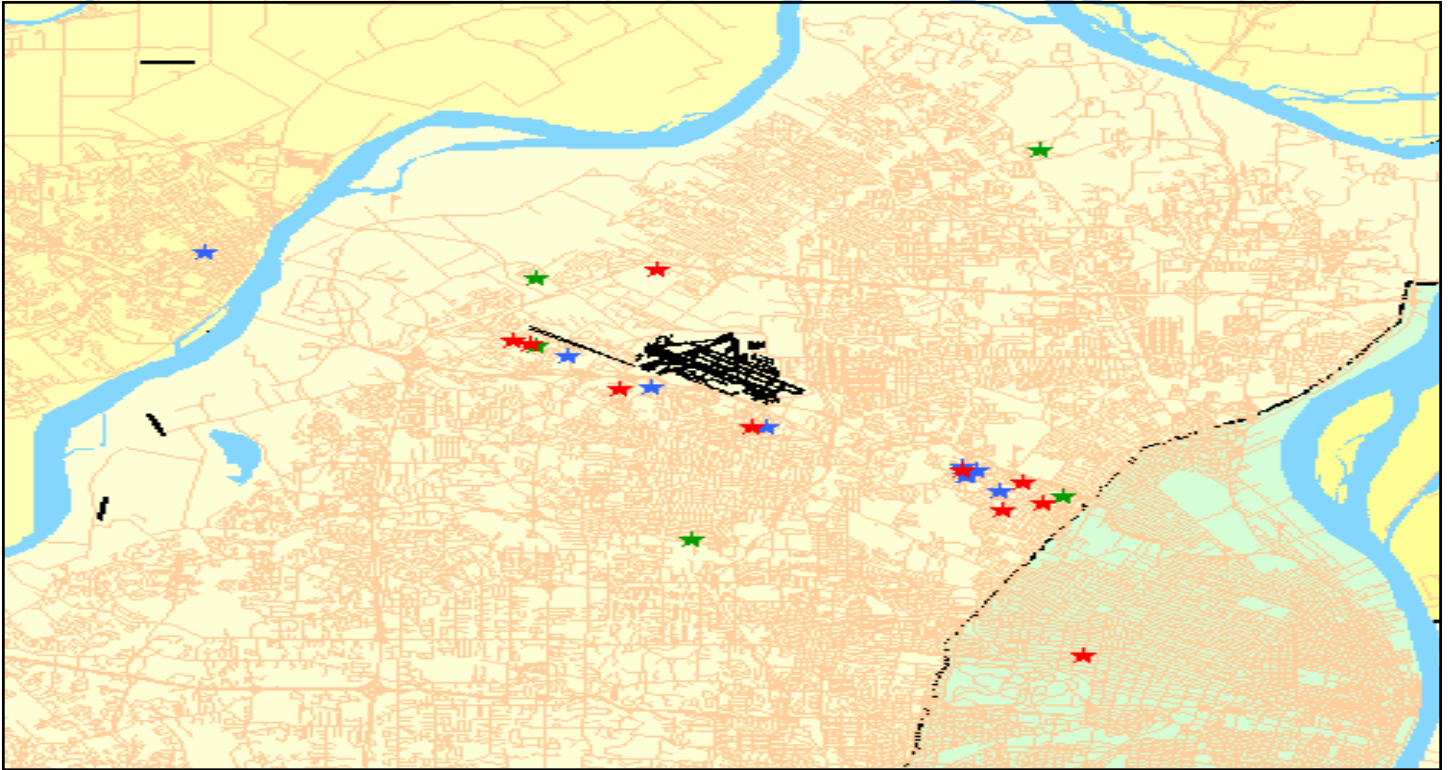
Our mailing address is
*Airport Planning
&
Development Office
Lambert-St. Louis
International Airport
P. O. Box 10212
St. Louis, Mo 63145*

Our phone numbers are:
Phone: (314) 551-5025
Fax: (314) 551-5013

Our location is
*11495 Old Natural Bridge
Bridgeton, Mo 63044
(formerly the
TWA Training Center)*

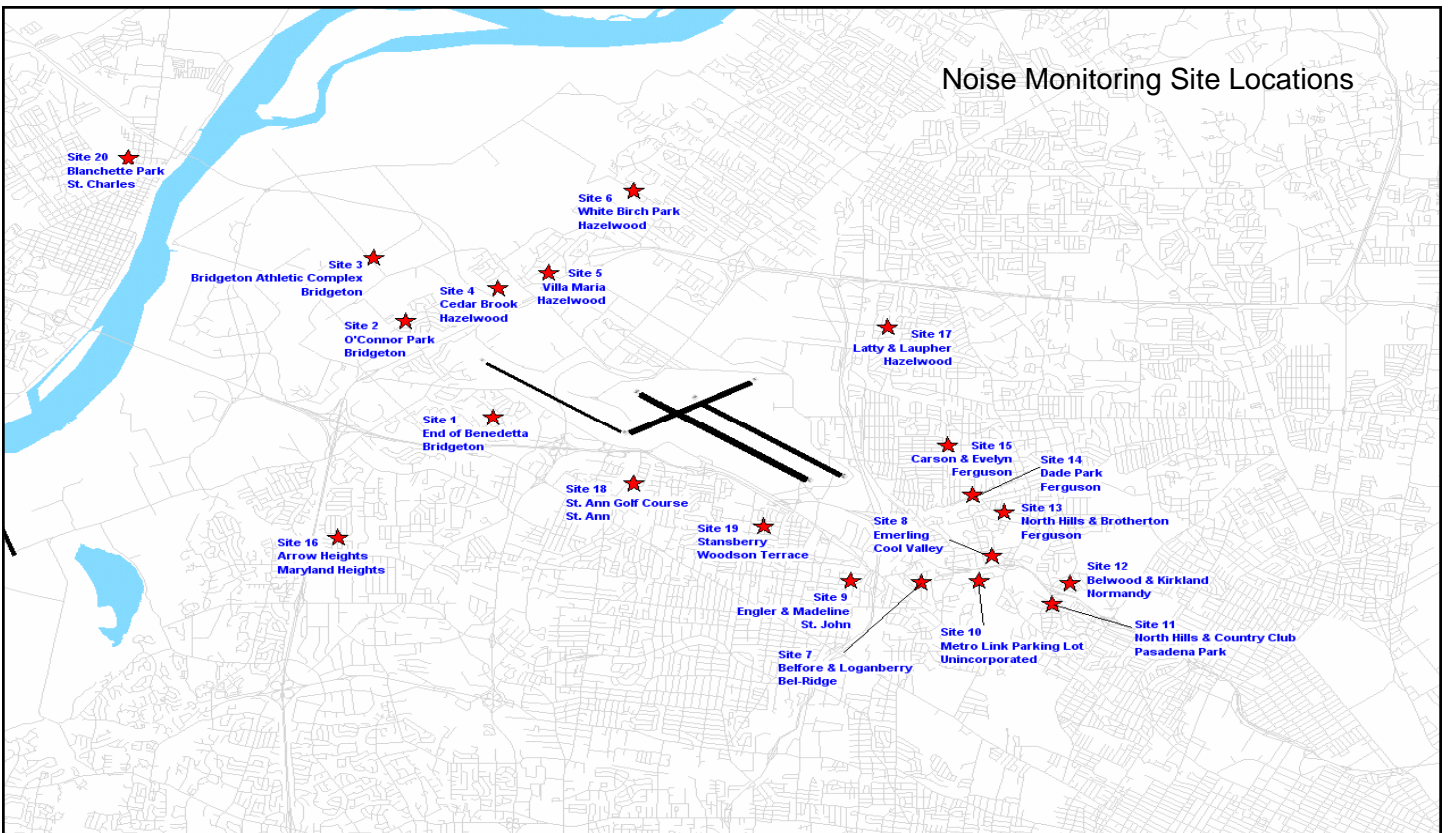
NOISE COMPLAINTS

This chart shows the locations of the noise complaints for the 1st Quarter 2008. Green indicates one complaint, blue is 2-9 complaints, red is 10 complaints or more.



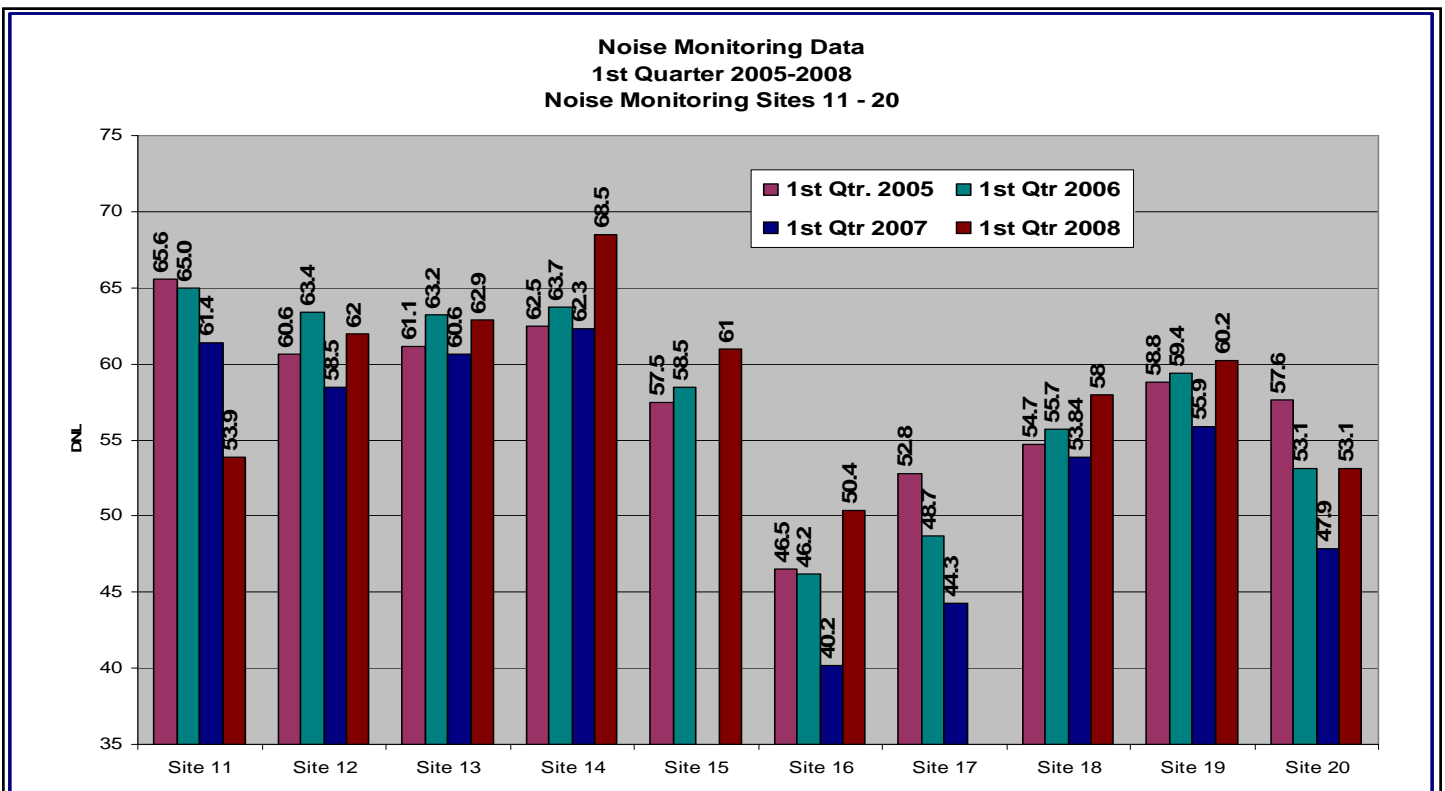
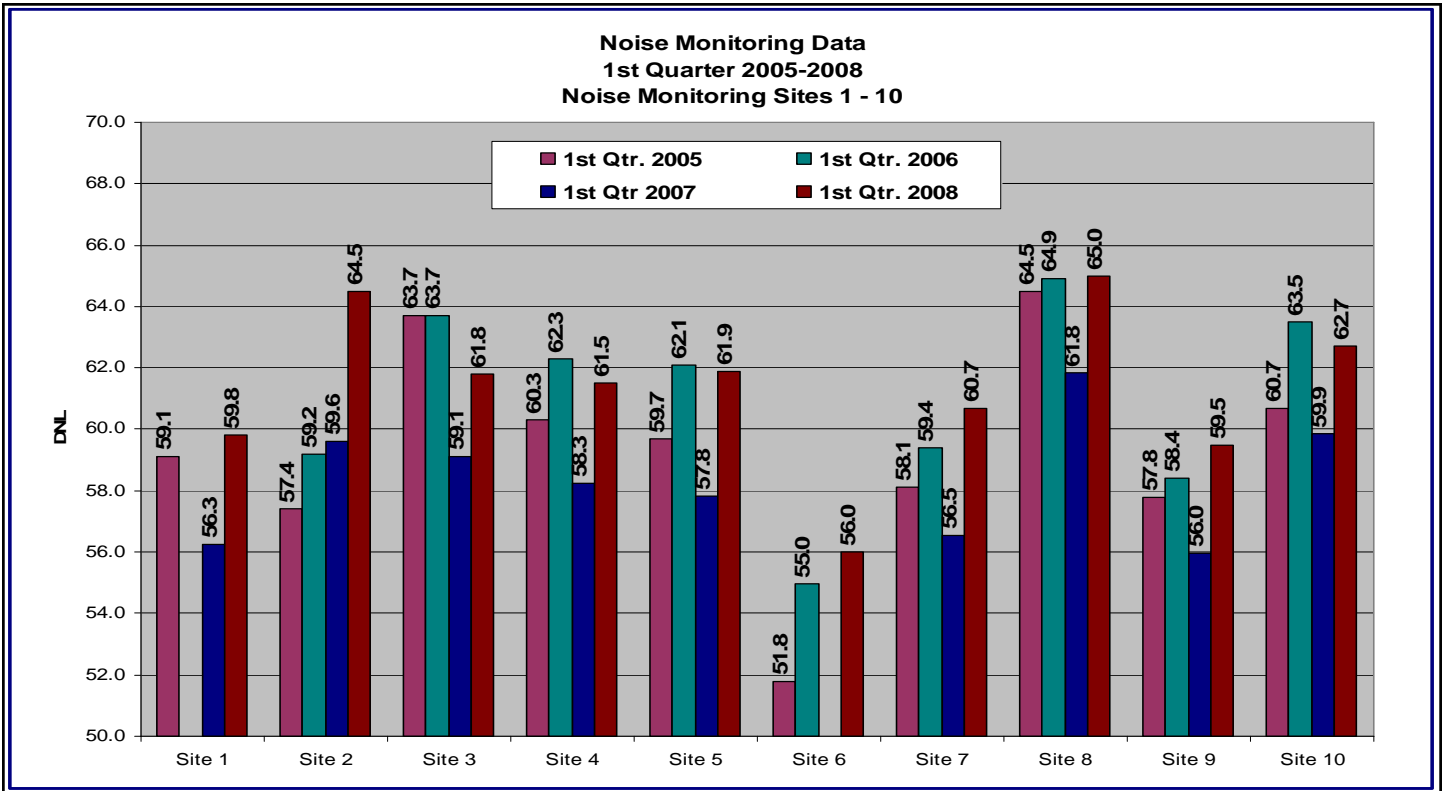
NOISE MONITORING

Noise Monitoring Site Locations

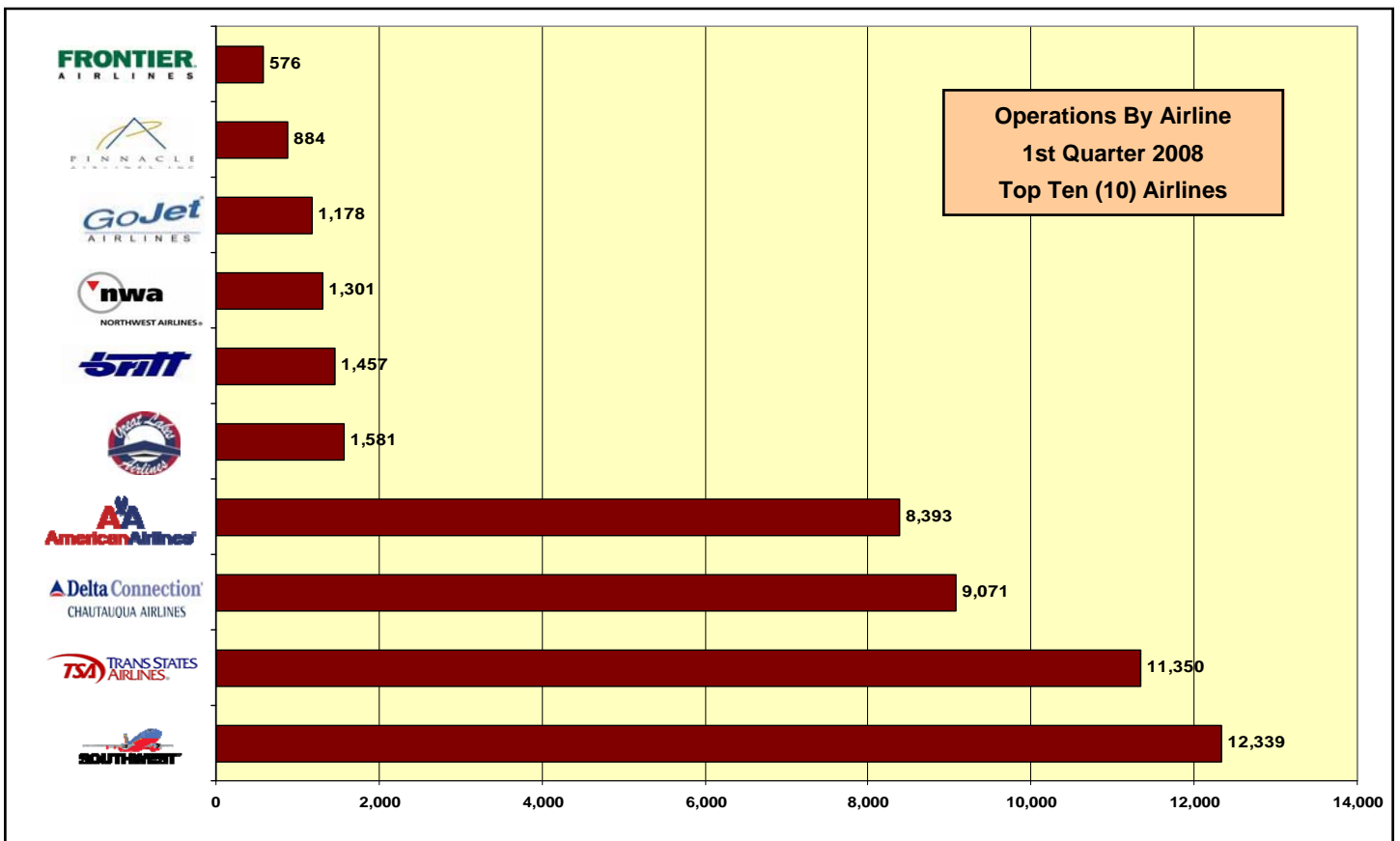
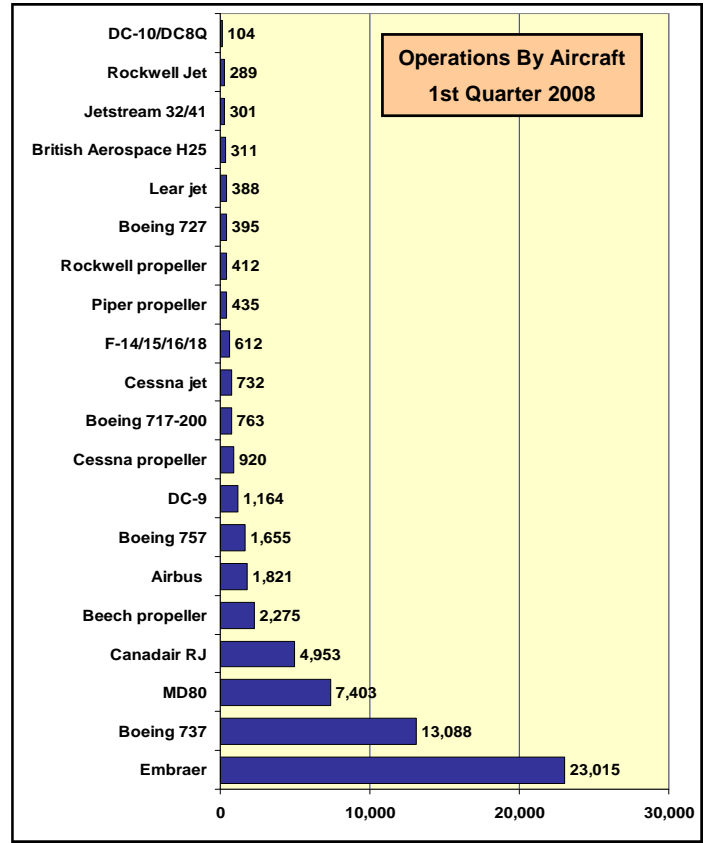
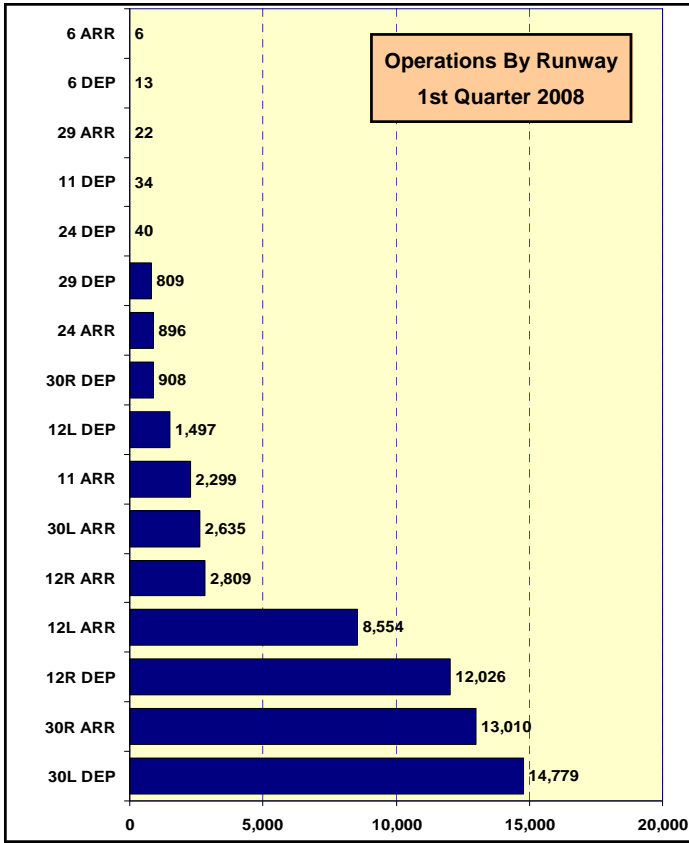


NOISE MONITORING

The following is a comparison of the 1st Quarter DNL values for the twenty permanent noise monitoring terminals for years 2005 to 2008. Site 17 was totally destroyed and has been removed from the system.



OPERATIONS



SOUND INSULATION PROGRAM

Photographs of windows prior to and after the installed window treatment was done at one of the selected homes.

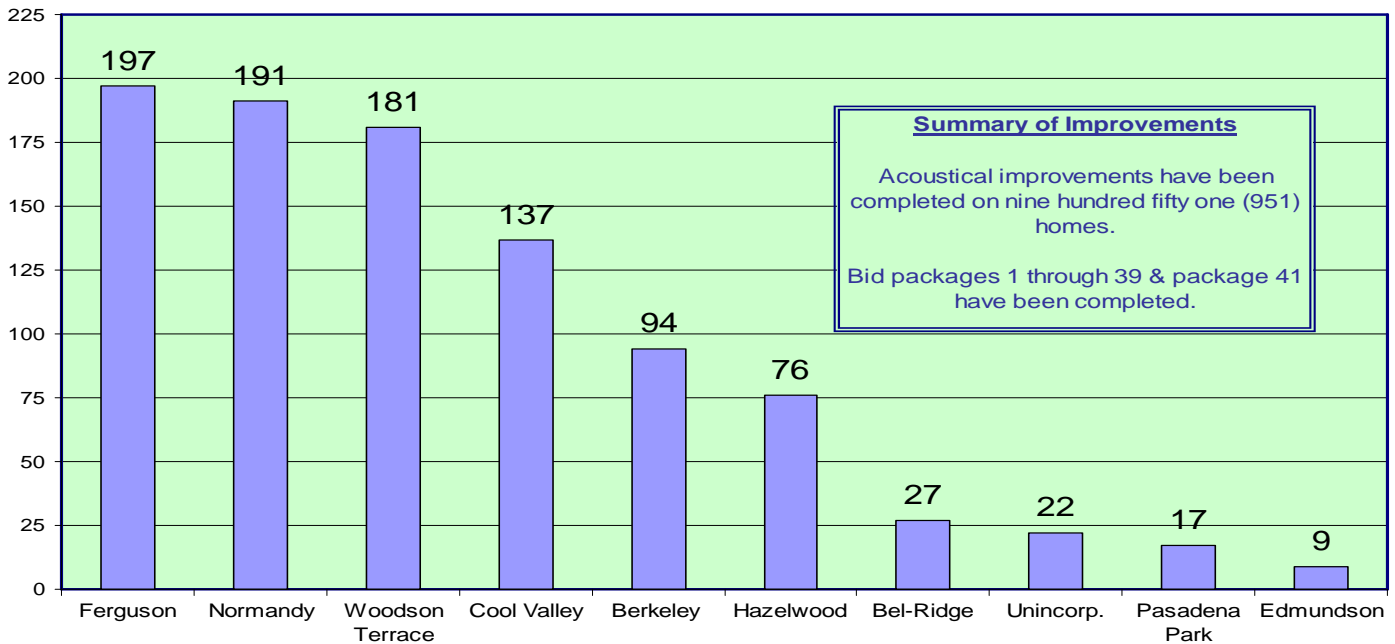
Before



After



**Residential Sound Insulation Program
Number of Homes Completed by Community
As of March 31, 2008**



Summary of Improvements
Acoustical improvements have been completed on nine hundred fifty one (951) homes.
Bid packages 1 through 39 & package 41 have been completed.

City of St. Louis Airport Authority
Lambert-St. Louis International Airport®
Airport Planning & Development Office
11495 Navaid Road, 4th Floor
Bridgeton, MO 63044

*The Public Kiosk is available for viewing during normal business hours.
Call 314.551.5064 For appointment.*

Richard E. Hrabko AAE
Director of Airports
Lambert-St. Louis International Airport®
P. O. Box 10212
St. Louis, MO 63145