



STL AIRPORT LAYOUT PLAN UPDATE

Public Survey #2 Results

This survey was compiled using 820 respondents of which 81% said they are still travelling or plan to travel in 2021 for leisure and 47% said they are still traveling or plan to travel in 2021 for business.

What is the ALP Update?

An Airport Layout Plan Update (ALPU) serves as a critical planning tool that depicts both existing facilities and planned development for an airport. In completing an ALPU, the airport continues to remain eligible for federal grant funds for certain projects.

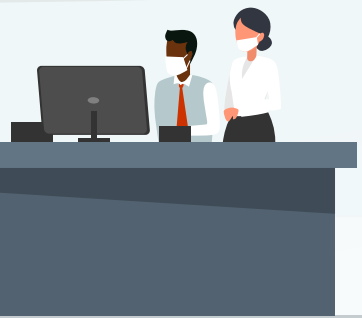
STL's second ALPU Survey was conducted between February 17-March 15, 2021.

Newly designed terminal arrival and departure routes are needed to enhance the first and last experience of the airport.

When selecting where to park, cost and convenience off the highway and to the terminal are most important to me.

I'd love to see more and enhanced dining options as well as more seating at the gates and lots more restrooms in the concourse.

A single terminal would be much easier to navigate...



Terminal Curbside Improvements Identified:

- More drop-off, pick-up temporary parking
- Capacity for vehicles
- Uber/Lyft (TNC) drop-off or pick-up areas
- Signage
- Shuttles zones
- Pedestrian Shelters and Lighting

Preference on Terminals:

- 82% of the respondents commented on the number of terminals, and of those, 52% prefer a single terminal.
- Connection between terminals is preferred if two remain.
- Dropping off and picking up passengers is easier with one terminal

