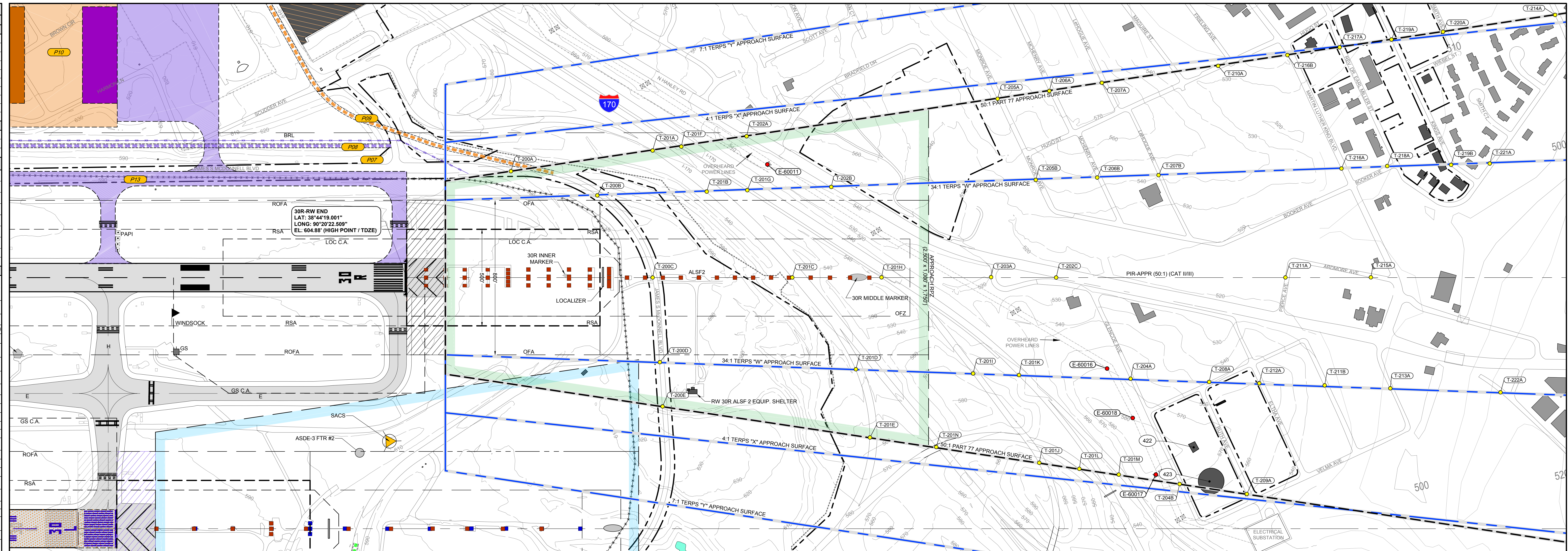


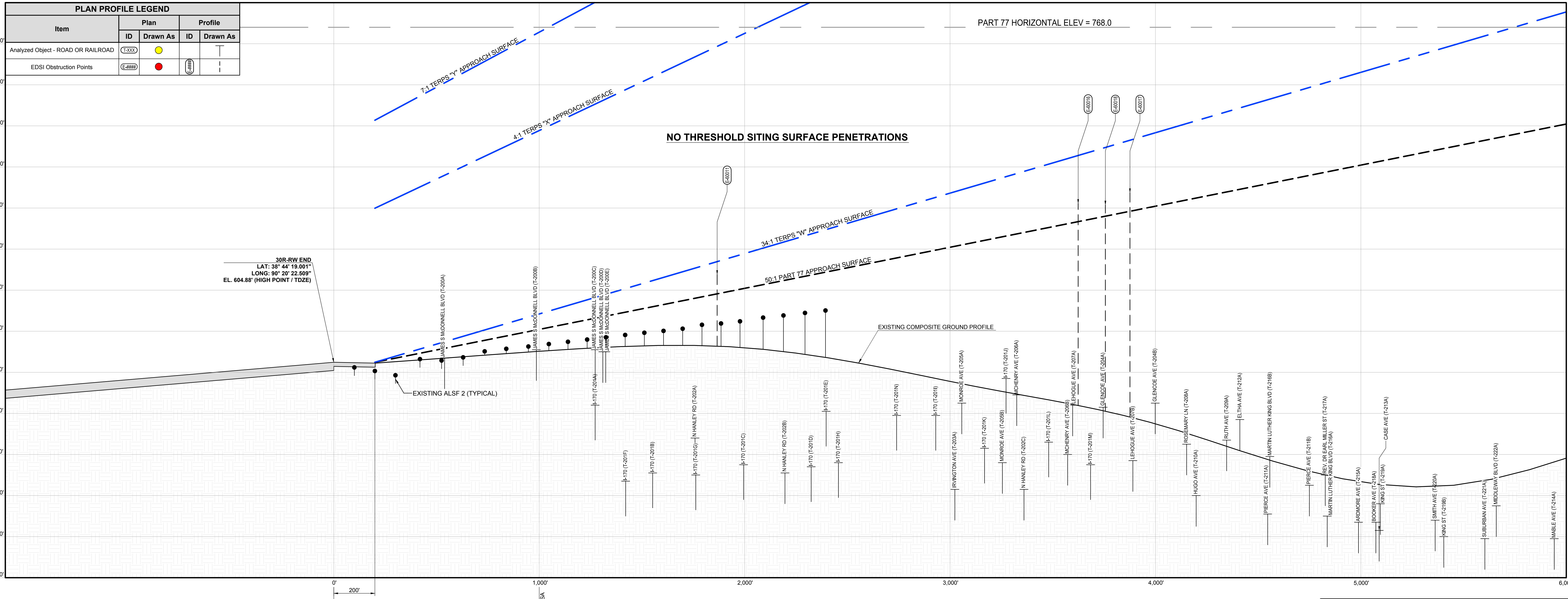
DRAWING LEGEND		DESCRIPTION
EXISTING		
BUILDINGS		
NA	BUILDING - AIRPORT OWNED	
NA	BUILDING - LEASED BY OTHERS	
NA	BUILDING - OWNED BY OTHERS	
NA	QTY AIRPORT	
NA	2013-2017	
NA	2018-2023 (PHASE I)	
NA	2023-2028 (PHASE II)	
NA	2028-ULTIMATE (PHASE III)	
NA	2028-ULTIMATE (PHASE III)	
NA	2028-ULTIMATE (PHASE III)	
NA	DEMO	
PARKING STRUCTURES / LOTS		
NA	AIRPORT - OWNED LOT	
NA	OTHER - OWNED LOT	
NA	AIRPORT GARAGE	
NEW PAVEMENT		
IMPROVED PAVEMENT		
NA	2013-2017	
NA	2018-2023 (PHASE I)	
NA	2023-2028 (PHASE II)	
NA	2028-ULTIMATE (PHASE III)	
DEMO PAVEMENT		
NA	2013-2017	
NA	2018-2023 (PHASE I)	
NA	2023-2028 (PHASE II)	
NA	2028-ULTIMATE (PHASE III)	
OTHER		
APPROACH	APPROACH	RUNWAY PROTECTION ZONE (RPZ)
DEPARTURE	APPROACH	PRECISION INSTRUMENT RUNWAY (PIR)
PIR	APPROACH	RUNWAY SAFETY AREA (RSA)
ROFA	APPROACH	RUNWAY OBJECT FREE AREA (OFA)
ROFA	APPROACH	CENTRAL PORTION OF RPZ
ROFA	APPROACH	RUNWAY VISIBILITY ZONE
ROFA	APPROACH	35' BUILDING RESTRICTION LINE (BRL)
ROFA	APPROACH	AIRPORT REFERENCE POINT (ARP)
ROFA	APPROACH	PACS & SACS
ROFA	APPROACH	MDANG COMPLEX
ROFA	APPROACH	AIRPORT FUEL FARM
ROFA	APPROACH	RENT-A-CAR LOT
ROFA	APPROACH	FENCE
ROFA	APPROACH	AIRPORT PROPERTY LINE
ROFA	APPROACH	GROUND CONTOURS AT 10' INTERVALS
ROFA	APPROACH	CREEK
ROFA	APPROACH	DETENTION BASIN
ROFA	APPROACH	CULVERT
ROFA	APPROACH	LOCALIZER
ROFA	APPROACH	GLIDE SLOPE (GS)
ROFA	APPROACH	PAPI
ROFA	APPROACH	EXTENDED CENTERLINE
ROFA	APPROACH	GATE NUMBER
ROFA	APPROACH	UTILITY TOWER
ROFA	APPROACH	PRECISION OBSTACLE FREE ZONE (POFZ)
ROFA	APPROACH	APPROACH LIGHT SYSTEM



RUNWAY 30R INNER APPROACH (PLAN VIEW)
SCALE: 1" = 200'

Object-ID	Description	Top Elev	Penetration	Surface Name	Location	Action to be Taken
E-60011	2D PT. TRANS. TOWER	647.66	9.45	PT77 INNR APCH_30R	OFAP	OBSTRUCTION LIGHT
E-60016	2D PT. TRANS. TOWER	662.23	8.88	PT77 INNR APCH_30R	OFAP	OBSTRUCTION LIGHT
E-60017	2D PT. TRANS. TOWER	687.51	9.11	PT77 INNR APCH_30R	OFAP	OBSTRUCTION LIGHT
E-60018	2D PT-HIGH WIRE	681.50	5.49	PT77 INNR APCH_30R	OFAP	MARKER BALLS

FUTURE PROJECTS LEGEND		TOP ELEV (MSL)
P07	RELOCATION OF PERIMETER FENCE	
P08	RELOCATION OF ACCESS ROAD	
P09	MCDONNELL BLVD RELOCATION PHASE III	
P10	NE QUADRANT REDEVELOPMENT	
P13	TAXIWAY FOX TROT EXTENSION	



RUNWAY 30R PROFILE VIEW
SCALE: 1" = 20' (VERTICAL)
1" = 200' (HORIZONTAL)

Object-ID	Description	Top Elev	Penetration	Surface Name	Action to be Taken
T-200A	JAMES S MCDONNELL BLVD (N)	607	-4.67	PT77 INNR APCH_30R	
T-200B	JAMES S MCDONNELL BLVD (N)	611	-1.17	TERPS APCH_W_30R	
T-200C	JAMES S MCDONNELL BLVD (N)	611	-15.33	PT77 INNR APCH_30R	
T-200D	JAMES S MCDONNELL BLVD (N)	611	-25.42	TERPS APCH_W_30R	
T-200E	JAMES S MCDONNELL BLVD (N)	610	-21.52	TERPS APCH_W_30R	
T-200F	JAMES S MCDONNELL BLVD (N)	610	-17.36	PT77 INNR APCH_30R	
T-201A	1170 (S)	584	-42.30	PT77 INNR APCH_30R	
T-201B	1170 (S)	551	-80.89	TERPS APCH_W_30R	
T-201C	1170 (S)	555	-85.78	PT77 INNR APCH_30R	
T-201D	1170 (S)	555	-102.67	TERPS APCH_W_30R	
T-201E	1170 (S)	554	-113.35	TERPS APCH_W_30R	
T-201F	1170 (S)	581	-67.82	PT77 INNR APCH_30R	
T-201G	1170 (S)	547	-82.29	PT77 INNR APCH_30R	
T-201H	1170 (S)	550	-100.88	TERPS APCH_W_30R	
T-201I	1170 (S)	556	-84.61	PT77 INNR APCH_30R	
T-201J	1170 (S)	556	-115.25	TERPS APCH_W_30R	
T-201K	1170 (S)	579	-106.18	TERPS APCH_W_30R	
T-201L	1170 (S)	567	-89.33	PT77 INNR APCH_30R	
T-201M	1170 (S)	560	-120.17	TERPS APCH_W_30R	
T-201N	1170 (S)	560	-104.48	PT77 INNR APCH_30R	
T-201O	1170 (S)	555	-119.56	PT77 INNR APCH_30R	
T-201P	1170 (S)	578	-78.68	PT77 INNR APCH_30R	
T-202A	HANLEY RD (N)	568	-89.85	PT77 INNR APCH_30R	
T-202B	HANLEY RD (N)	551	-112.8	TERPS APCH_W_30R	
T-202C	HANLEY RD (N)	543	-125.58	PT77 INNR APCH_30R	
T-202D	HANLEY RD (N)	543	-154.82	TERPS APCH_W_30R	
T-203A	BRUNTON AVE (N)	543	-118.35	PT77 INNR APCH_30R	
T-203B	BRUNTON AVE (N)	543	-144.92	TERPS APCH_W_30R	
T-204A	GLENCOE AVE (N)	583	-126.15	TERPS APCH_W_30R	
T-204B	GLENCOE AVE (N)	585	-95.89	PT77 INNR APCH_30R	
T-205A	MONROE AVE (N)	565	-112.02	PT77 INNR APCH_30R	
T-205B	MONROE AVE (N)	558	-138.73	TERPS APCH_W_30R	
T-206A	MCHERY AVE (N)	589	-78.37	PT77 INNR APCH_30R	
T-206B	MCHERY AVE (N)	560	-140.02	TERPS APCH_W_30R	
T-207A	LENDOLE AVE (N)	584	-88.82	PT77 INNR APCH_30R	
T-207B	LENDOLE AVE (N)	557	-125.41	TERPS APCH_W_30R	
T-208A	ROSEMARY LN (N)	565	-126.1	TERPS APCH_W_30R	
T-208B	RUTH AVE (N)	567	-120.81	PT77 INNR APCH_30R	
T-210A	HODG AVE (N)	540	-144.84	PT77 INNR APCH_30R	
T-211B	FENCE AVE (N)	545	-120.66	TERPS APCH_W_30R	
T-212A	ELTHA AVE (N)	577	-151.73	TERPS APCH_W_30R	
T-213A	CASE AVE (N)	550	-125.99	TERPS APCH_W_30R	
T-214A	MARBLE AVE (N)	519	-200.71	PT77 INNR APCH_30R	
T-215A	ARMSHIRE AVE (N)	527	-173.95	PT77 INNR APCH_30R	
T-215B	ARMSHIRE AVE (N)	527	-217.72	TERPS APCH_W_30R	
T-216A	MARTIN LUTHER KING BLVD (N)	530	-212.72	TERPS APCH_W_30R	
T-216B	MARTIN LUTHER KING BLVD (N)	559	-133.01	PT77 INNR APCH_30R	
T-217A	REYER CARL HILLER (N)	550	-141.47	PT77 INNR APCH_30R	
T-218A	KING ST (N)	536	-160.78	PT77 INNR APCH_30R	
T-218B	KING ST (N)	520	-227.93	TERPS APCH_W_30R	
T-219A	SMITH AVE (N)	528	-180.11	PT77 INNR APCH_30R	
T-221A	SUBURBAN AVE (N)	519	-244.61	TERPS APCH_W_30R	
T-222A	MIDDLEWAY AVE (N)	535	-220.44	TERPS APCH_W_30R	

Note: The Penetration column negative numbers represent a clearance value, positive numbers represent a penetration value.

- NOTES:**
- Horizontal Datum is in a modified Missouri East Zone State Plane Coordinate System (SPCS) known as Lambert International Airport Modified State Plane Coordinate System (LIAMSPCS).
 - All elevations are Above Mean Sea Level (AMSL) relative to the North American Vertical Datum of 1988 (NAVD88).
 - Per FAR Part 77.23(b) the following traverse ways must be increased by: 15' for an (I) Interstate, 17' for an (I) Interstate, and 23' for (B)airroads. Traverse points have not been surveyed they are estimated based on the ALP topography.
 - Obstruction data surveyed by Engineering Design Source, Inc. (EDSI) and Kowelma Engineering, Inc. (KEI) with final data provided by Lambert-St. Louis International Airport.
 - The composite ground profile is a profile comprised of the highest ground elevations within the Part 77 approach surface.
 - Action to be taken (disposition) information was provided by Lambert-St. Louis International Airport.

LAMBERT-ST. LOUIS INTERNATIONAL AIRPORT

INNER PORTION OF THE APPROACH - RUNWAY 30R (CAT II/III)

Drawn by: R.D.J.
Checked by: R.D.J.
Issue Date: JANUARY-2013

F.L.L.

Sheet: **25 OF 37**

Revision	Description	Date	Drawn	Revision	Description	Date	Drawn
	FAA Comments	2/7/2012	R.D.J.				