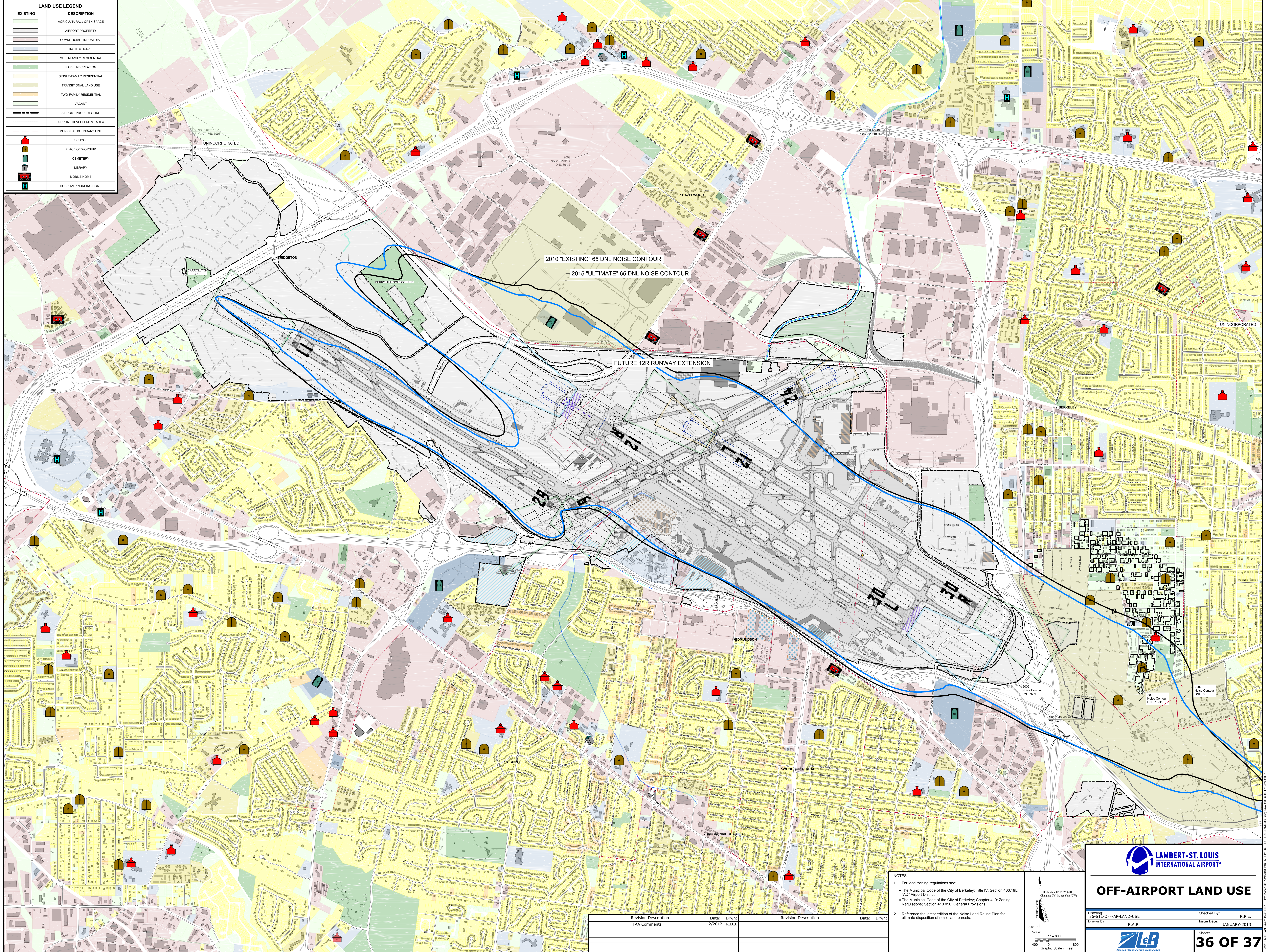


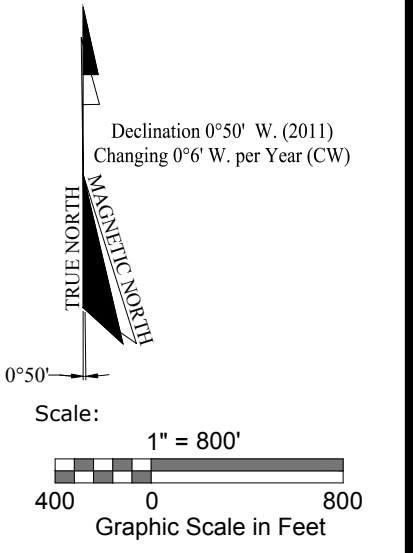
LAND USE LEGEND	
EXISTING	DESCRIPTION
[Symbol]	AGRICULTURAL / OPEN SPACE
[Symbol]	AIRPORT PROPERTY
[Symbol]	COMMERCIAL / INDUSTRIAL
[Symbol]	INSTITUTIONAL
[Symbol]	MULTI-FAMILY RESIDENTIAL
[Symbol]	PARK / RECREATION
[Symbol]	SINGLE-FAMILY RESIDENTIAL
[Symbol]	TRANSITIONAL LAND USE
[Symbol]	TWO-FAMILY RESIDENTIAL
[Symbol]	VACANT
[Symbol]	AIRPORT PROPERTY LINE
[Symbol]	AIRPORT DEVELOPMENT AREA
[Symbol]	MUNICIPAL BOUNDARY LINE
[Symbol]	SCHOOL
[Symbol]	PLACE OF WORSHIP
[Symbol]	CEMETERY
[Symbol]	LIBRARY
[Symbol]	MOBILE HOME
[Symbol]	HOSPITAL / NURSING HOME



Revision Description	Date	Drawn	Revision Description	Date	Drawn
FAA Comments	2/2012	R.D.J.			

NOTES:

- For local zoning regulations see:
 - The Municipal Code of the City of Berkeley; Title IV, Section 400.195; "AD" Airport District;
 - The Municipal Code of the City of Berkeley; Chapter 410; Zoning Regulations; Section 410.050; General Provisions
- Reference the latest edition of the Noise Land Reuse Plan for ultimate disposition of noise land parcels.



LAMBERT-ST. LOUIS INTERNATIONAL AIRPORT

OFF-AIRPORT LAND USE

Drawn by: R.A.R. Issue Date: JANUARY-2013

Checked by: R.P.E.

Sheet: **36 OF 37**