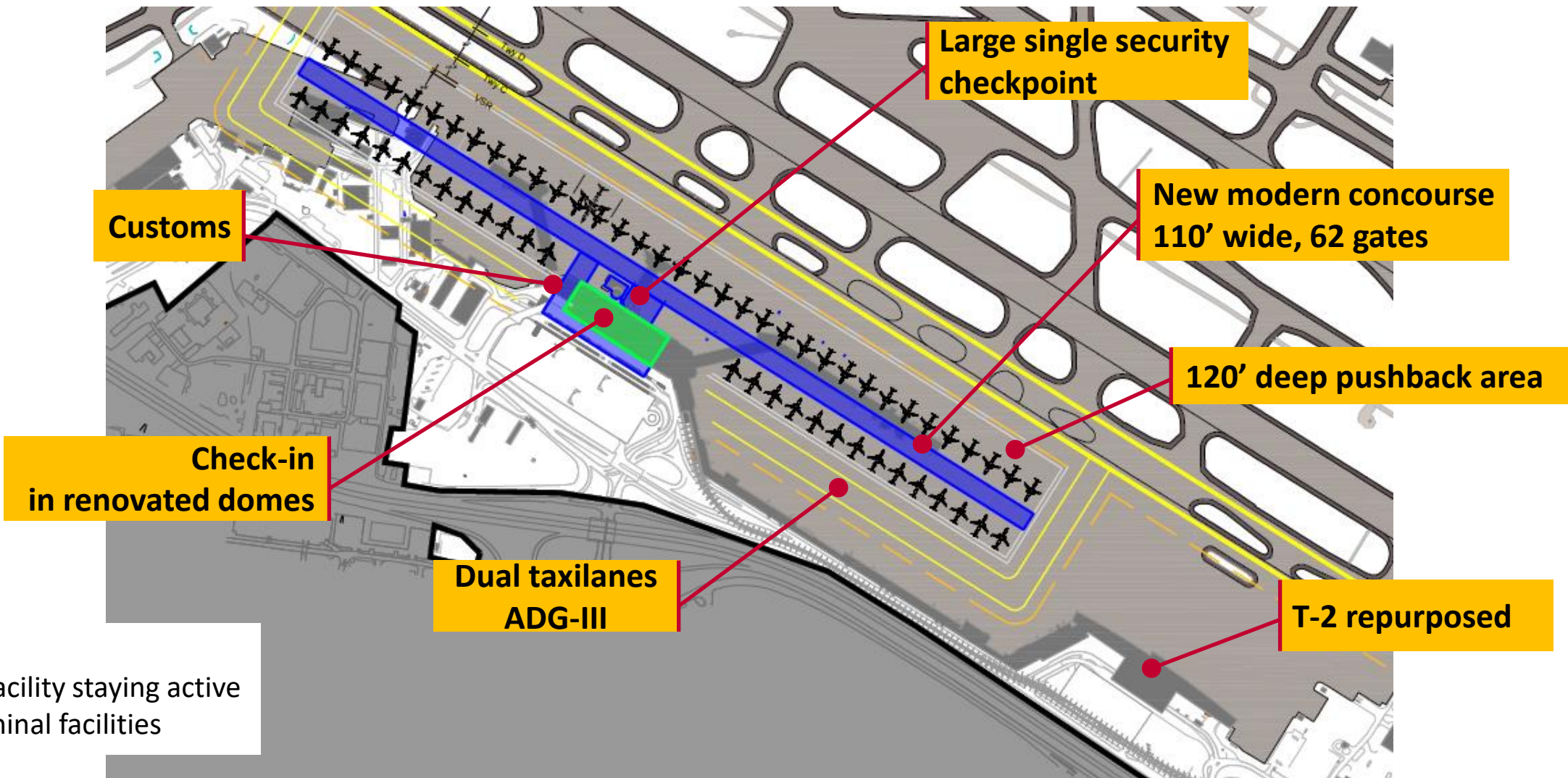




# Preliminary Phasing

St. Louis Lambert International Airport Layout Plan and  
Master Plan

# Preliminary Preferred Terminal Concept



Legend:

Existing facility staying active

New terminal facilities



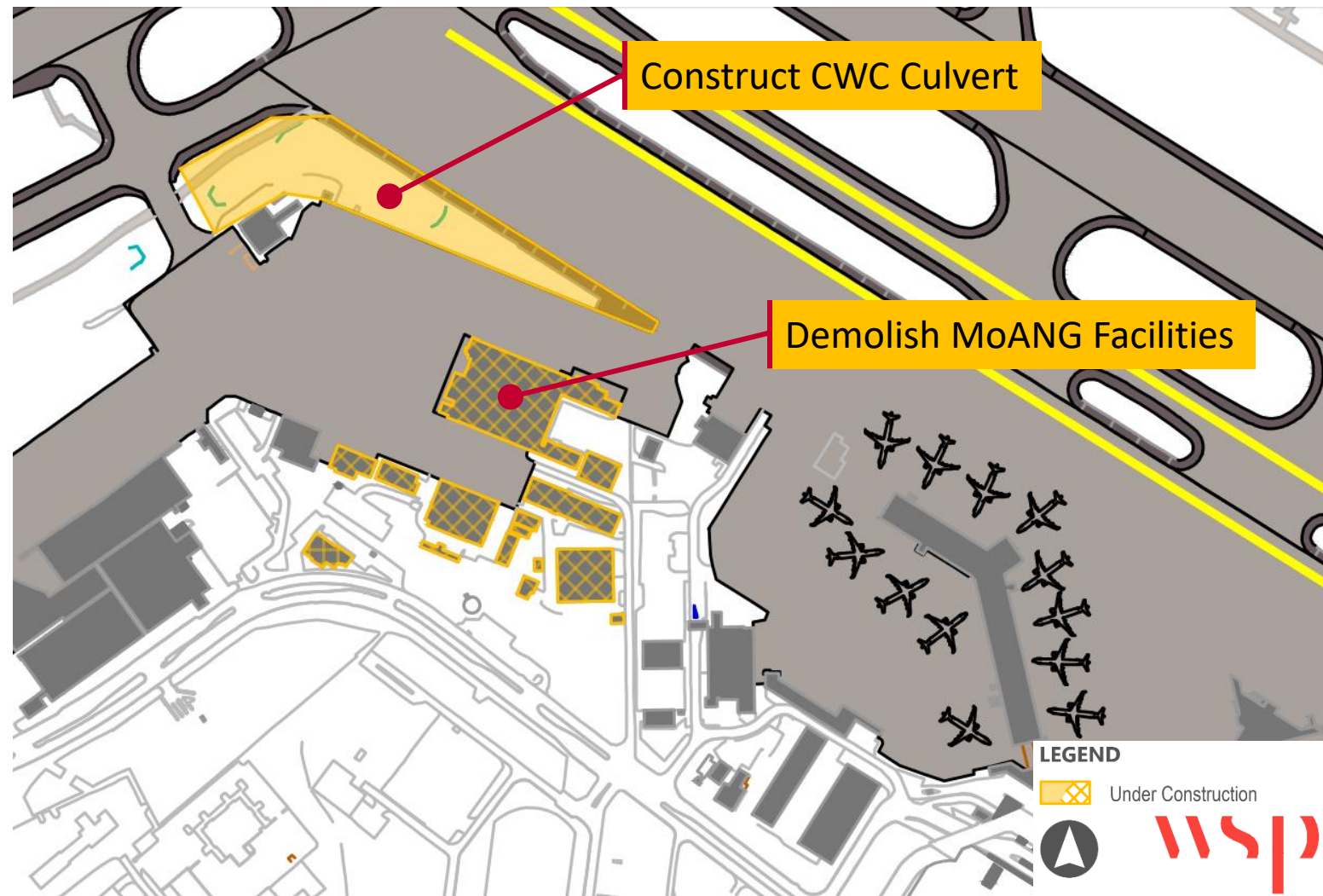
# Preliminary Preferred Terminal Concept



## Phase 0: Enabling Projects (2025-2027)

Once EA and permits are in place:

1. Demolish MoANG campus
2. Construct Coldwater Creek Culvert

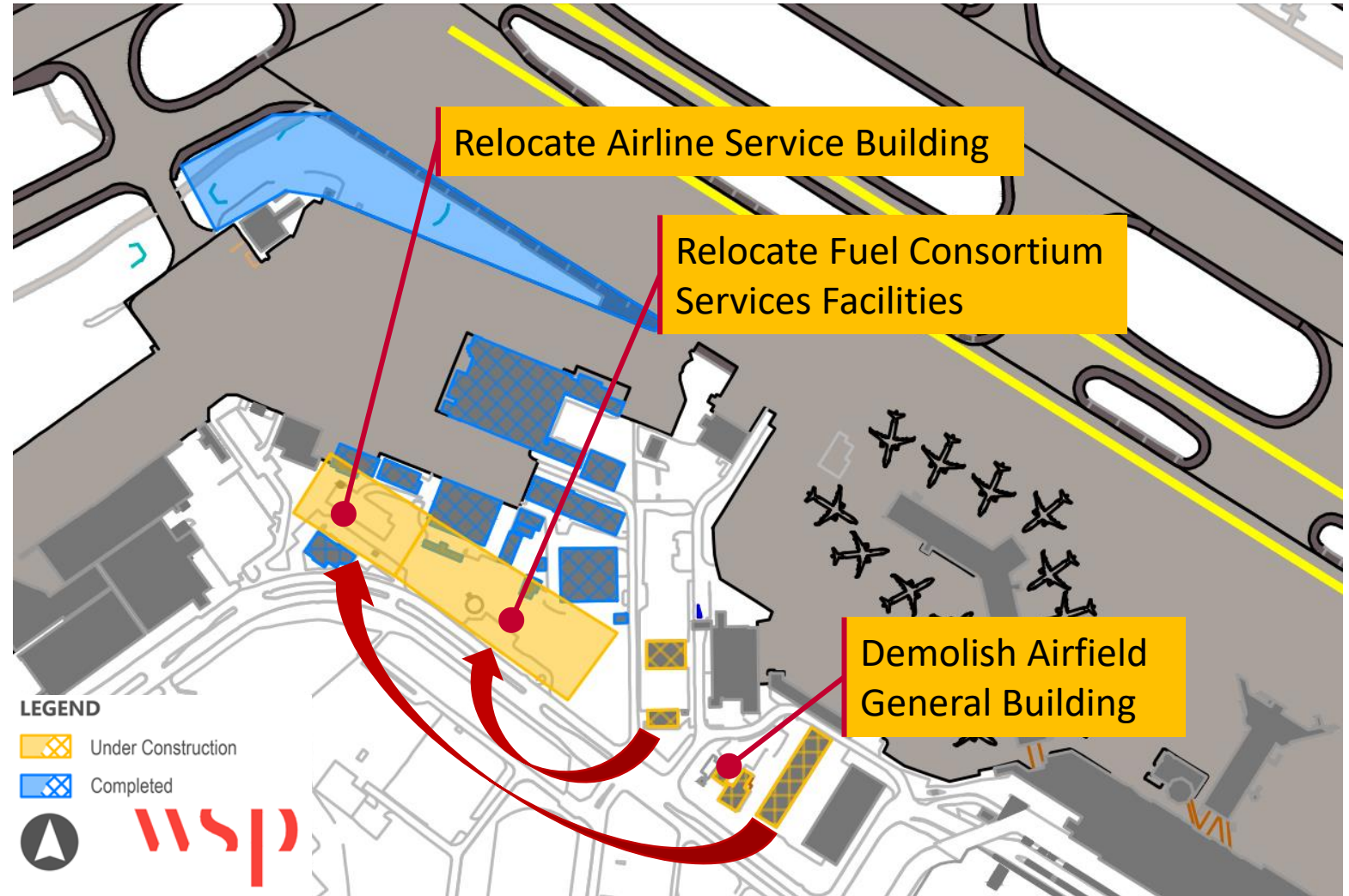


# Preliminary Preferred Terminal Concept

## Phase 0: Enabling Projects (Cont'd)



1. Relocate Fuel Consortium Facilities
2. Relocate Airline Service Building
3. Demolish Airfield General Building

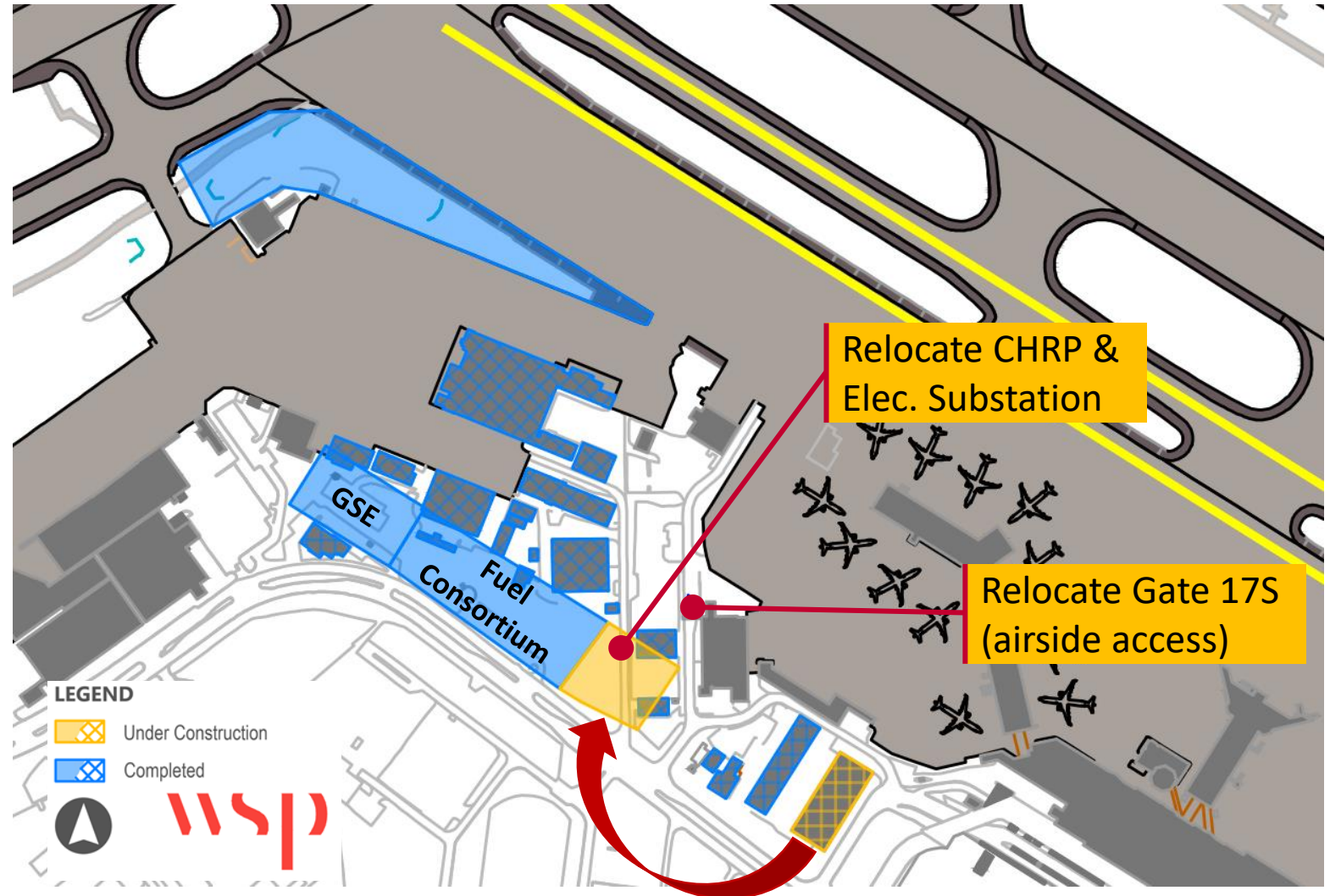


# Preliminary Preferred Terminal Concept

## Phase 0: Enabling Projects (Cont'd)



1. Relocate Central Heating & Refrigeration Plant (CHRP)
2. Relocate electrical substation
3. Relocate Gate 17S (airside access)

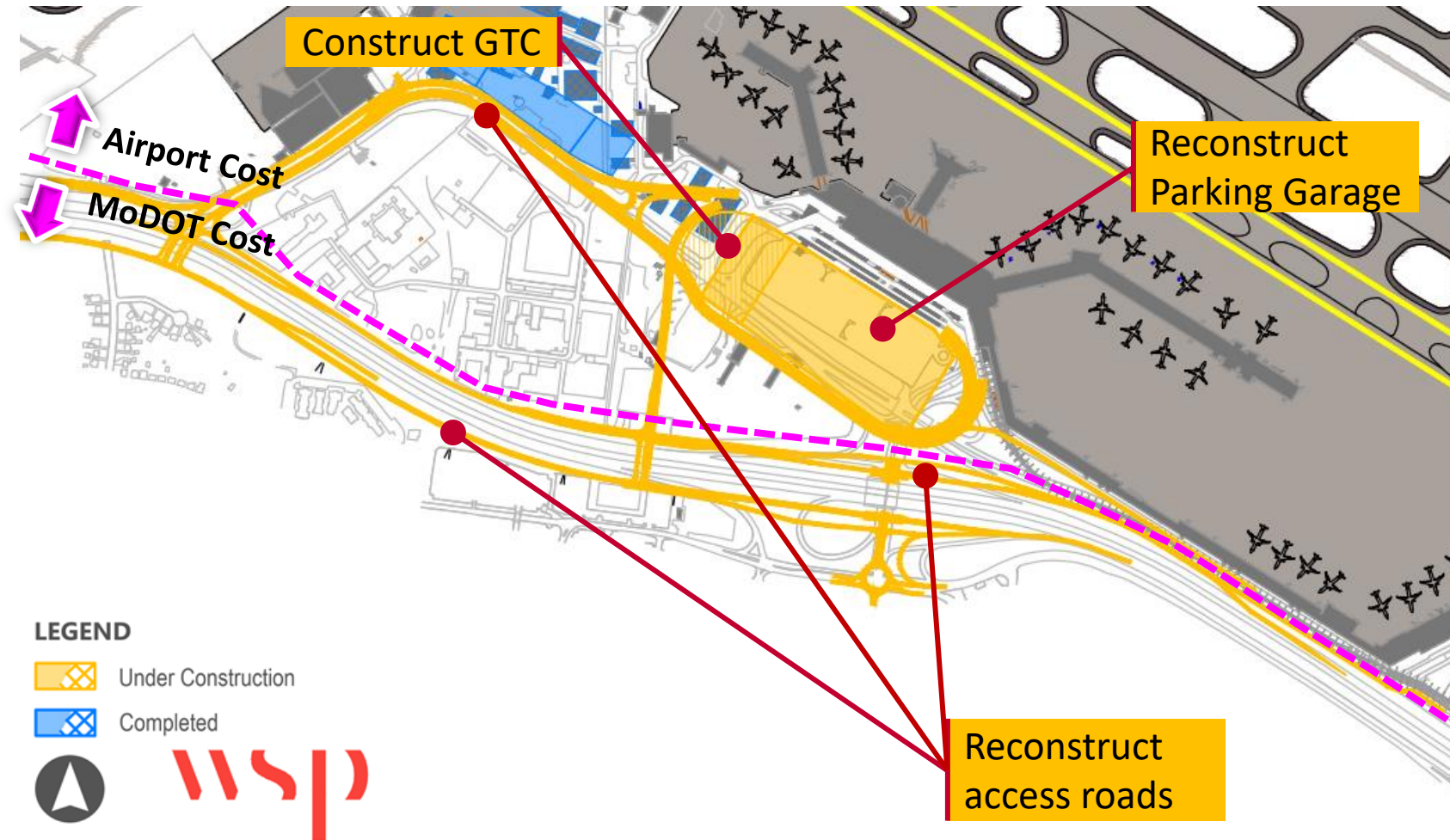


# Preliminary Preferred Terminal Concept



## Phase 1: Construct Garage and Access (2026-2028)

1. Reconstruct access roads, including LIB
2. Reconstruct Parking Garage and construct Ground Transportation Center

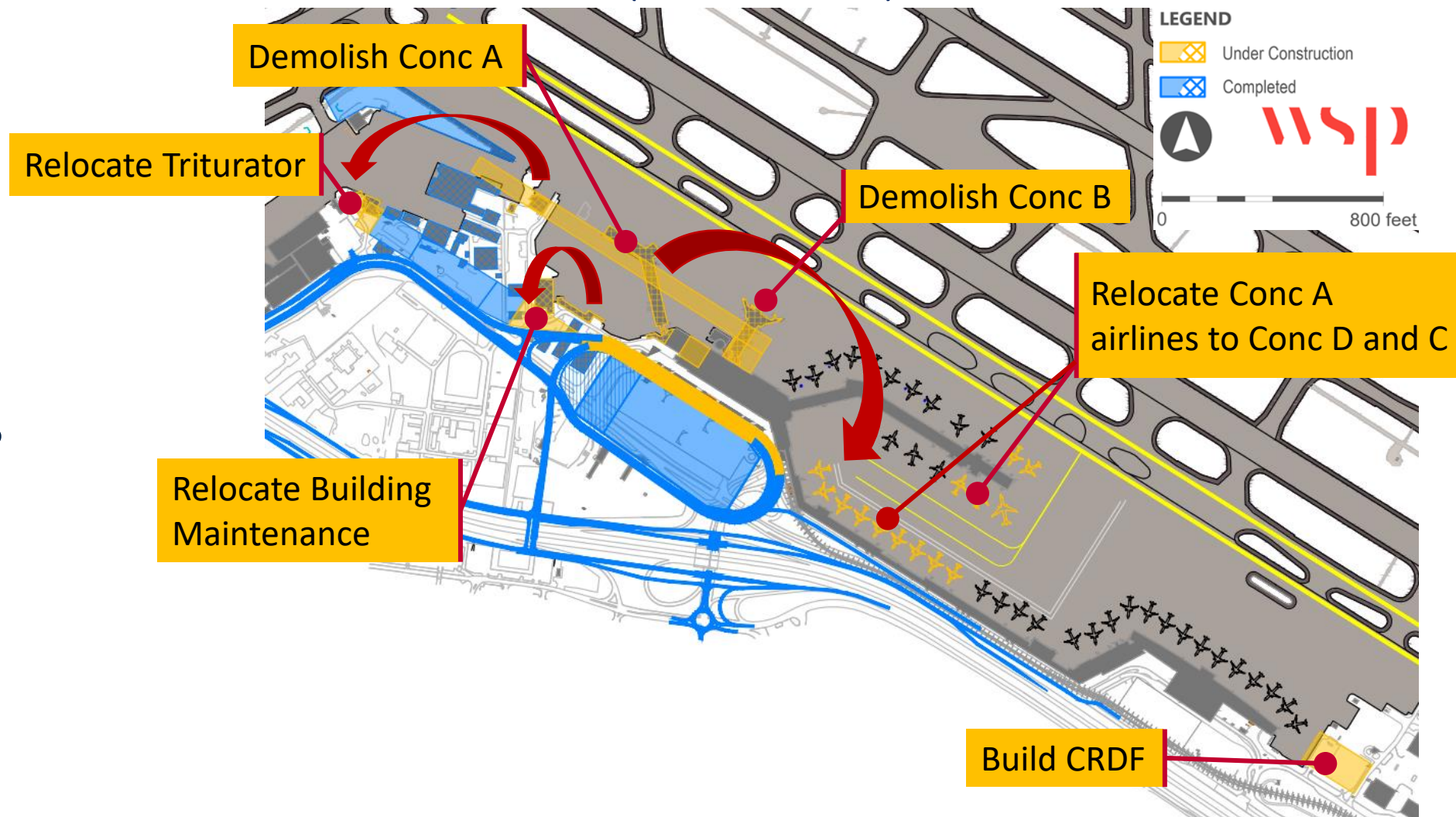


# Preliminary Preferred Terminal Concept

## Phase 2: West Terminal Processor and Concourse (2027-2028)



1. Relocate Triturator
2. Build CRDF
3. Demolish Conc A & B

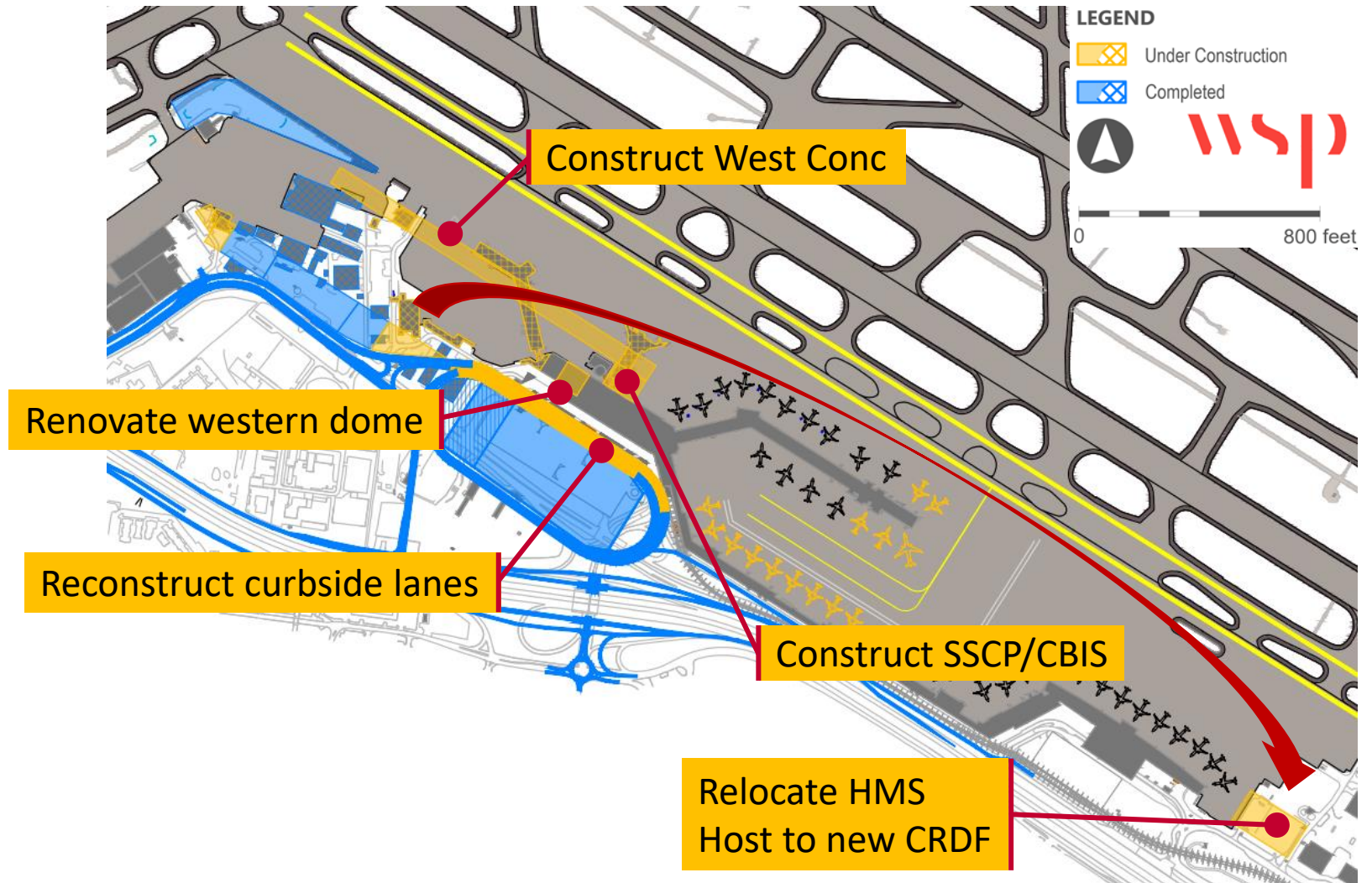


# Preliminary Preferred Terminal Concept

## Phase 2: West Terminal Processor and Concourse (Cont'd)



1. Construct West Linear Conc, SSCP/CBIS and renovate western dome:
2. Reconstruct curbside lanes
3. Relocate HMS Host to new CRDF



# Preliminary Preferred Terminal Concept

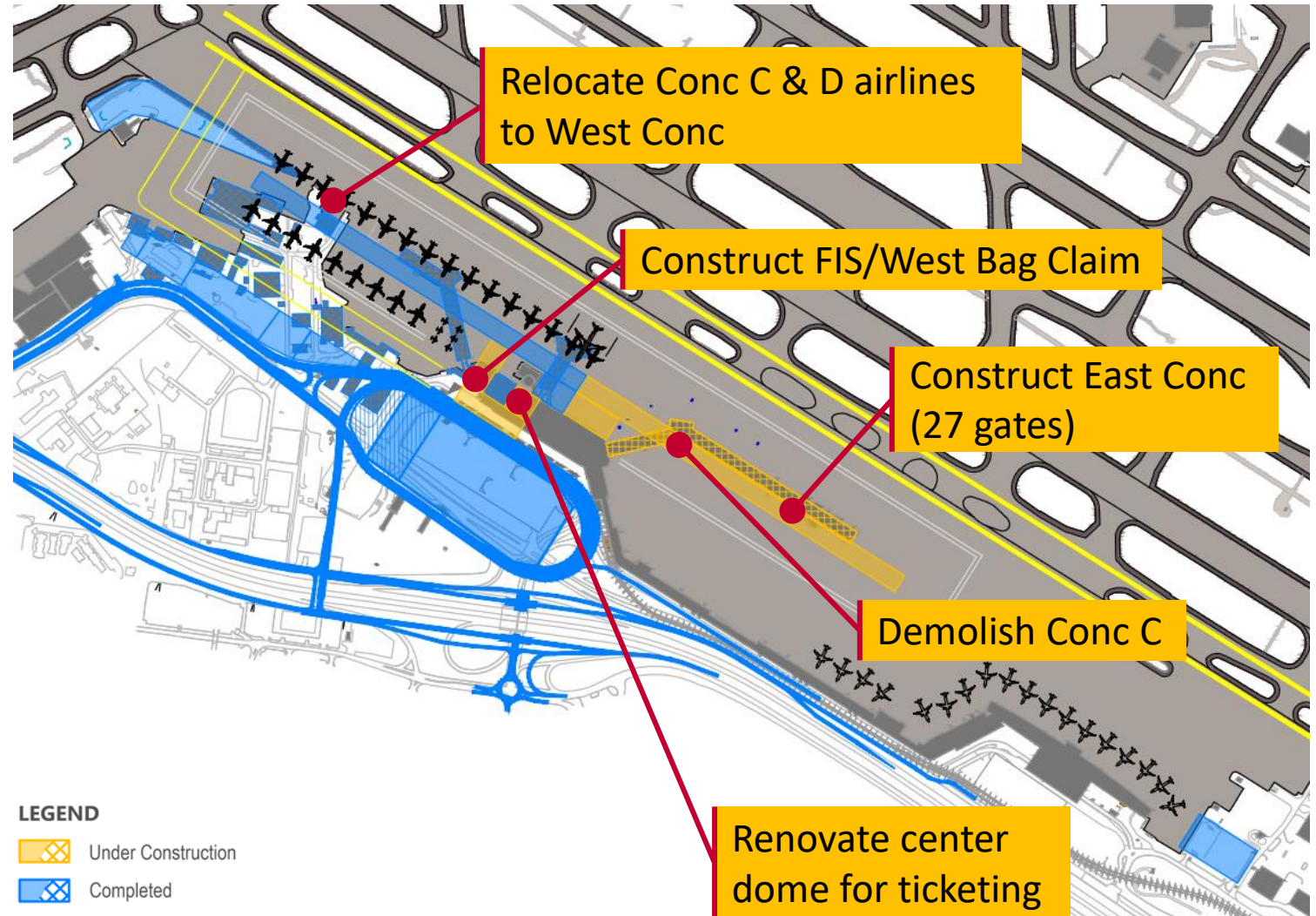
## Phase 3: East Concourse, FIS and Western Half of Baggage Claim (2029-2030)



### 1. Construct:

- East Linear Concourse
- new FIS
- western half of baggage claim

### 2. Renovate/reconfigure center portion of domes for new Ticketing layout

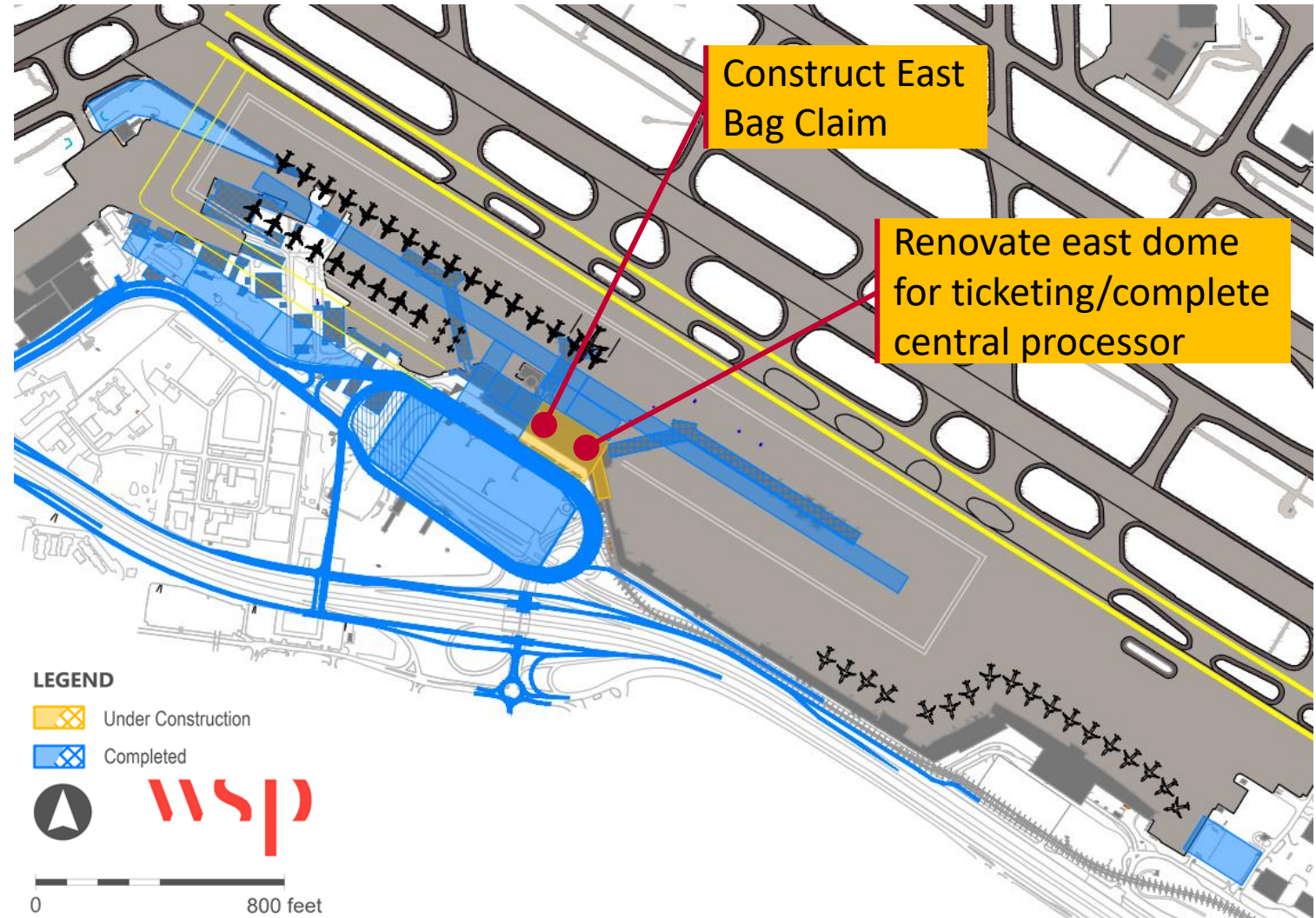


# Preliminary Preferred Terminal Concept

## Phase 4: Eastern Dome and Half of Baggage Claim (2030-2031)



1. Renovate eastern dome for ticketing, complete east central processor (incl. east bag claim)



# Preliminary Preferred Terminal Concept

## Phase 5: T2 Airlines Move into East Concourse



### Program Highlights:

- 62 gates
- 1.4 msf. building space
- ~60% secure-side concessions increase

West Conc  
expansion potential

Relocate T2 airlines  
to East Conc

East Conc  
expansion potential

