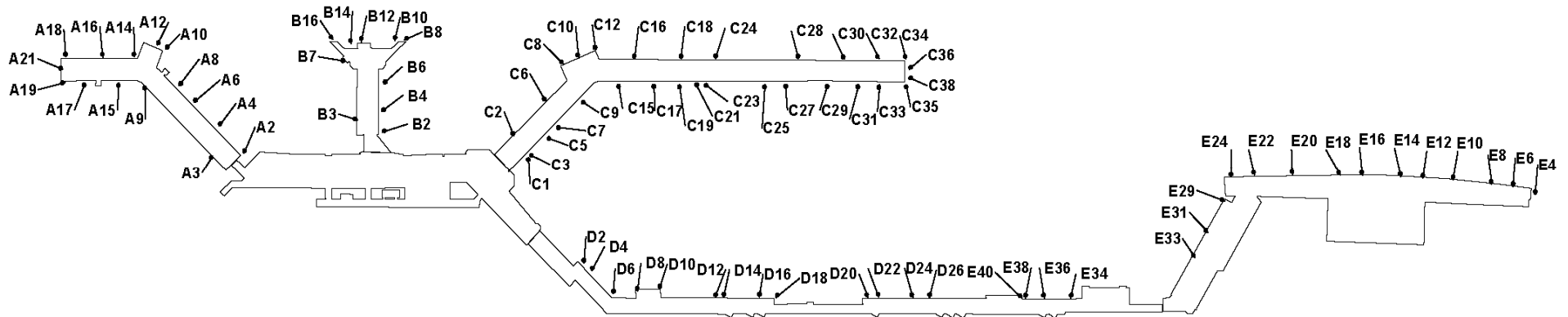


LAMBERT-ST. LOUIS INTERNATIONAL AIRPORT



GATE SUMMARY BY LOCATION

Concourse A		Concourse B		Concourse C		Concourse D		Terminal 2	
Gate	Airline	Gate	Airline	Gate	Airline	Gate	Airline	Gate	Airline
2, 3, 4, 6, 8, 10	Delta	2, 3, 4, 6, 7, 8, 10, 12, 14, 16	Vacant	1	Air Choice One	2, 4, 6, 8, 10, 12, 14, 16, 18, 20, 22, 24, 26	Vacant	4, 6, 8, 10, 12, 14, 16, 18, 20, 22, 24	Southwest
14, 16, 18, 19, 21	United/ Air Canada Jazz			6, 8, 10, 12, 16, 18, 24	American/ US Airways			29, 31*	Int'l/Customs Arrivals
15	City Agent (ATS)/ Charters			5, 7	Cape Air			33, 34, 36, 38, 40	Vacant
12, 17	Vacant - Available for Emerg/Per Turn Use			15	Alaska			*Handled by City Agent (ATS) or STL based airline operating the flight. Southwest also uses E29 on a per turn basis.	
9	Vacant			19, 23	Frontier				
				27, 28	Vacant - Available for Emerg/Per Turn Use				
				2, 3, 9, 17, 21, 25, 29, 30, 31, 32, 33, 34, 35, 36, 38	Vacant				

"A" Gates Total: 15
Leased: 12
Vacant: 3

"B" Gates Total: 10
Leased: 0
Vacant: 10

"C" Gates Total: 30
Leased: 13
Vacant: 17

"D" Gates Total: 13
Leased: 0
Vacant: 13

"E" Gates Total: 18
Leased: 11
Vacant: 7

Total Airport Gates: 86
Total Leased: 36
Total Vacant: 50