

ST. LOUIS LAMBERT INTERNATIONAL AIRPORT
LAMBERT ART AND CULTURE PROGRAM
EXHIBITIONS PROGRAM: REQUEST FOR QUALIFICATIONS
Temporary Exhibitions for 2018-2021

St. Louis Lambert International Airport (“the Airport”) is seeking qualifications from arts, culture, history and science organizations, as well as independent curators and artists in the St. Louis region and surrounding area (within 150 miles of Lambert Airport) interested in curating and producing exhibitions at the Airport. Qualifications will be reviewed by the Airport Art Advisory Committee (AAAC). Selected organizations, curators and artists will be invited to develop a full proposal for one of the exhibition spaces. If selected, exhibitors will be offered a fee to curate, install and de-install the exhibit, and to assist the Airport with related media and communications. Qualifications are due by February 28, 2018.

BACKGROUND

The mission of Lambert Art and Culture Program is to create a visually outstanding impression of St. Louis, generate community pride, and ensure that art at the Airport complements and builds upon the Airport’s rich visual history.

The Art and Culture Program grew out of the Airport’s Experience Program, a \$70 million renovation project (2008) to improve the airport’s operations and pay tribute to the building’s iconic architecture and historic role as a civic space and landmark. In 2010, the Airport created the AAAC. The committee consists of seven highly qualified local arts professionals appointed by the Mayor of St. Louis who oversee the Lambert Art and Culture Program.

To date, the Lambert Art and Culture Program has commissioned ten permanent public art projects. In 2011, nine St. Louis-based visual artists were commissioned to create work that was translated in art glass screens and installed throughout the A and C Concourses. In addition, the AAAC selected Alicia LaChance to translate one of her colorful, graphic paintings into a terrazzo floor medallion that is located just past the Concourse C security checkpoint. These were the first public art commissions at the Airport since the installation of the *Black Americans in Flight* mural created by Spencer Taylor and Solomon Thurman in 1990.

In 2017, the Airport commissioned three temporary public art projects, including two murals in the Terminal 2 Baggage Claim area, created by Ellie Balk and Megan Singleton, and a collaboration with Washington University’s Sam Fox School of Design & Visual Arts Graduate School of Architecture & Urban Design to create *Spectroplexus*, a suspended 100’ installation in the ceiling of the Terminal 2 Ticketing area.

In addition to public art, the Lambert Art and Culture Program has a growing temporary exhibitions program throughout the Airport. The Lambert Gallery East, in Terminal 1 Bag Claim, opened in 2012 and has since featured curated exhibitions from more than 20 local arts and culture institutions. Many additional display areas have been added to the program since 2012, including multiple locations throughout the Airport for showing two-dimensional artwork.

Since it's opening, exhibitions at the Lambert Gallery East and Lambert Gallery West have included:

- *Sky High Tea: A Teapot Exhibition*, curated by Craft Alliance
- *Chess Inspires*, curated by the World Chess Hall of Fame
- *Crowning Glory*, curated by the Griot Museum
- *Paper Trails*, curated by Craft Alliance
- *Rat Race*, curated by the Foundry Art Center
- *Missouri Made*, curated by the Missouri State Museum
- *A Heritage of Cameras*, curated by the International Photography Hall of Fame & Museum
- *3D Fiber Exploration*, curated by Missouri Fiber Artists
- *The Robots Are Coming!*, curated by St. Louis 2004 Exposition / Bill Christman
- *Wonderful Winds: Musical Instruments from The Sheldon's Hartenberger World Music Collection*, curated by the Sheldon Art Gallery
- *Accidental Mysteries: Curious Art and Objects*, curated by John Foster
- *Footsteps on the American Frontier: Daniel Boone and Westward Expansion*, curated by the Historic Daniel Boone Home and Heritage Center
- *Different Filter, Different Lens: Artists First*, curated by Artists First
- *Function & Ceremony: The Art of Melanesia*, curated by The Schmidt Art Center
- *The Aerial Crossroads of America: St. Louis's Lambert Airport*, curated by Missouri History Museum
- *All Shapes and Sizes: Ernest Trova's Legacy at Laumeier Sculpture Park*, curated by Laumeier Sculpture Park
- *Wrapped in Knowledge: African Textiles from St. Louis Collections*, curated by Dr. Jacquelyn Lewis-Harris and Yvonne Osei

The T1 Ticketing Lounge has featured the work of local artists and from local art collections, including:

- Sam Stang
- Michael Bauermeister
- The Philadelphia Wireman
- Daniel Raedeke
- Tom Sleet
- Amy Reidel
- Third Degree Glass Artists
- *Inclusion*, curated by Art Bae

The T1 A Wall has featured:

- Steven and William Ladd
- Robert Ketchens
- Michael Hoffman
- Firecracker Press

The T1 Lower Ramp Light Boxes have featured the following series from local photographers and collections:

- *Processing Place: St. Louis Architecture*, Ken Konchel
- *Traveling Through Time, Photographs from the Collection of the Mercantile Library at UMSL*, curated by the Mercantile Library

The T2 East and West Walls have featured work from local artists and organizations, including:

- Lyndon Barrois, Jr.

- Tate Foley
- Work/Play
- Gallery 210
- Carol Carter
- Photo Flood Saint Louis

The T2 E33-E34 Gate area has featured art from local artists and organizations, including:

- *Mark Making*, curated by Wildwood Press

For more information about Lambert's Art and Culture program, visit www.flystl.com/art

CURRENT EXHIBITION OPPORTUNITY

The Lambert Airport Art and Culture Program is seeking qualifications from eligible organizations, independent curators and artists interested in curating and producing an exhibition. To be eligible you must be within a 150 mile radius of Lambert Airport and have a demonstrated history of successfully curating and producing exhibitions, or if an artist, a successful exhibition history of your own work. Exhibitions of three-dimensional objects can be mounted in the vitrines made available by the Airport. Exhibitions must have an art, architecture or design component, but can also include other content.

From the qualifications submitted, the Airport Art Advisory Committee will select exhibitors to develop specific proposals for one of the Airport's exhibition spaces.

Temporary Exhibition Program Goals

The goals for exhibitions at St. Louis Lambert International Airport are to:

- Provide an amenity for airport users and to celebrate the artistic, creative, cultural, historical and scientific resources of the region.
- Allow airport users to have an in-depth experience with art, artifacts and cultural objects and provide an interesting and pleasant way for them to spend time.
- Help airport users understand the St. Louis region.
- Build a wider, stronger audience for regional arts, culture, historic, nature and science organizations throughout the region.

Exhibitions are distinguished from promotional displays or advertising by their curatorial approach and educational purpose, as opposed to simply announcing or advertising exhibitions, events or organizations in the region.

The Airport's Temporary Exhibition Spaces

The Airport is currently seeking qualifications for eight (8) main exhibition spaces: Lambert Gallery East, Lambert Gallery West, T1 Ticketing Lounge, T1 A Wall, T1 Lower Ramp Light Boxes, T2 East Wall, T2 West Wall, T2 E33-E34 Gate Walls. These highly visible spaces are accessible to the general public. The target audiences include airline customers, as well as visitors dropping off and picking up customers.

1. *Lambert Gallery East*. This is a dedicated exhibition space located at the passenger pick-up waiting area in the Airport's Terminal 1 near the exit from Concourse C. The space has six vitrines for the exhibition of three-dimensional objects. Exhibition periods are generally six months with a \$3,500 curatorial fee. We are seeking new exhibitions for November 2018 to November 2020.

2. *Lambert Gallery West.* Adjacent to the Lambert Gallery East, the Airport has the ability to display two-dimensional, framed works on non-enclosed permanent and temporary display walls. Exhibitions are generally for a 6-month period with a \$3,500 curatorial fee. We are seeking new exhibitions for November 2019 to November 2021.
3. *T1 Ticketing Lounge.* The Lounge is in the Terminal 1 ticketing hall. The Lounge includes a green-wall and water-wall features, comfortable furniture, the sculpture *China China* by Zhu Wei on loan by the Gateway Foundation, and two-large-scale vitrines for the exhibition of three-dimensional objects. Exhibitions are generally for a 6- to 9-month period with a \$500 curatorial fee. We are seeking new exhibitions for October 2018 to October 2020.
4. *T1 A Wall.* The A Wall is located in the Terminal 1 baggage claim/arrivals area and directly faces the exit from Concourse A. The space has the ability to show two-dimensional, framed work. Exhibitions are generally for a 6-month period with a \$500 curatorial fee. We are seeking new exhibitions for October 2018 to October 2020.
5. *T1 Lower Ramp Light Boxes.* The T1 Light Boxes are located in three passageways throughout the Terminal 1 baggage claim/arrivals area. There are six individual glass cabinet windows lit from behind with strong LED lighting. High resolution digital versions of artwork or photographs are usually reproduced on adhesive vinyl and adhered to the glass cabinet windows. Lighting comes through artwork in varying degrees based on color/opacity. Exhibitions are generally for a 1-year period with a \$2500 curatorial fee for all six Light Boxes. The Airport will be responsible for printing and installation. We are seeking new exhibitions for September 2018 to September 2021.
6. *T2 Concourse East Wall or West Wall.* These two walls are located throughout the T2 Concourse. Both are able to show two-dimensional, framed work and will be programmed separately. Exhibitions are generally for a 6-month period with a \$500 curatorial fee for each wall. We are seeking new exhibitions in each space for November 2018 to November 2020.
7. *T2 Concourse E33-E34 Walls.* The newly renovated and reopened E Gate area has up to seven wall sections available for display. Each of the wall sections are able to show two-dimensional, framed work and can be programmed individually or as groups of 2-5. Exhibitions are generally for a 12-month period with a \$1000 curatorial fee for each wall section. We are seeking new exhibitions for November 2018 to November 2021.

Specifications on the eight current exhibition spaces are in the Appendices. We will work with the selected exhibitors to determine an exhibition timeframe and location as part of the process of developing a full exhibition proposal. Other areas in Terminals 1 and 2 may open up for exhibitions in 2018-2021. If new spaces become available, you may be considered for an alternative location.

Exhibitor and Lambert Responsibilities

If selected, exhibitors will be responsible for the following:

- Develop a concept and design for the exhibition and select individual objects to be exhibited.
- Manage all aspects of coordinating with any outside lenders whose objects are chosen for display.
- Transport all of the objects to the Airport.
- Install the exhibition and provide tools and hardware as needed (excludes T1 Lower Ramp Light Boxes).
- Insure the exhibition items in transit both to and from the Airport.
- Provide an itemized list and photographs of objects in the exhibit, including replacement cost, for approval and insurance purposes.
- De-install the objects, including the packing and removing of the works and the return of the works.

- Provide information for object labels.
- Promote the exhibition through the organization, curator or artist’s regular communications, i.e.: mailings, newsletters, email blasts, and social media.
- Provide materials to the Airport to assist with the Airport’s promotion of the exhibition and related event(s).
- Collaborate with the City of St. Louis and the Airport on media.
- Provide a certificate evidencing general liability insurance in the amount of \$1,000,000.00. The certificate must name The City of St. Louis, Missouri, its Board of Alderman, Airport Commission, officers, employees, and agents as additional insured (assistance available).
- Must provide a W9 to the City of St. Louis to set up payment account.
- May have to set up account with City of St. Louis Earnings Tax Account in order to receive payment for exhibition.
- May have to have a current City of St. Louis business license in order to receive payment for exhibition (for payments over \$1000).

Exhibitors may also be asked to:

- Design and provide digital files and printing specifications for exhibition signage (Lambert Gallery East and Lambert Gallery West only).
- Design and print descriptive materials (brochure, postcard) for the exhibition and provide up to 500 copies to Lambert Airport to keep stocked in the Gallery (Lambert Gallery East and Lambert Gallery West only).

The Airport will be responsible for the following:

- Provide installation and de-installation assistance, as needed (i.e.: moving vitrines and lifting the plexi tops; provision of ladders, dollies, etc.)
- Insure the exhibition items based on wholesale value while they are installed and on display at the Airport.
- Print and install exhibition signage.
- Design and print object labels.
- Collaborate with the exhibitor on media.
- Promote the exhibition and related event(s) through the Airport’s email and social media communications.
- Notify Airport Police Department and security officials of exhibit.
- Keep print materials/brochures stocked (Lambert Gallery East and West only).
- Keep exhibition areas clean.
- Clean exterior of vitrines as needed.

Curatorial Fees

Exhibitors will be offered a fee ranging from \$500 to \$3500, based on the location of the exhibit which directly effects the scope of the exhibition and the responsibilities of the exhibitor. See fees outlined by specific Temporary Exhibition Spaces above.

Timeline

February 9, 2018	Deadline to submit all questions
February 16, 2018	Responses to all questions posted
February 28, 2018	Qualifications due
March 2018	Qualifications Reviewed by AAAC Exhibitors selected
April 2018	Exhibitors scheduled and locations determined
September 2018-November 2021	Exhibitions occur, beginning dates and length of exhibitions vary based on location

TO SUBMIT QUALIFICATIONS

Interested organizations, curators and artists should submit qualifications by February 28, 2018 that includes the following:

1. Exhibitor Profile (limit 2 pages)
 - a. Name of organization, independent curator or artist
 - b. Primary contact person
 - c. Phone, email and other contact information
 - d. Description of organization or bio and resume / cv for independent curator or artist
2. Collection Overview / Exhibition Capabilities (limit 3 pages)
 - a. Description of elements of your collection that you would be interested in organizing into an exhibition, and/or
 - b. Types of works that you have access to (through loans, collaborations, or other means) that would be the basis of an exhibition.
3. Up to five images, saved in a single compressed pdf file with captions explaining works shown, size and materials.
4. The exhibition spaces you would be willing to be considered for. Please reference 1) Lambert Gallery East, 2) Lambert Gallery West, 3) T1 Ticketing Lounge, 4.) T1 A Wall, 5.) T1 Lower Ramp Light Boxes, 6.) T2 Concourse East or West Wall, 7) T2 Concourse E33-E34 Gate Walls (all descriptions on pages 3 & 4)

Questions

Please submit all questions via email to Jeff Lea, Lambert Public Relations, jrlea@flystl.com no later than February 9, 2018. Responses to all questions will be posted on www.flystl.com/art by February 16, 2018.

Review Process

Qualifications will be reviewed by the Airport Art Advisory Committee and a recommendation will be made to the Airport Director. Selected exhibitors will develop a full exhibition proposal, to be approved by the Airport Director. Once approved, Lambert will prepare a letter of agreement outlining responsibilities for both the exhibitor and Lambert Airport. Exhibitors will coordinate with Lambert Airport personnel beginning several months prior to the exhibit.

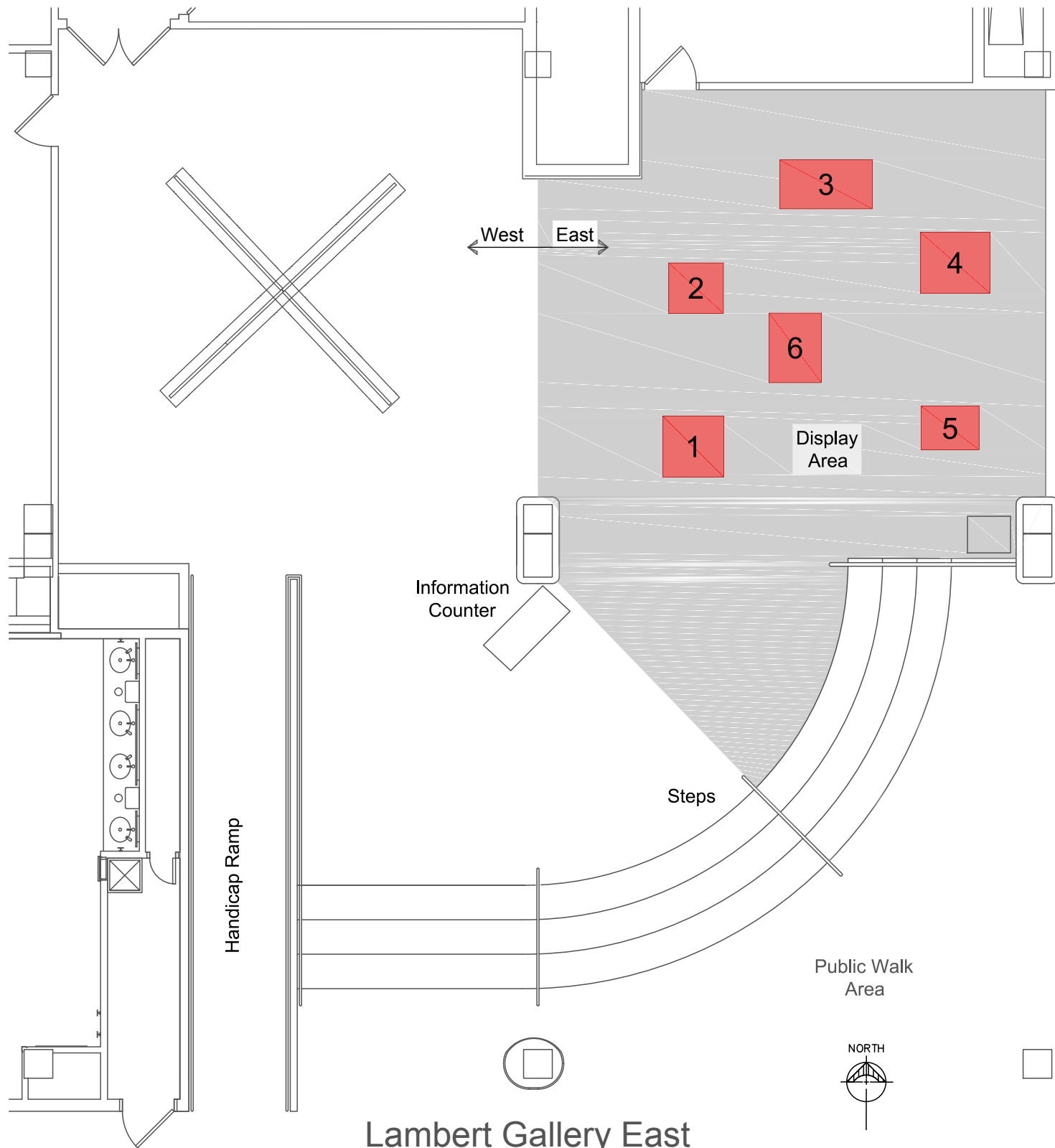
Submit Proposals by February 28, 2018 to:

Email is preferred: jrlea@flystl.com
subject: Airport Exhibitions RFQ

or

Mail (send two copies)
Jeff Lea, St. Louis Lambert International Airport Public Relations
PO Box 10212
St. Louis, MO 63145

For submission issues, contact Jeff Lea at 314-426-8125 or jrlea@flystl.com.

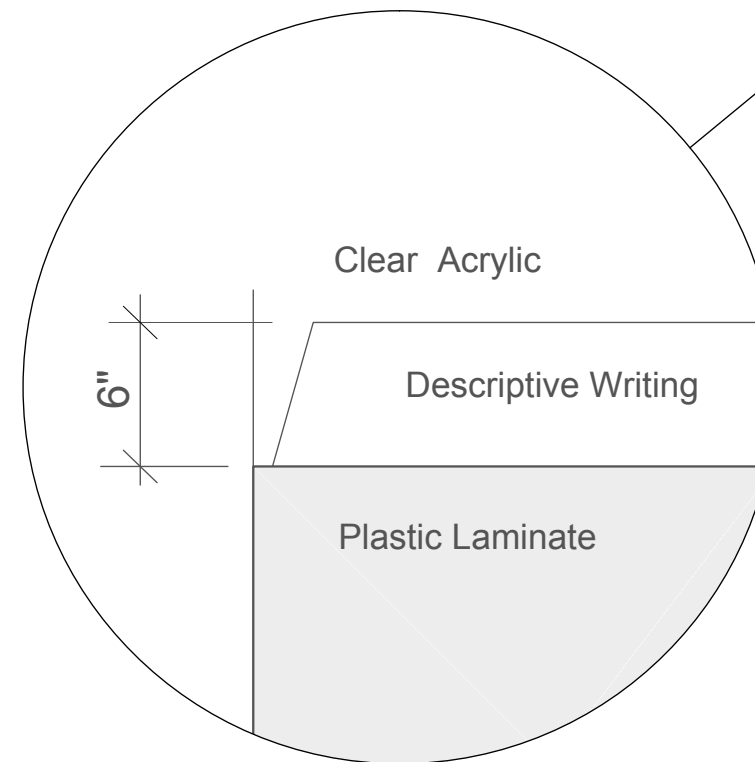


Lambert Gallery East

1/8" = 1' - 0" Terminal 1 - Baggage Claim Level

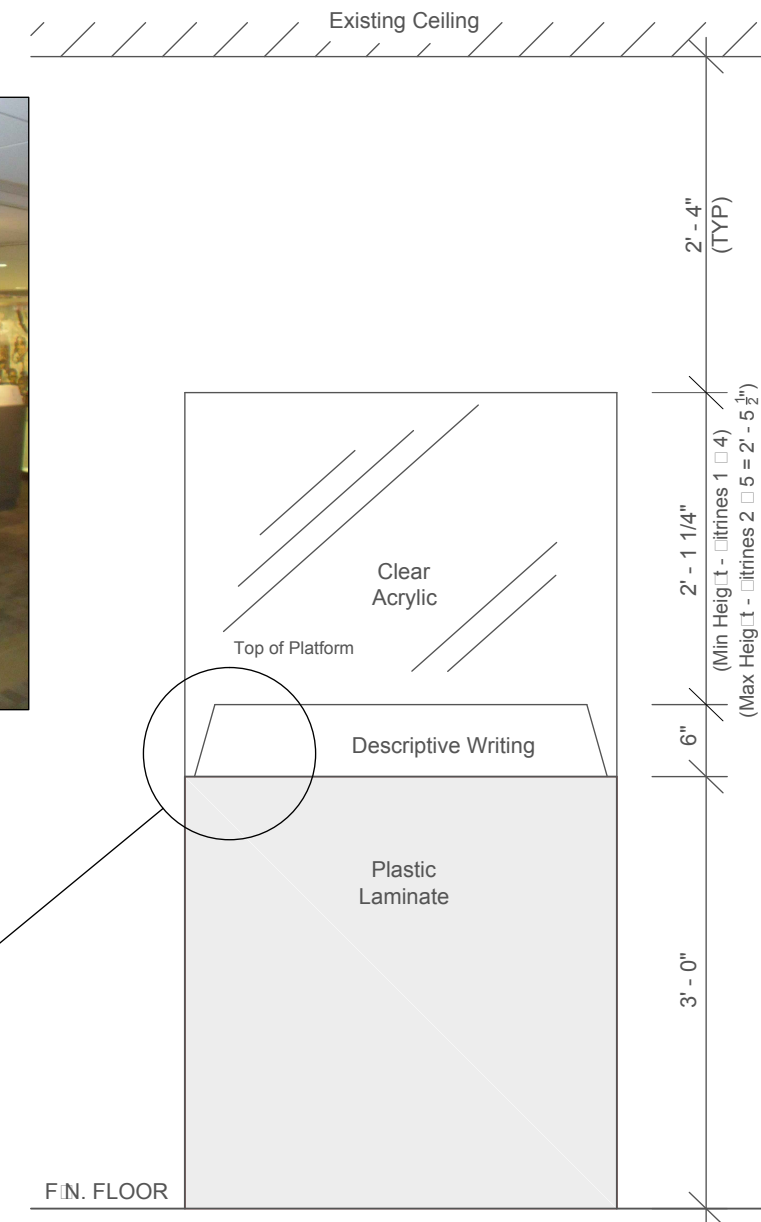


Pictorial of Display Case



Corner Detail

1 1/2" = 1' - 0"

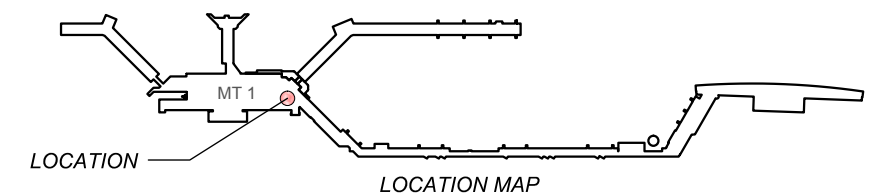


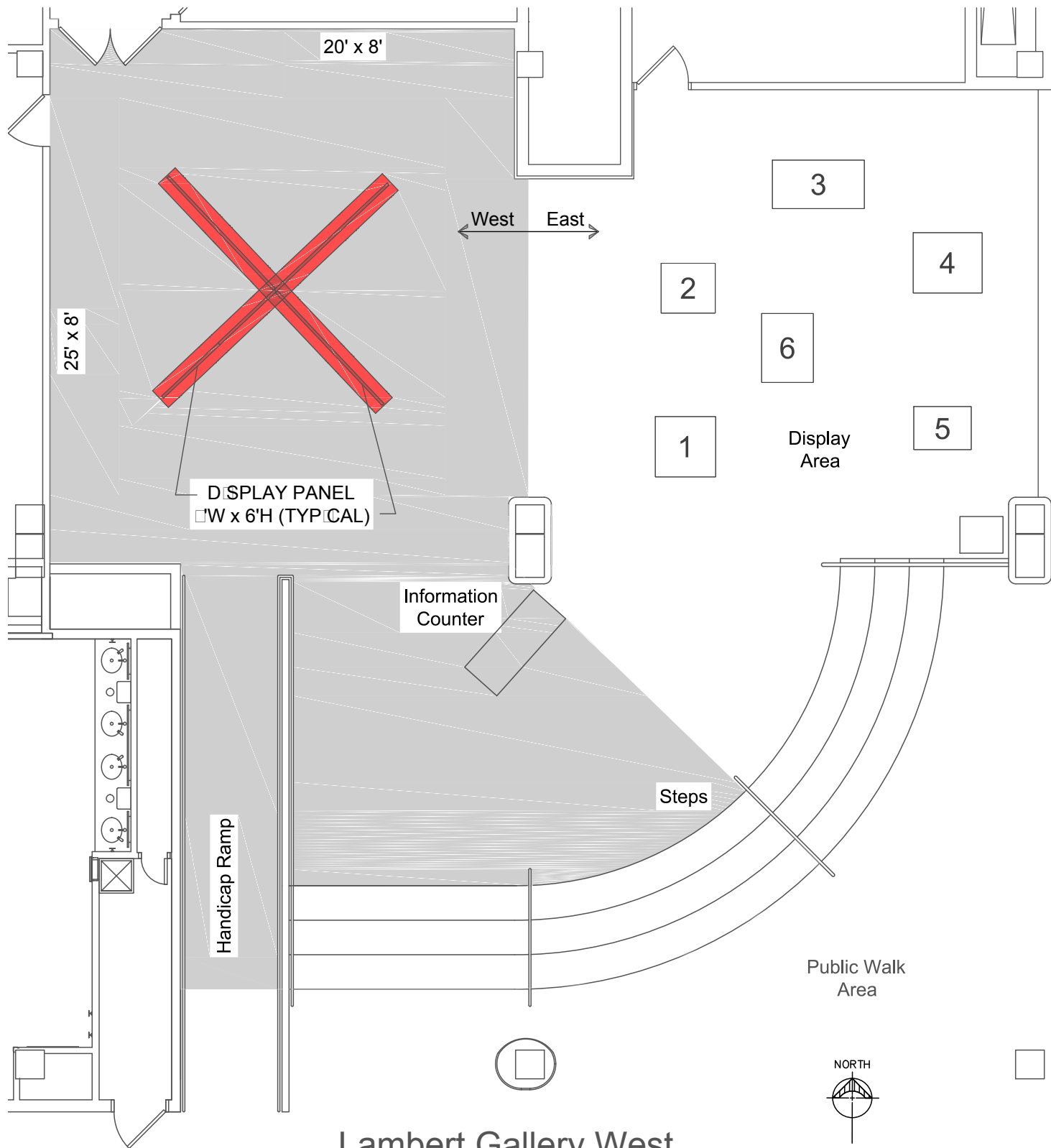
Typical Elevation of Display

3/4" = 1' - 0"

Legend

Citrine	Display Deck Width	Display Deck Depth	Citrine Height
1	36.5"	36.5"	25.25"
2	34.75"	34 7/8"	21.5"
3	58.5"	28.5"	26.75"
4	42.5"	36.5"	25.25"
5	24 5/8"	24.75"	21.25"
6	20.75"	42.75"	27 5/8"



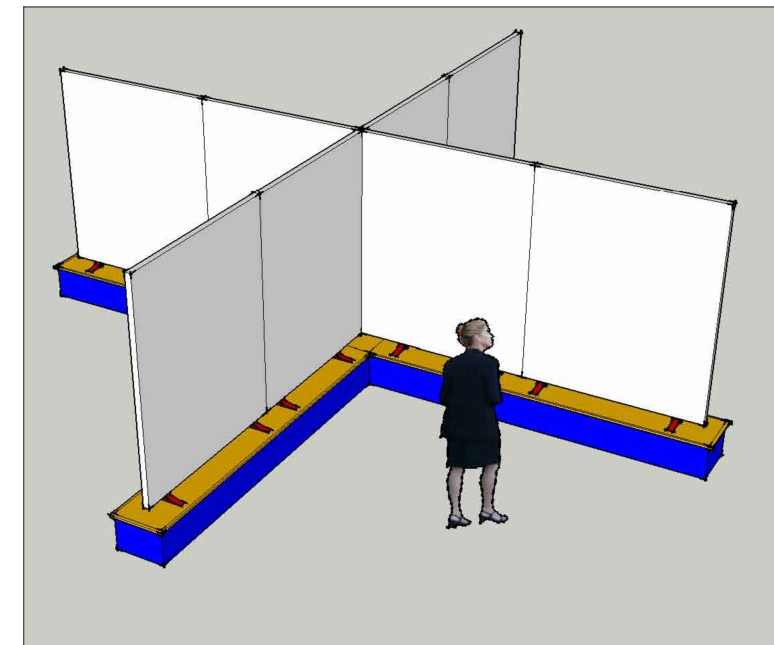


Lambert Gallery West

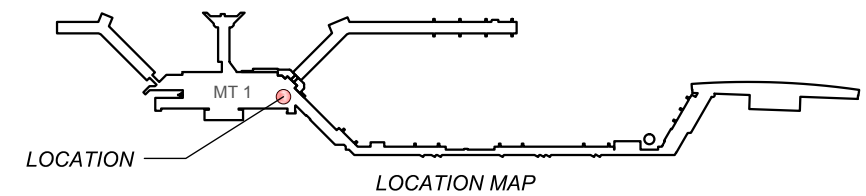
1/8" = 1' - 0" Terminal 1 - Baggage Claim Level

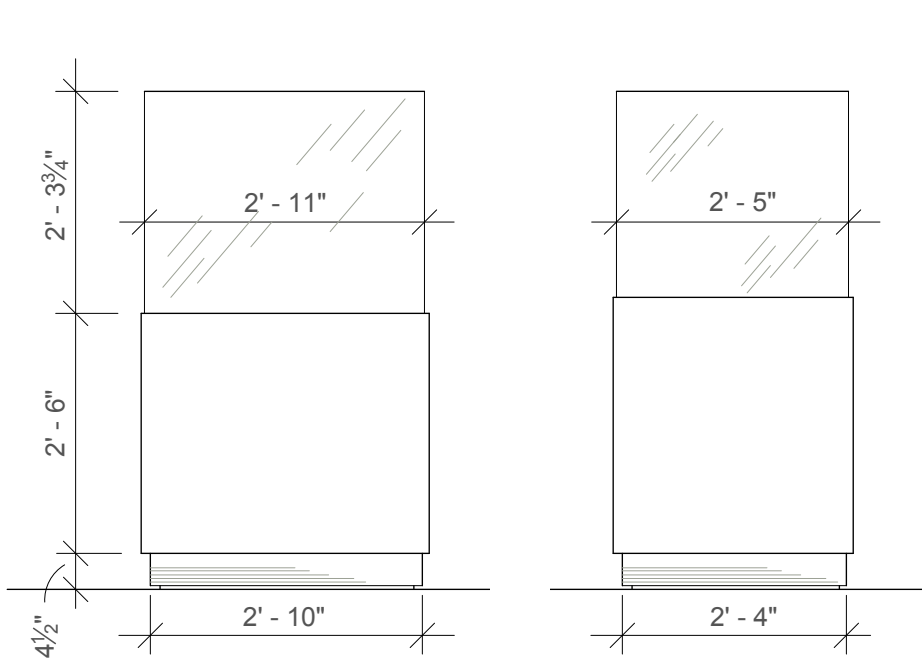


Pictorial of Display Area



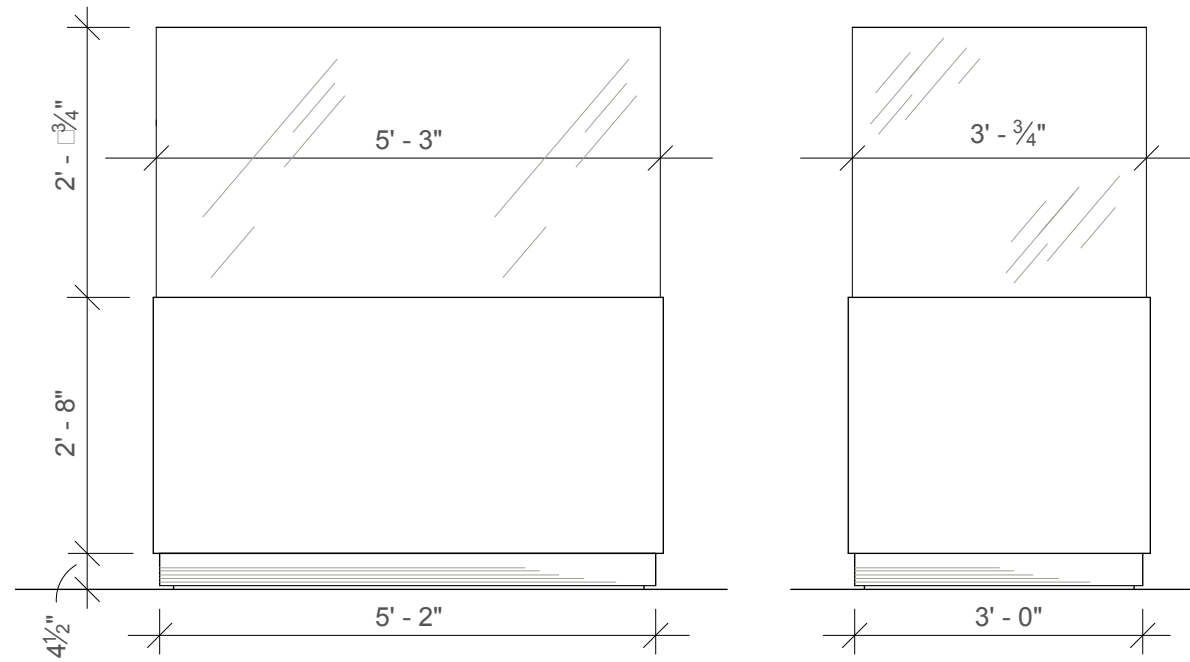
Freestanding Display Panels





Front & Side View of Display Case One

Terminal 1 - Ticketing Level
1/2" - 1'-0"



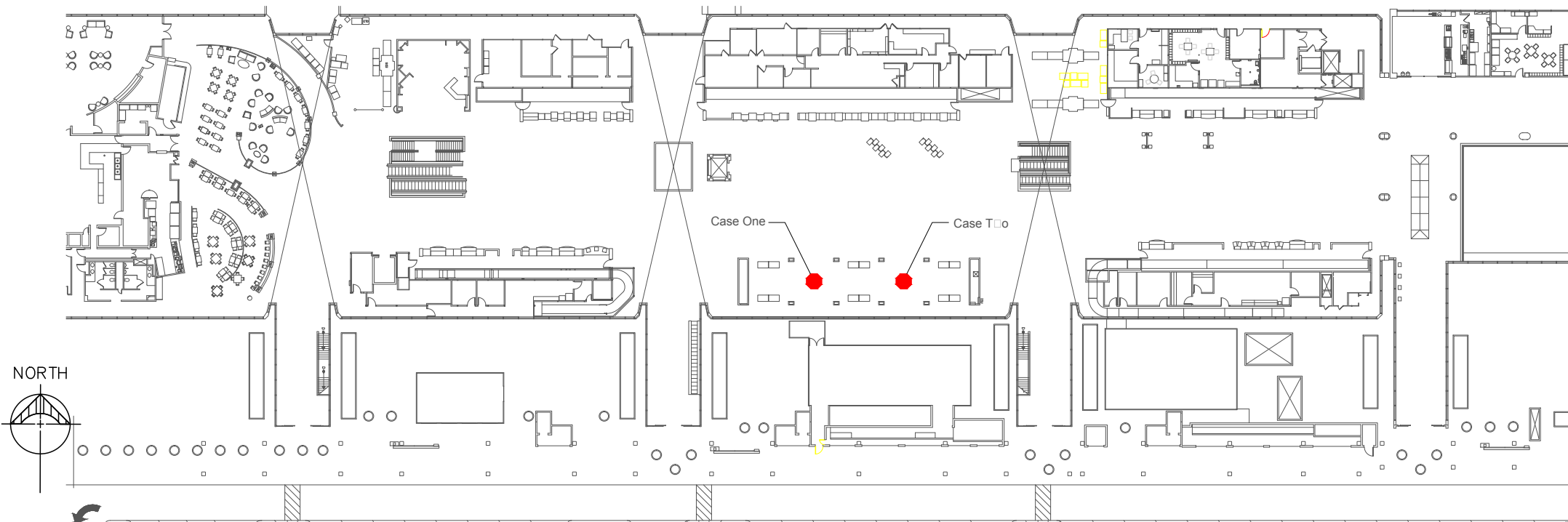
Front & Side View of Display Case Two

Terminal 1 - Ticketing Level
1/2" - 1'-0"



Picture of of Display Case One

No Scale
Terminal 1 - Ticketing Level



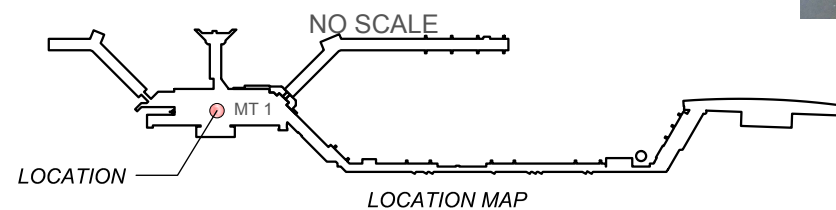
Ticketing Level Art Display Case Area

Terminal 1 - Ticketing Level



Picture of of Display Case Two

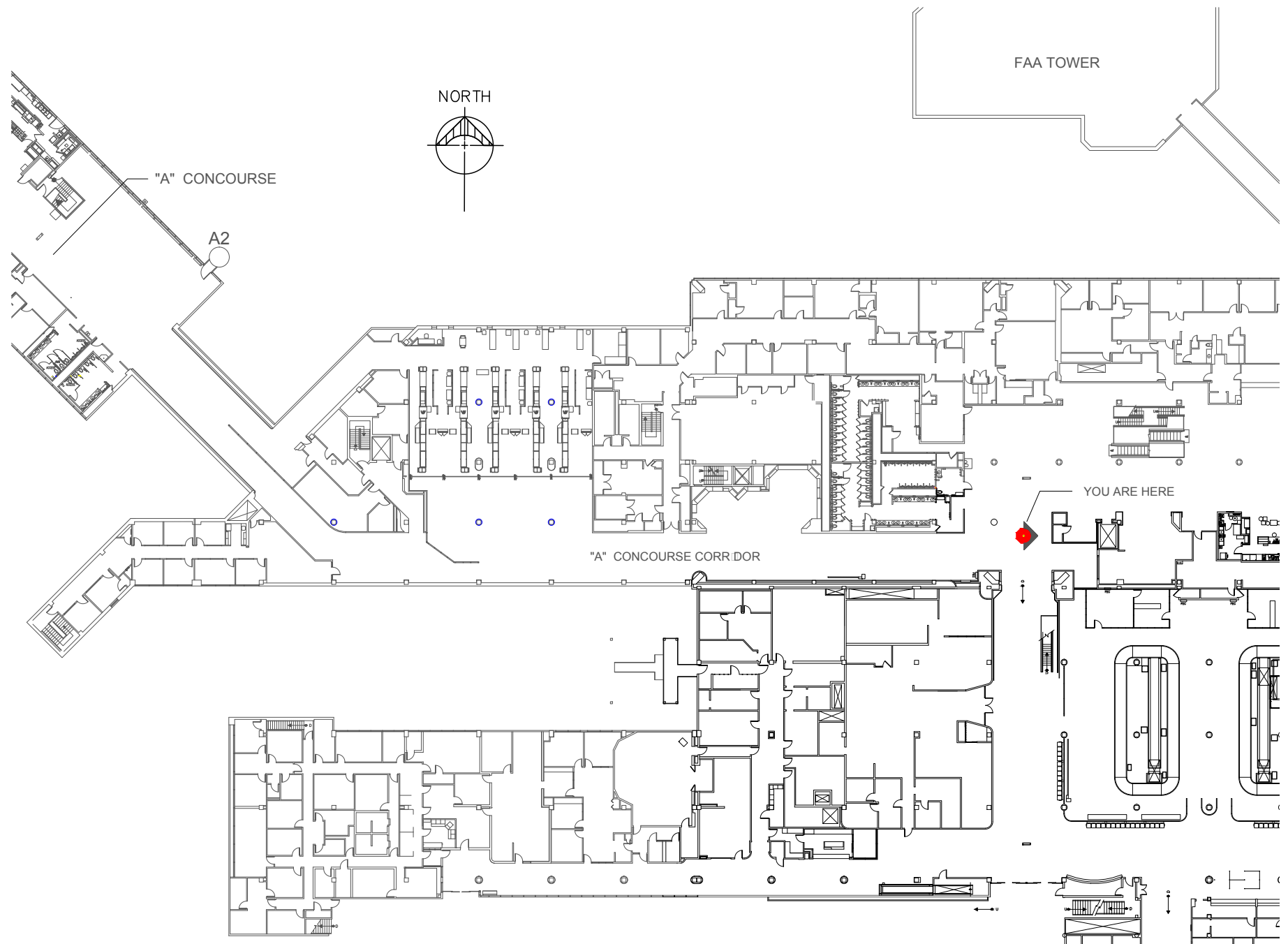
No Scale
Terminal 1 - Ticketing Level



LOCATION

LOCATION MAP

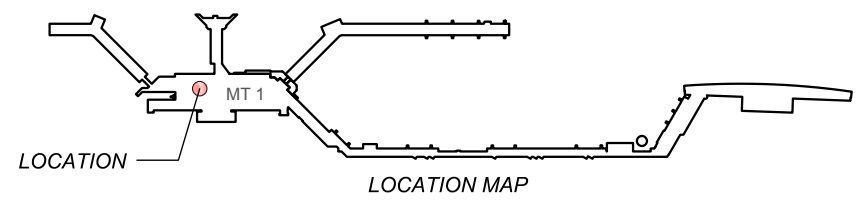
NO SCALE



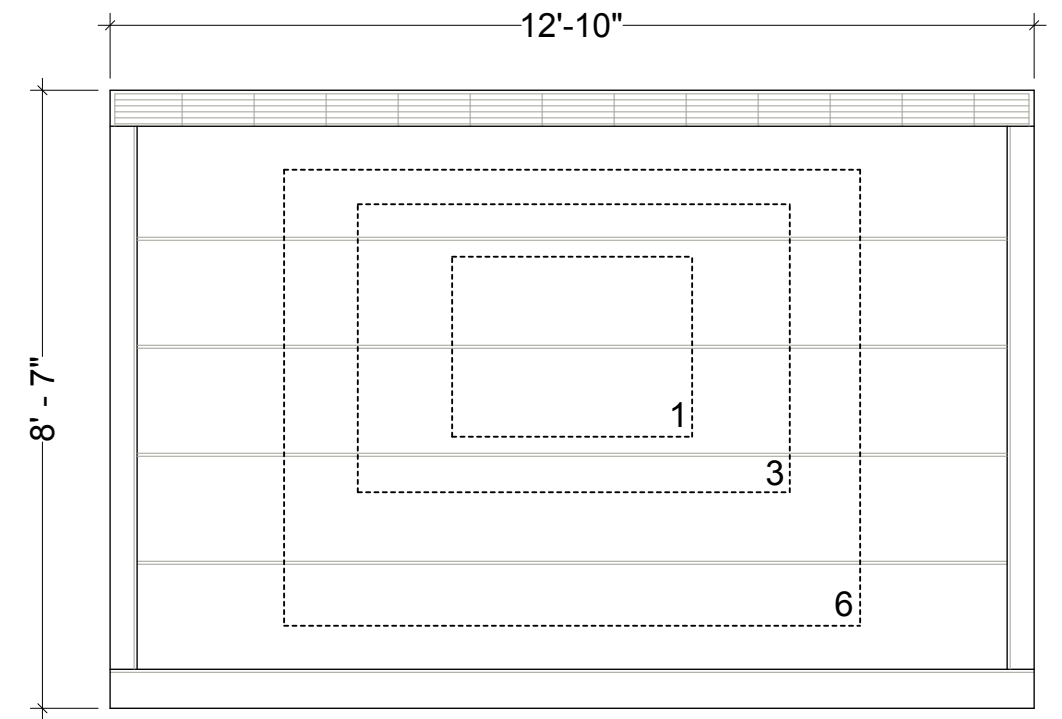
"A" Concourse Corridor Wall
Terminal 1 - Baggage Claim Level NO SCALE

Legend

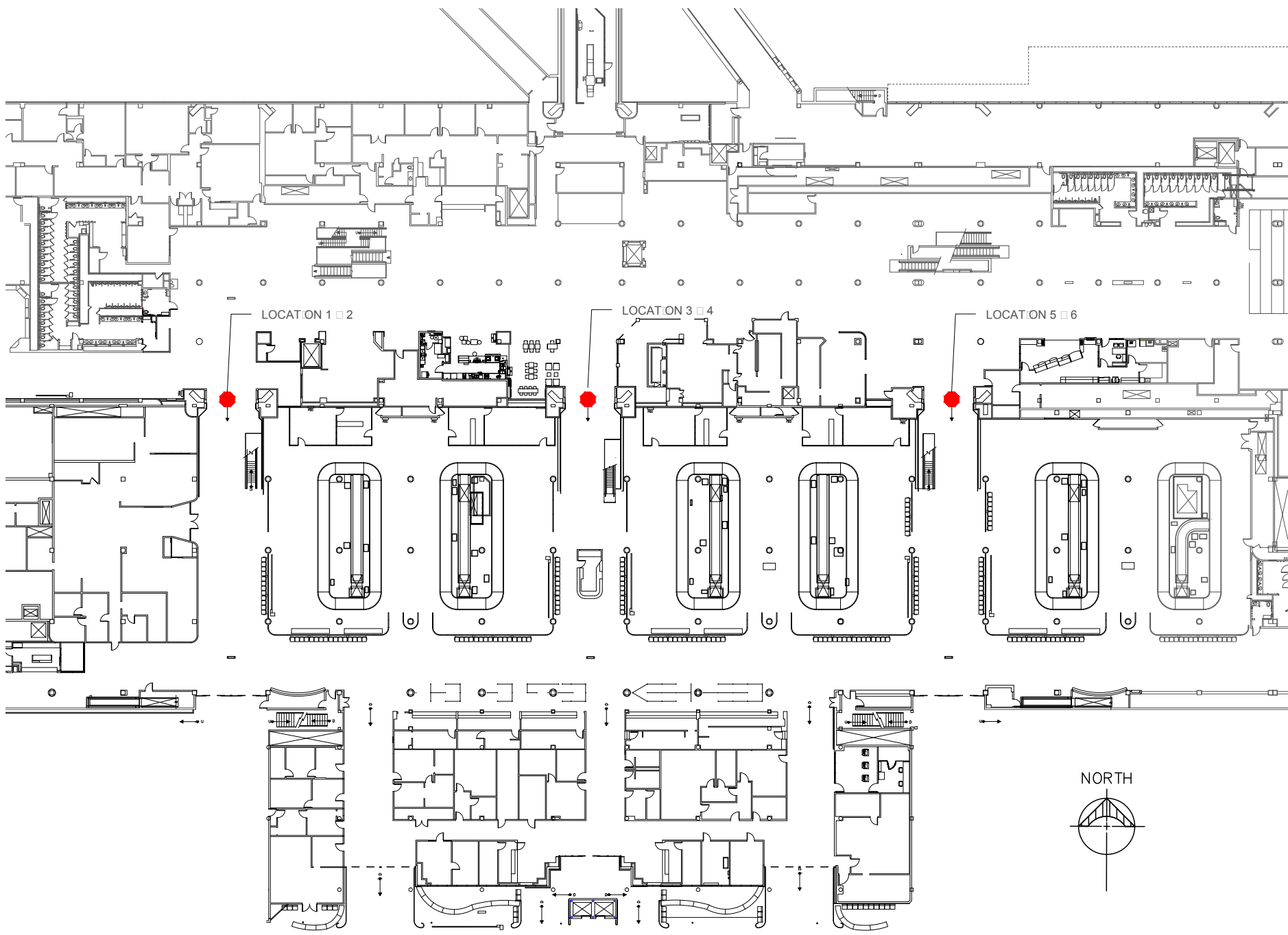
Area	Display Width	Display Height
1	3' - 4"	2' - 6"
3	6' - 0"	4' - 0"
6	8' - 0"	6' - 4"



Picture of Art Display Wall
Terminal 1 - Baggage Claim Level $\frac{3}{8}$ " - 1'-0"



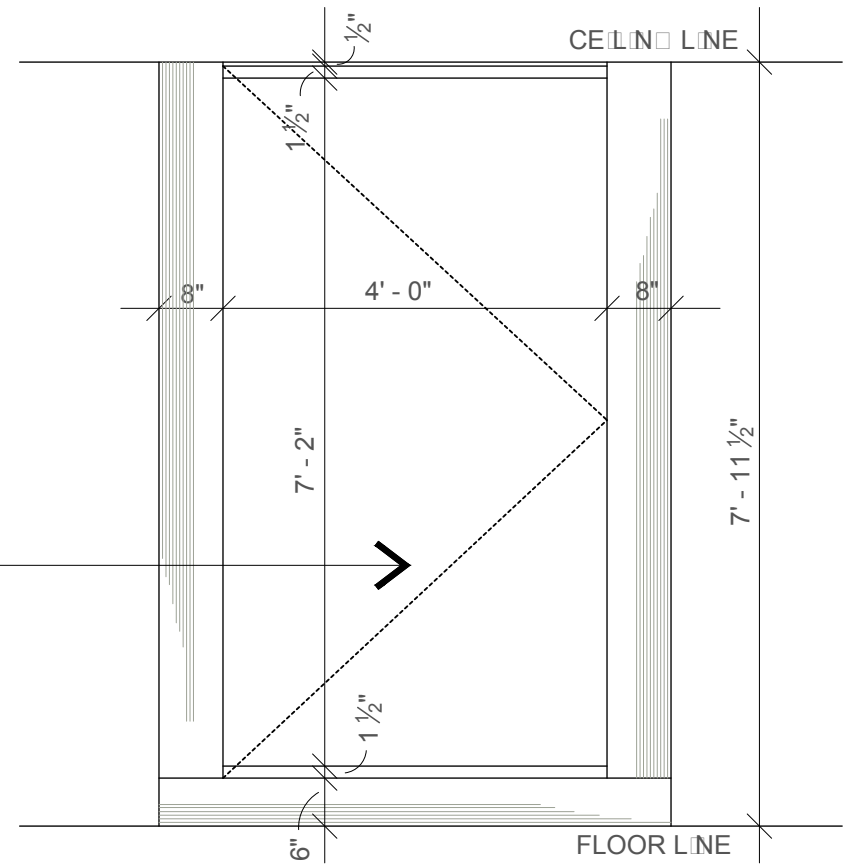
Front Elevation of Art Display Wall
Terminal 1 - Baggage Claim Level $\frac{3}{8}$ " - 1'-0"



Six (6) Locations of Display Light Box Gallery
Terminal 1 - Baggage Claim Level NO SCALE

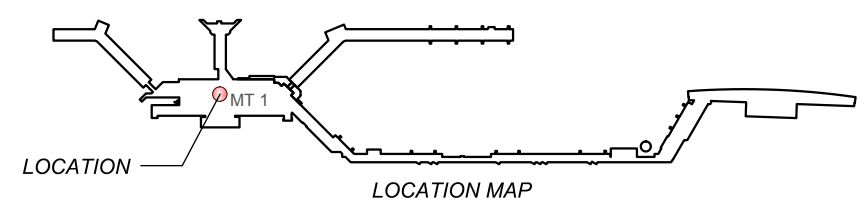


Picture of Display Light Box
Terminal 1 - Baggage Claim Level



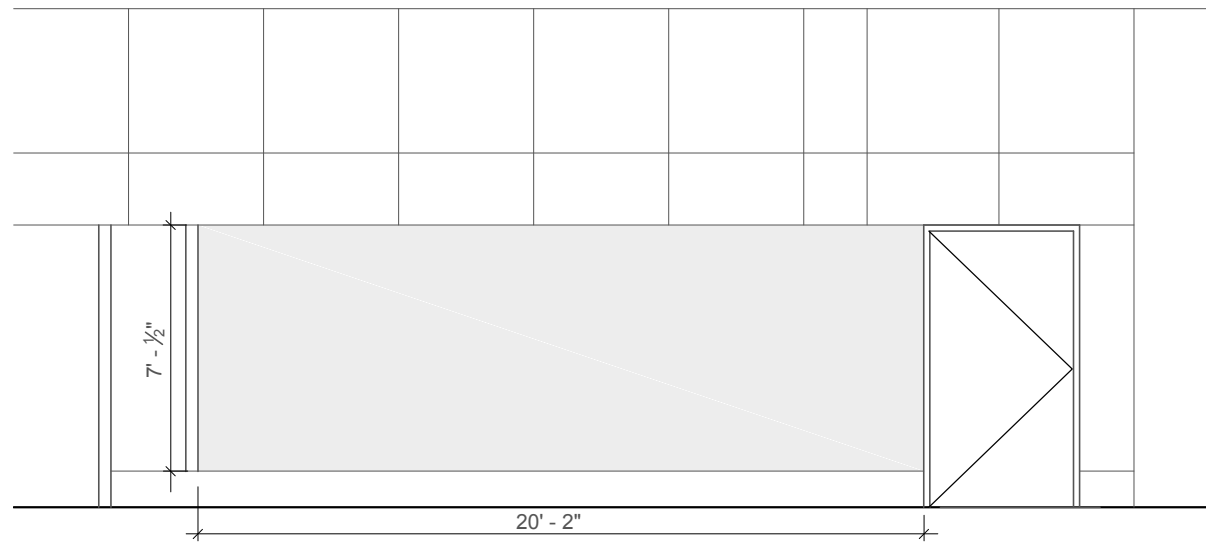
Front Elevation of Display Light Box
Terminal 1 - Baggage Claim Level 1/2" - 1'-0"

Note
Actual Art Film
Insert 3' - 11 1/2" x 7' - 2"

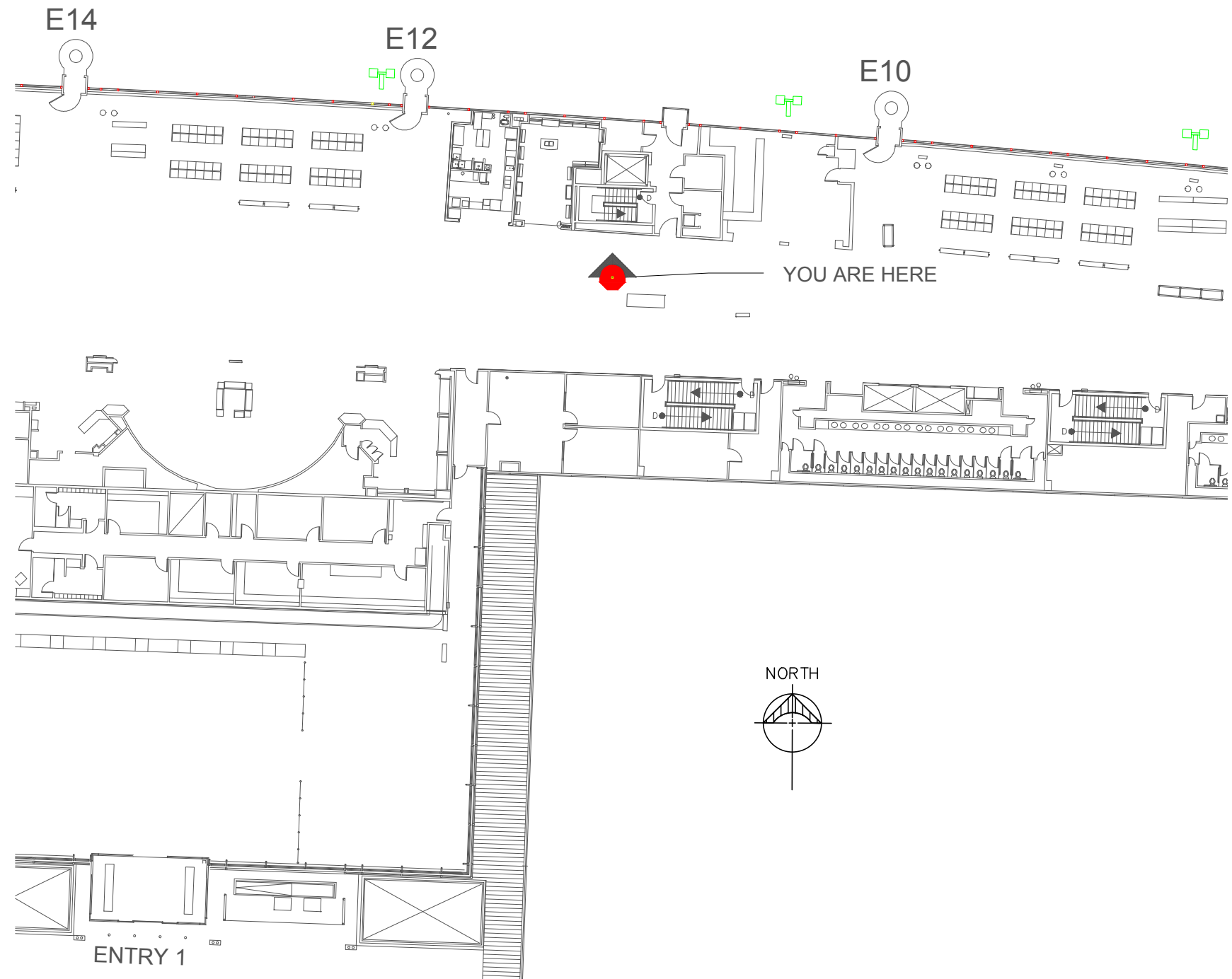




Picture of East Art Display Wall
No Scale Terminal 2 - Ticketing Level



Front Elevation of East Art Display Wall
 $\frac{3}{16}'' = 1' - 0''$ Terminal 2 - Ticketing Level



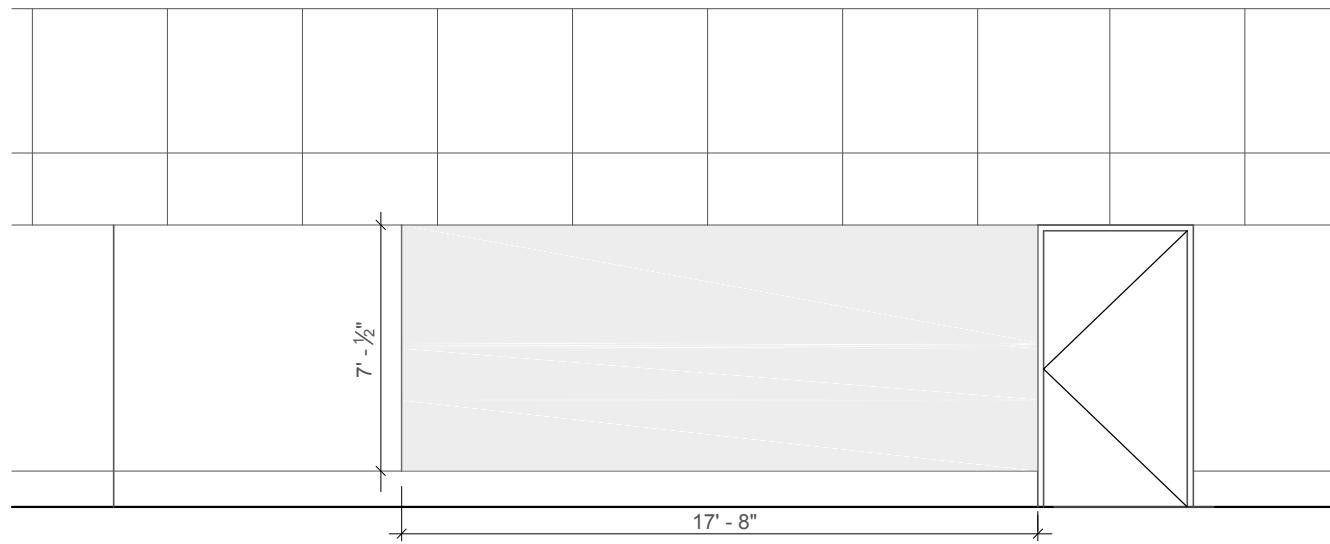
Terminal 2 East Art Display Wall
Terminal 2 - Ticketing Level $\frac{1}{32}'' = 1' - 0''$



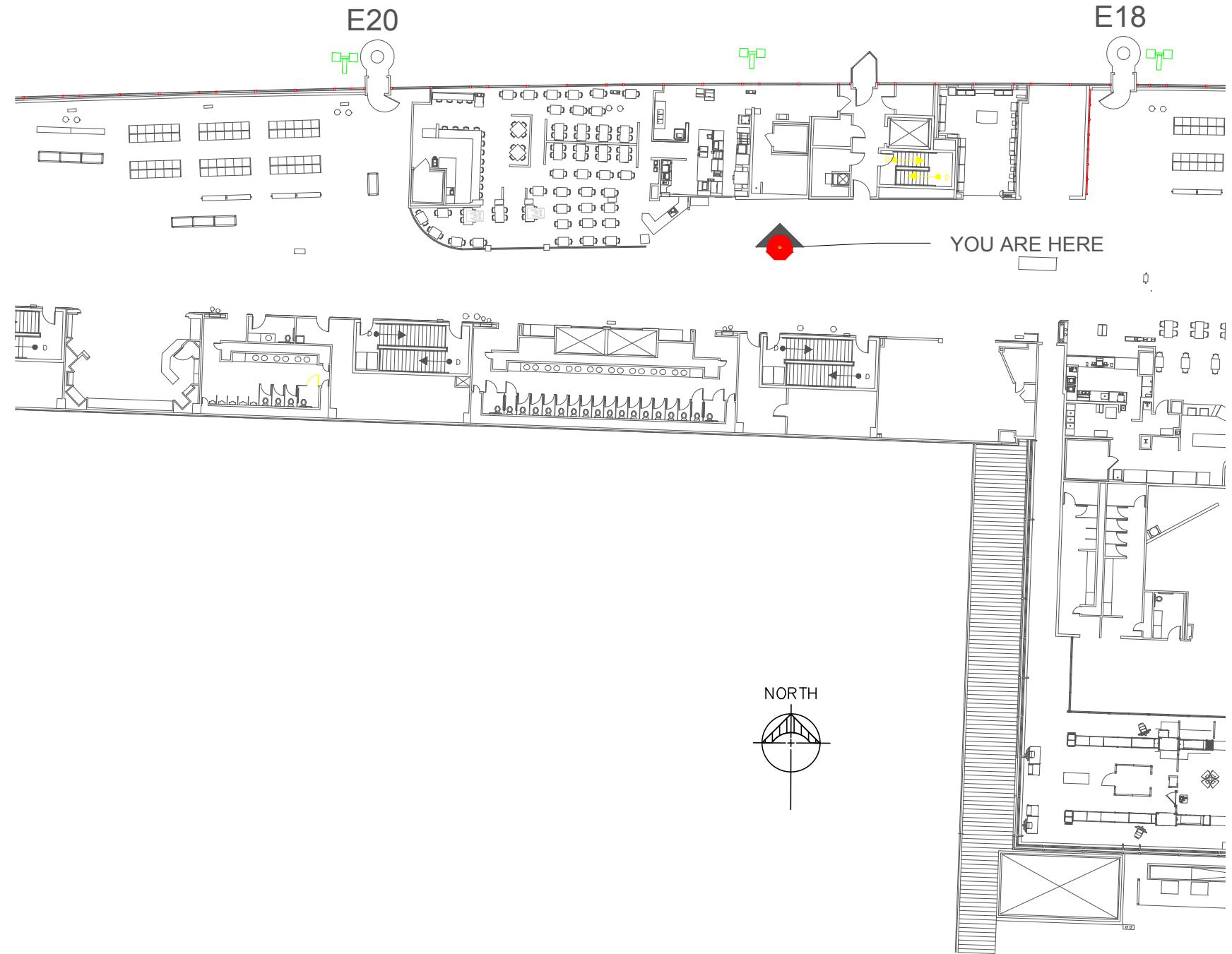
LOCATION MAP



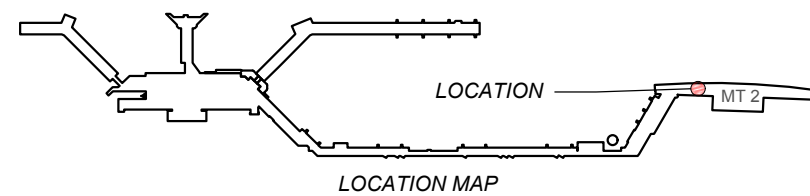
Picture of West Art Display Wall
 No Scale Terminal 1 - Ticketing Level

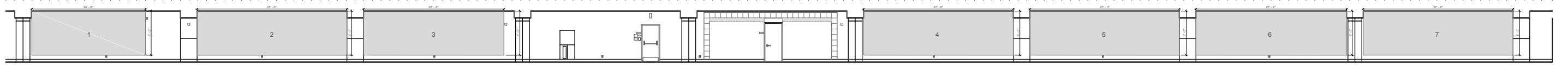


Front Elevation of West Art Display Wall
 $\frac{3}{16}'' = 1' - 0''$ Terminal 2 - Ticketing Level



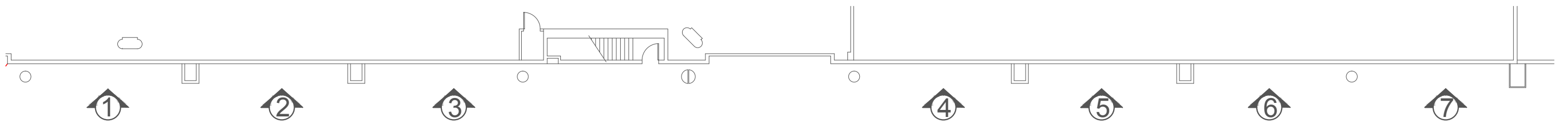
Terminal 2 West Art Display Wall
 Terminal 2 - Ticketing Level $\frac{1}{32}'' = 1' - 0''$





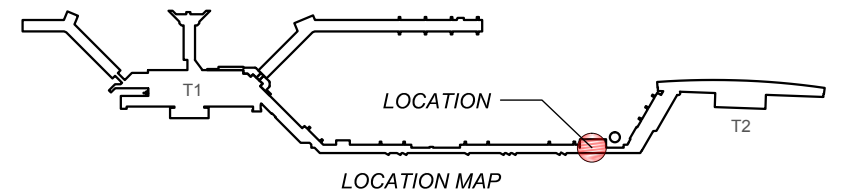
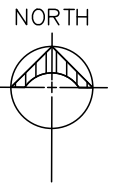
Front Elevation Concourse Level T2 Art Display Area Overall

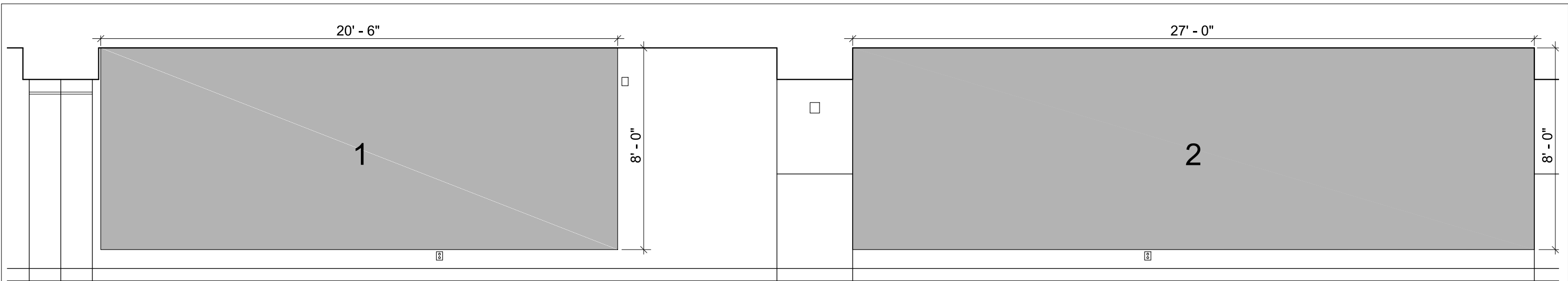
Terminal 2 - Concourse Level E33-34 Gate Area NOT TO SCALE



Existing Floor Plan Concourse Level T2 Art Display Area

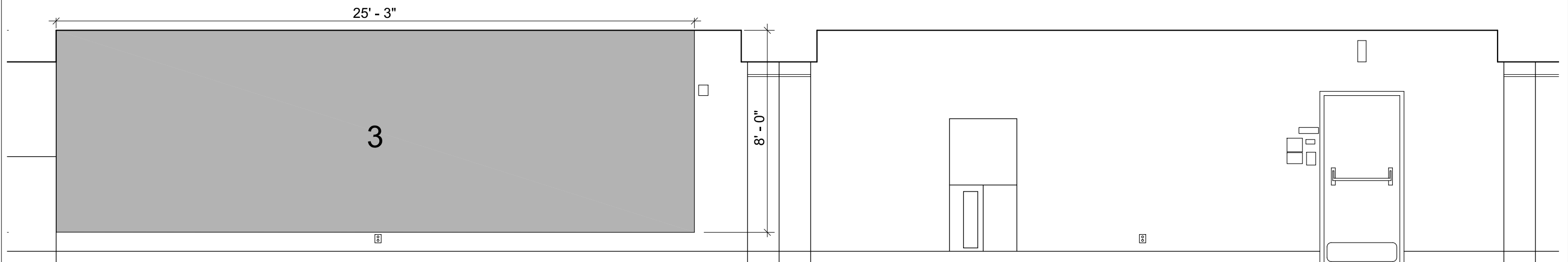
Terminal 2 - Concourse Level E33-34 Gate Area NOT TO SCALE





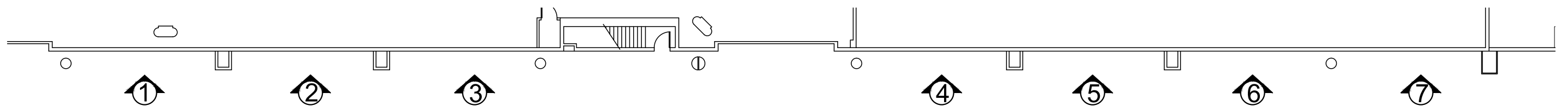
Front Elevation Concourse Level T2 Art Display Area 1 & 2

Terminal 2 - Concourse Level E33-34 Gate Area 1/4" = 1' - 0"



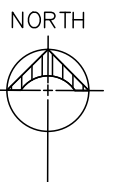
Front Elevation Concourse Level T2 Art Display Area 3

Terminal 2 - Concourse Level E33-34 Gate Area 1/4" = 1' - 0"



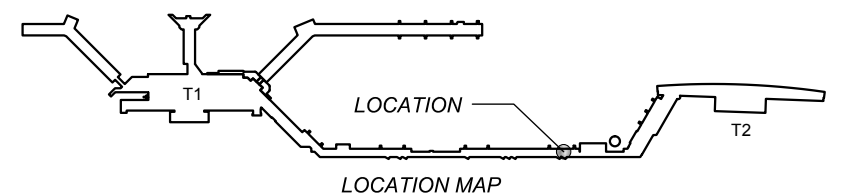
Existing Floor Plan Concourse Level T2 Art Display Area

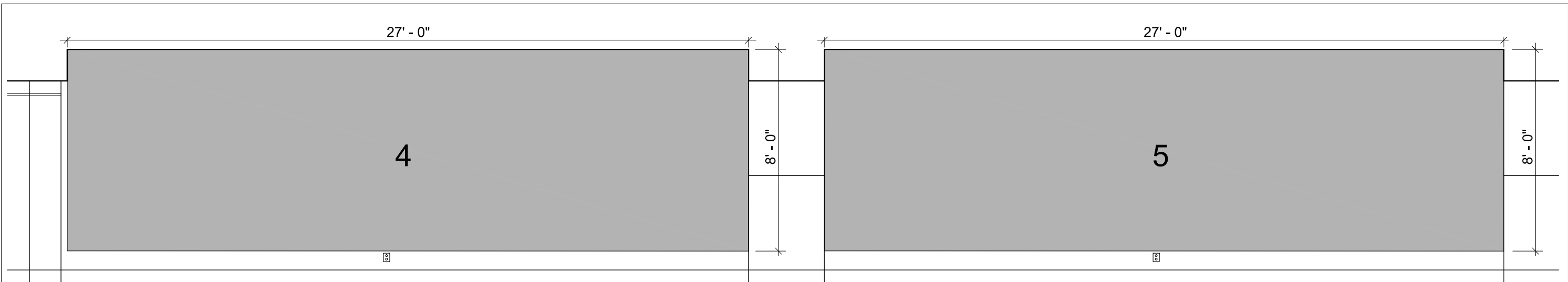
Terminal 2 - Concourse Level E33-34 Gate Area 1/4" = 1' - 0"



City of St. Louis, Public Relations /
P.O. Box 10212 St. Louis MO. / 63145 (314) 426-8125

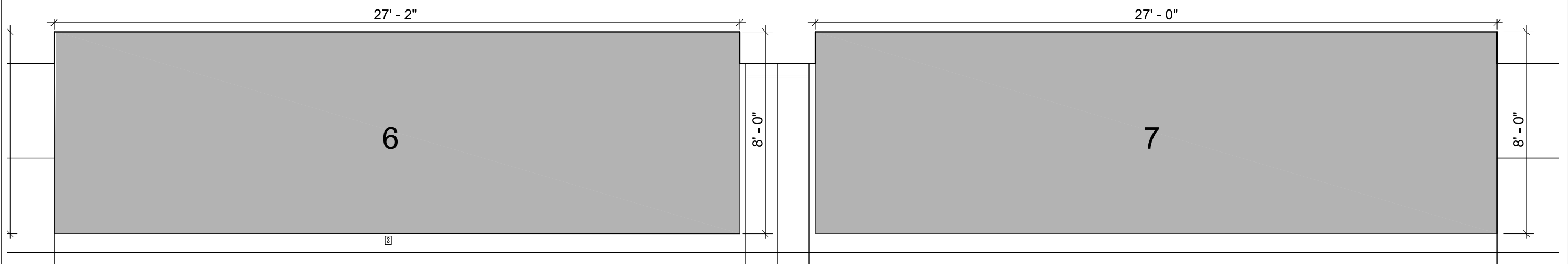
JULY 10, 2017





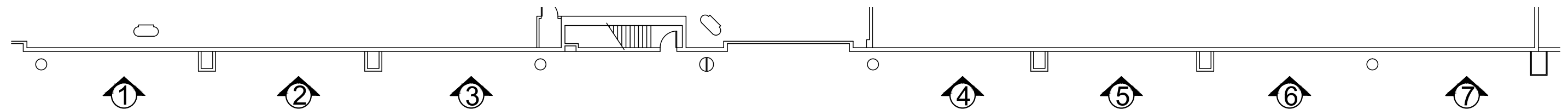
Front Elevation Concourse Level T2 Art Display Area 4 & 5

Terminal 2 - Concourse Level E33-34 Gate Area 1/4" = 1' - 0"



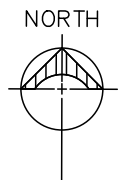
Front Elevation Concourse Level T2 Art Display Area 6 & 7

Terminal 2 - Concourse Level E33-34 Gate Area 1/4" = 1' - 0"



Existing Floor Plan Concourse Level T2 Art Display Area

Terminal 2 - Concourse Level E33-34 Gate Area 1/4" = 1' - 0"



City of St. Louis, Public Relations /
P.O. Box 10212 St. Louis MO. / 63145 (314) 426-8125

JULY 10, 2017

