

## REQUEST FOR ARTIST QUALIFICATIONS

### Terminal 2 Mural at St. Louis Lambert International Airport

The Lambert Art and Culture Program at St. Louis Lambert International Airport (STL Airport) seeks an artist or artist team to design and execute a painted, exterior mural on a newly built concrete structure outside of Terminal 2. **This is an open call to artists based in the St. Louis region who have experience producing and installing murals or if an artist has not previously worked at the scale of this project they should share what steps they would take to scale their artwork and successfully implement this project.** The submission process is described below. Specific proposals are not requested at this time.

The budget for the project is \$15,000, exclusive of paint and painting supplies. The wall will be cleaned and primed to the specifications of the selected artist. Please see more detailed budget information below.

Qualification materials are due **March 7, 2021**.

#### BACKGROUND

*The Lambert Art and Culture Program builds upon the culturally rich legacy of St. Louis Lambert International Airport. Our mission is to elevate the visitor experience and uplift regional pride through the presentation of artwork created by local, national, and international artists.*

The Art and Culture Program grew out of STL Airport's *Airport Experience Program*, a \$70 million renovation project (2008) to improve the Airport's operations and pay tribute to the building's iconic architecture and historic role as a civic space and landmark. In 2010, the Airport created the Airport Art Advisory Committee (AAAC). The committee consists of seven highly qualified local arts professionals appointed by the Mayor of St. Louis who advise the Lambert Art and Culture Program. To date, the Lambert Art and Culture Program has commissioned twelve new permanent public art projects. In celebration of the Airport's 100<sup>th</sup> Anniversary in 2020, the Art and Culture Program commissioned two new permanent works of art in Terminal 1: a glass panel work to celebrate the life and legacy of Airport founder Major Albert Bond Lambert created by artist Martin Donlin and a site-specific wall installation "The Building as a Pretext" by artist Sarah Morris. Both are scheduled to install in early 2021.

In addition to permanent art works, the Lambert Art and Culture Program has a growing temporary exhibitions program in numerous locations throughout the Airport, including the Lambert Gallery in Terminal 1, and various display walls and display cases throughout both Terminal 1 and Terminal 2.

For more information about Lambert's Art and Culture program, visit [www.artoftravelstl.com](http://www.artoftravelstl.com)

#### PROJECT DESCRIPTION

STL Airport recently completed a series of renovations to improve the passenger experience at Terminal 2. The enhancements to the Arrivals Drive help to improve traffic congestion and add curbside parking to the lower level of the terminal. The improvements include a designated shuttle pick-up area beside the terminal and to the north of the Arrivals Drive. Near this shuttle pick-up area, a large

concrete structure was built to enclose necessary utilities. This surface and the adjoining barrier wall along the east side of the shuttle area provide an opportunity for a painted mural which will be highly visible to those awaiting a shuttle to Terminal 1, a hotel, or to offsite parking; to those arriving at Terminal 2 by vehicle; and to visitors on the upper departures level and adjoining parking garage.

The selected artist will design a site-specific mural to make the best use of the surface area and available budget. The mural will be on display for a minimum of five years.

### **Site**

The site of the painted mural is a newly built concrete generator enclosure and adjoining wall to the east of the Terminal 2 entrances on the Arrivals (lower) level. The west and south facing surfaces of the enclosure are the priority location. The adjoining west-facing wall in the shuttle loading area is a secondary location that could also be explored by the selected artist. The selected artist will create a design that is site-specific and that creates visual interest in visitor focal points but does not need to cover the entire surface area. Specific proposals are not requested at this time.

The west-facing surface of the enclosure is approximately 350 square feet (16' high x 22' long.) The west-facing surface includes two vents which could be painted as part of the mural but need to remain functional. The south-facing surface of the enclosure is approximately 750 square feet (16' high x 45' long.) The adjoining west-facing wall in the shuttle pick-up area is approximately 8' high and 66' long.

### **Public Art Goals**

The goals of the Lambert Art and Culture Program are to:

- Feature the best local, national and international talent.
- Enhance gathering places for airport customers.
- Complement and build upon the established visual identity of the airport.
- Generate community pride while inspiring joy and wonder.
- Create a visually outstanding impression of St. Louis.
- Endure multiple visits to the airport.

The goals of Terminal 2 Outdoor Mural are to:

- Create a sense of arrival for visitors and a sense of returning home for residents with a unique and memorable work of art.
- Highlight the unique art and culture in the St. Louis region by spotlighting the vibrancy and diversity of the St. Louis art scene.
- Create a welcome and enjoyable waiting environment in this newly built public space.
- Enhance the appearance of a utilitarian element of the Airport's infrastructure.
- Create a visual cue and landmark for airport customers.

### **Eligibility**

**This opportunity will be open to artists in the St. Louis region, eligible artists will live within a 150-mile radius of STL Airport. The selected artist should have experience creating murals or if an artist has not**

**previously worked at the scale of this project they should share what steps they would take to scale their artwork and successfully implement this project.**

### **Budget**

The total budget for the project will be \$15,000. This budget does not include paint and painting supplies required to execute the mural. These will be specified by the artist and approved by the STL Airport as part of design approval; STL Airport will directly order and pay for those supplies. STL Airport will also deliver the walls cleaned, primed, and ready for the artist to start painting. This budget must cover all other costs associated with the project, including, but not limited to: artist fees, travel, licenses, insurance, labor, and rental/set-up of installation lifts or scaffolding.

Selected artists will be required to enter into an agreement with the Airport. That agreement must be approved prior to payment and will require that the artist is in good standing with the City of St. Louis for any taxes or license fees owed to the City.

### **Scope of Work**

The selected artist or artist team will be responsible for the following:

- Developing a unique concept and design for a site-specific, painted, outdoor mural.
- Coordinating with the airport for purchase of approved paints and materials; coordinating with the airport for the cleaning and priming of the walls.
- Coordinating with the Airport to develop a schedule for the mural execution including coordinating any necessary temporary traffic modifications, access to water, and equipment storage needs.
- Executing the mural on an agreed upon date(s).
- Bringing all required materials needed for execution of the mural, including lifts and equipment to be able to safely reach the wall to be installed. Equipment must be approved by Airport staff prior to installation.
- Providing proof of general liability insurance in the amount of \$1,000,000.00. The certificate must name The City of St. Louis, Missouri, its Board of Alderman, Airport Commission, officers, employees, and agents as additional insured.
- Completing all necessary licensing and tax forms for payment processing from the City of St. Louis.
- Providing materials to STL Airport to assist with the Airport's promotion of the mural and related event(s).
- Promoting the mural through any available communications with fans or followers, i.e. mailings, newsletters, email blasts, and social media.
- Collaborate with the City of St. Louis and the Airport on media.

The Airport will be responsible for the following:

- Purchasing approved paint and painting supplies as agreed upon with the selected artist.
- Cleaning and priming the wall in preparation for selected artist's mural application.

- Providing installation assistance, as needed, including any necessary temporary traffic modifications, water access, and equipment storage, excluding providing lifts or scaffolding equipment, which is the responsibility of the artist.
- Printing and installing signage about the mural.
- Collaborating with the artists or artist teams on media.
- Promoting the exhibition and related event(s) through the Airport’s email and social media communications.
- Notifying Airport Police Department and security officials of mural and mural installation dates.
- Keeping the mural and surrounding space clean for the duration of the mural.

**SELECTION PROCESS**

Qualifications will be reviewed by the AAAC. The AAAC will recommend selection of an artist to STL Airport. The selected artist will be placed under contract to develop a two-dimensional concept proposal, narrative description, timeline, and budget. The AAAC will review the concept design and recommend the design to STL Airport for approval.

Artist qualifications will be reviewed by the AAAC based on the following criteria:

- Artistic excellence and innovation as demonstrated by past work and the submitted materials.
- Understanding of the project and ability to create an artwork that responds to the goals of the project.
- Demonstrated experience in creating murals or consideration of how a project of this scale could be successfully implemented based on previous experience.

**ANTICIPATED TIMELINE**

February 14, 2021	Deadline to submit all questions
<b>March 7, 2021</b>	<b>Qualifications Due</b>
March 2021	AAAC reviews qualifications and recommends an artist
May 2021	Artist submits design concept for approval
May 2021	AAAC reviews design
June 2021	Final installation plan
Summer 2021	Installation

**TO SUBMIT**

Please submit the following materials by March 7, 2021:

- A brief letter describing your interest in the project and confirming your ability to meet the project timeline.
- A resume or CV.
- Contact information for 3 references.
- Up to 10 jpeg images of previous artwork.

- A corresponding image list with title, medium, dimensions, brief description, location, date of work, commissioning entity and budget.

PLEASE DO NOT SEND SPECIFIC PROPOSALS AT THIS TIME.

Email your materials to Angie Villa at [villa@viapartnership.com](mailto:villa@viapartnership.com).

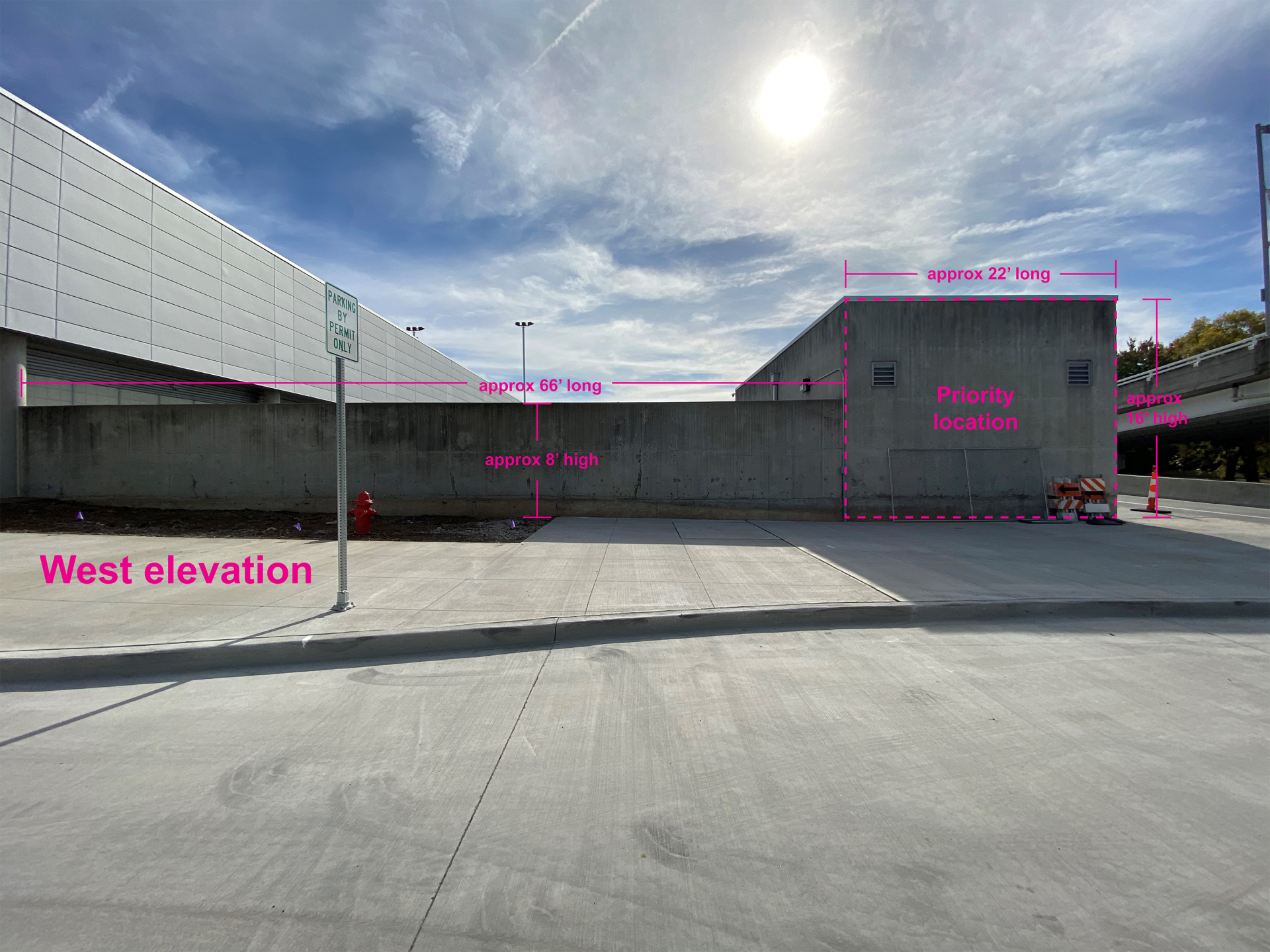
Save written materials as a PDF and images in JPEG format (at least 300 dpi). Please submit materials using a file sharing service such as Dropbox, Google Drive, or Hightail. For submission issues email or call Angie Villa at Via Partnership at [villa@viapartnership.com](mailto:villa@viapartnership.com) or 314.735.9268.

## **QUESTIONS**

Please submit all questions via email to Angie Villa, Via Partnership at [villa@viapartnership.com](mailto:villa@viapartnership.com) no later than February 14, 2021. Responses to all questions will be posted on <http://www.artoftravelstl.com/> by February 19, 2021.

## **ATTACHMENTS**

1. West-facing wall with approximate measurements
2. South-facing wall with approximate measurements
3. West-facing wall from upper level
4. Site from ground level parking lot
5. Site from Arrivals Drive



West elevation

PARKING  
BY  
PERMIT  
ONLY

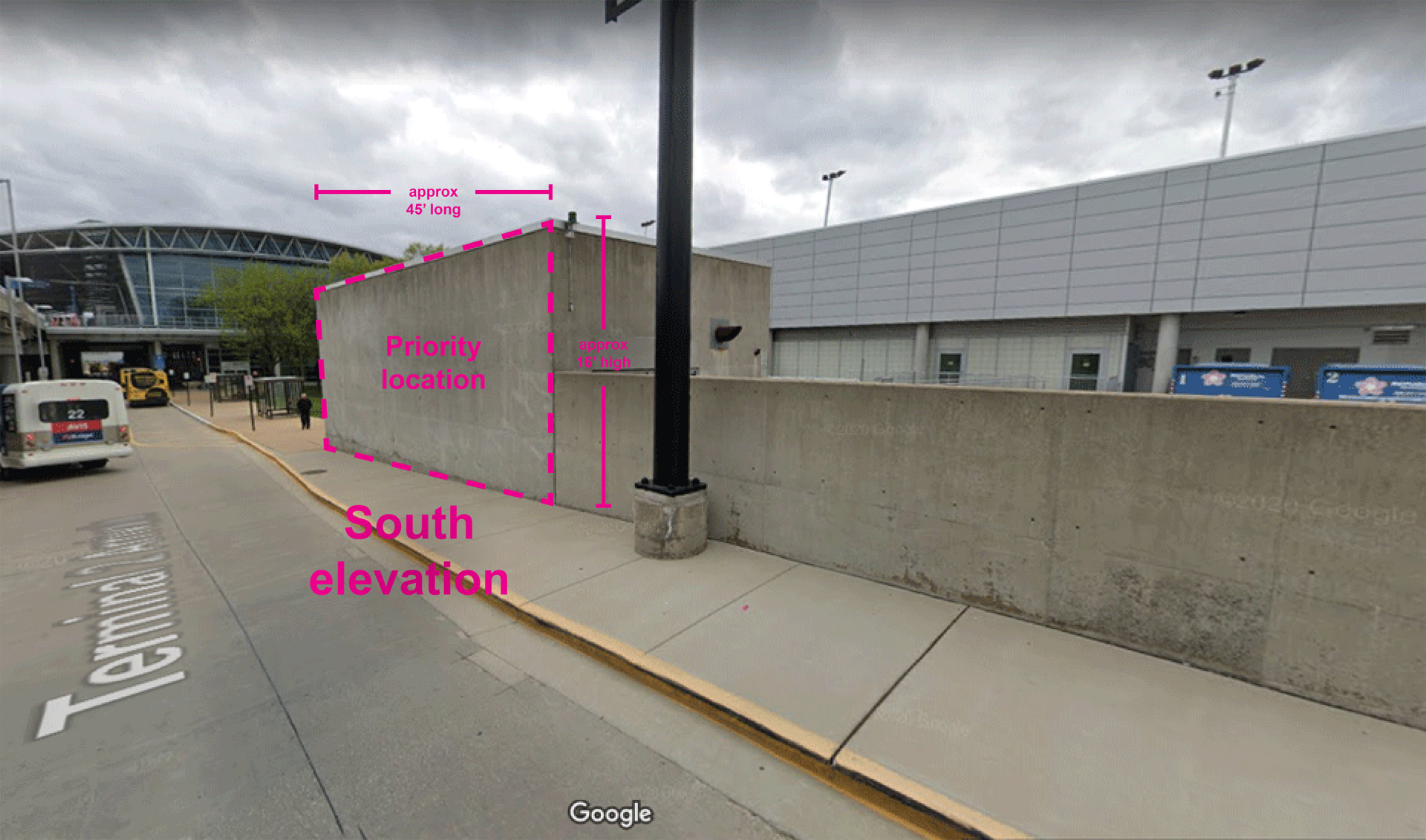
approx 66' long

approx 8' high

approx 22' long

Priority  
location

approx  
16' high



approx 45' long

Priority location

approx 16' high

South elevation







