

**AIRPORT NOISE
MANAGEMENT REPORT
3rd QUARTER 2018**

Airport Noise Management Report 3rd Quarter 2018

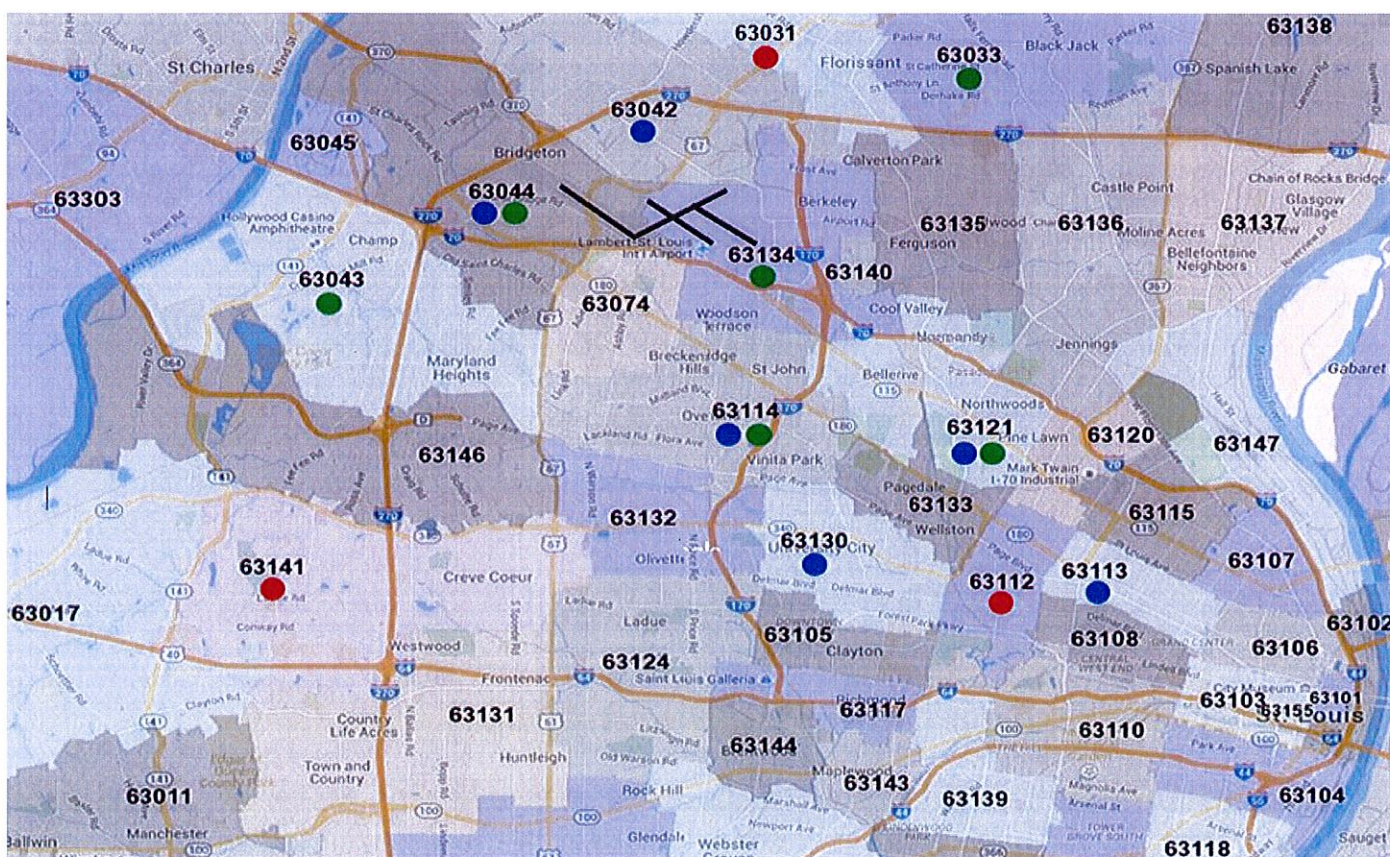
The Airport Noise Management Report provides the 3rd Quarter 2018 summary of St. Louis Lambert International Airport's operations and noise complaints. The data in this report is from Harris, Inc. and not from FAA Air Traffic. This report is illustrative of trends and distribution and should not be construed as official traffic counts.

3RD QUARTER YEAR 2018

NOISE COMPLAINTS

There were 16 noise complaints received in the 3rd Quarter 2018 as compared to the 8 noise complaints in the 3rd Quarter of 2017. The 16 complaints were from seven communities. Two complainants stated that there were too many aircraft departing on Runway 29 disrupting outside activities. Another complainant said that there appeared to be an increase in the number of overflights over his house in South St. Louis. Residents in Pasadena Hills complained that arriving aircraft were flying over their homes in the early morning hours. Several Bridgeton residents complained about military aircraft departures.

Thirteen complaints were about day time operations (7:00 a.m. to 10:00 p.m.). Landings and take-offs (operations) during the day time hours accounted for 86.4% of the operations while 13.6% of the operations occurred during the night time period. Chart below shows number of complaints by zip code.

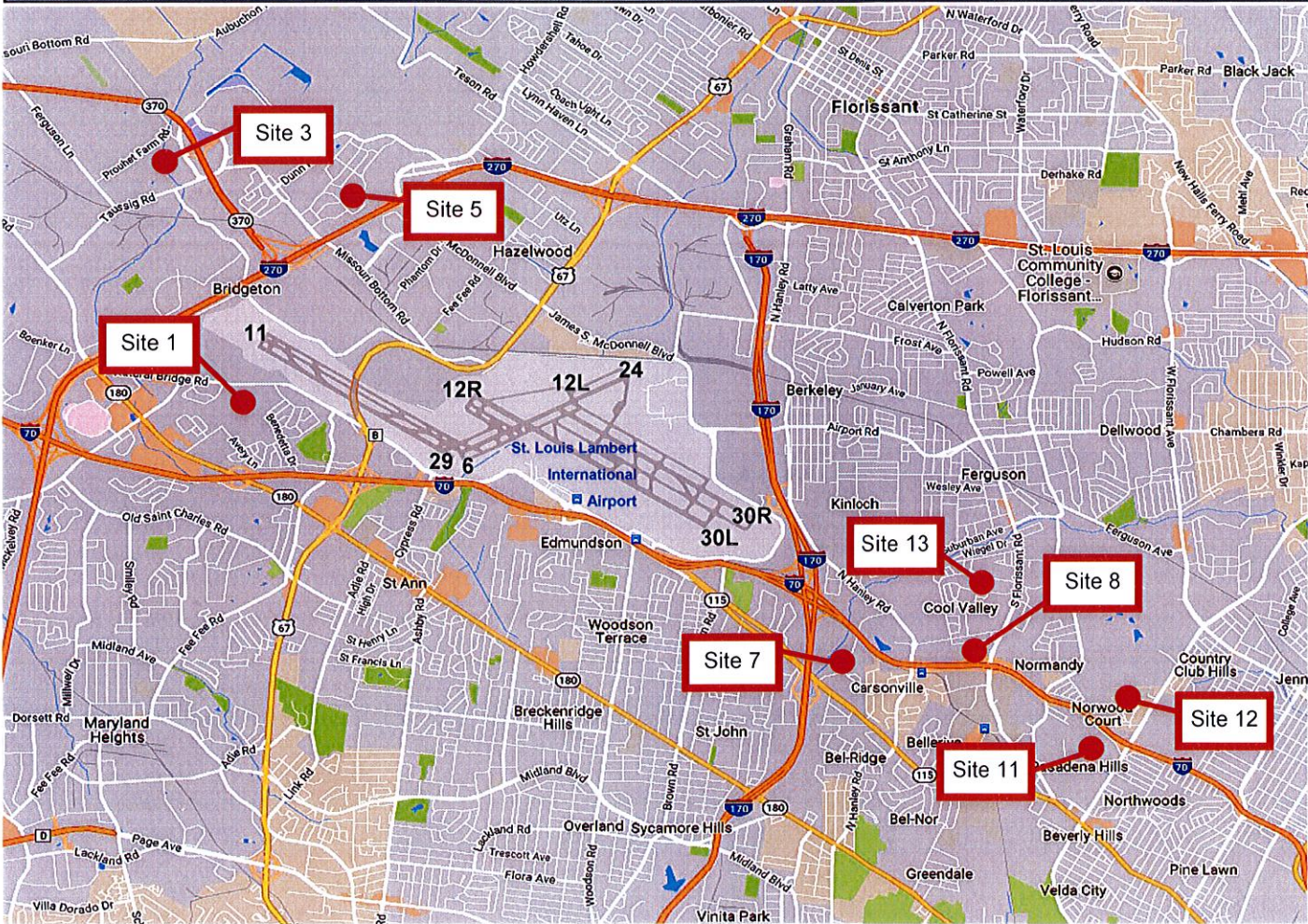


Quarters	Zip	Calls	Zip	Calls	Zip	Calls	Zip	Calls	Zip	Calls	Zip	Calls	Zip	Calls
1st Quarter	63031	3	63112	2	63141	1	-	-	-	-	-	-	-	-
2nd Quarter	63042	1	63044	3	63113	1	63114	1	63121	5	63130	1	63301	2
3rd Quarter	63033	2	63043	2	63044	6	63109	1	63114	1	63121	3	63134	1
4th Quarter	-	-	-	-	-	-	-	-	-	-	-	-	-	-

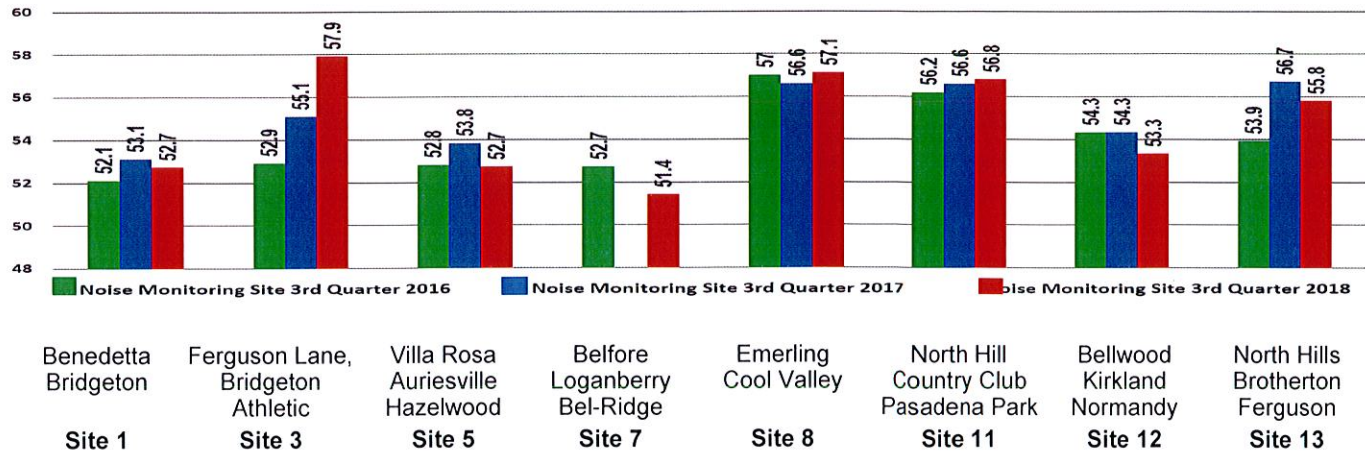
RUNWAY IDENTIFICATION

The runways at St. Louis Lambert International Airport are: 12R/30L (11,019'x200'), 12L/30R (9,003'x150'), 11/29 (9,001'x150'), and 6/24 (7,607'x150').

PERMANENT NOISE MONITORING SITES

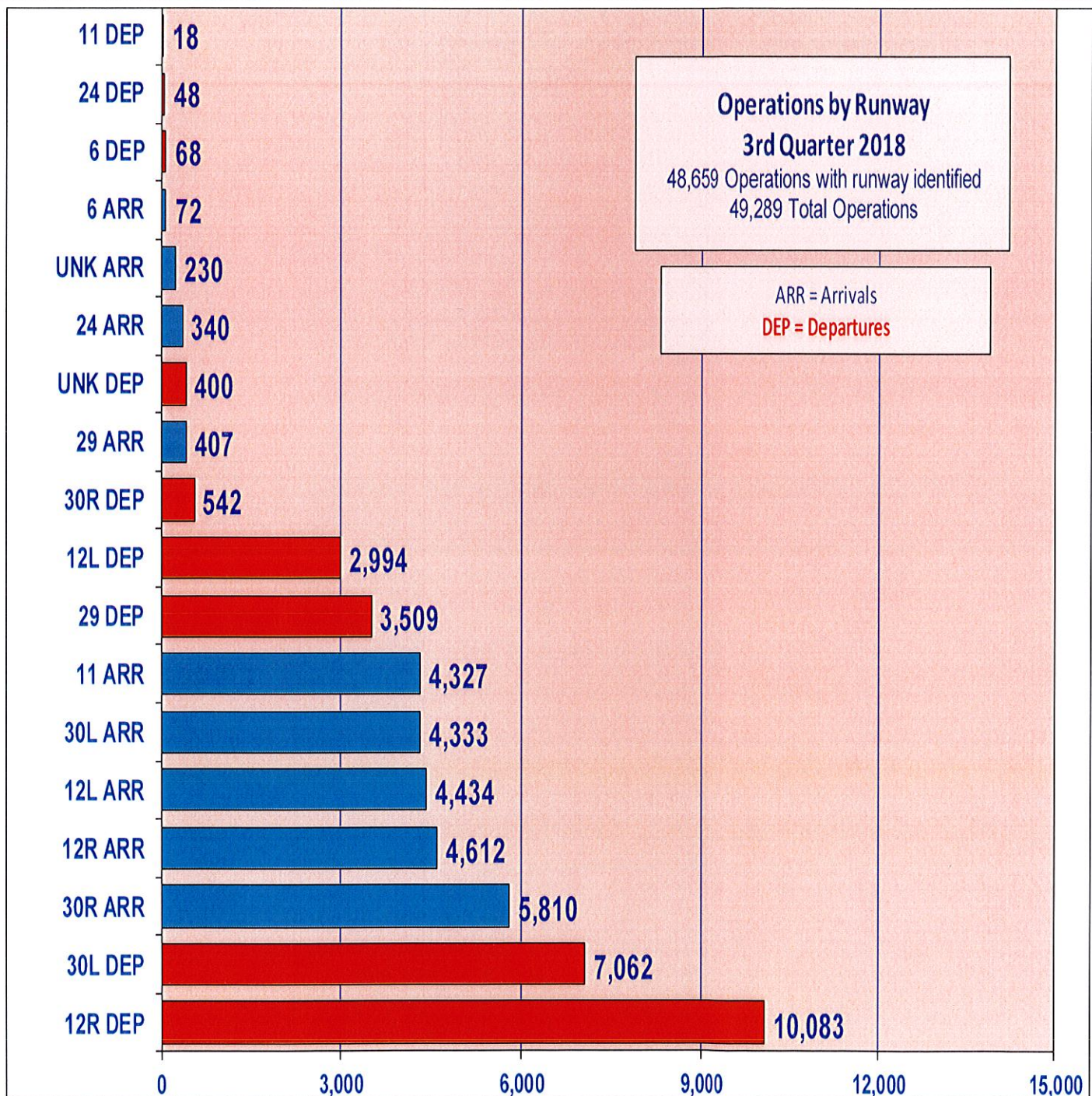


Noise Monitoring Data
3rd Quarter 2018 Average DNL (Day/Night/Level)
Years 2016-2018



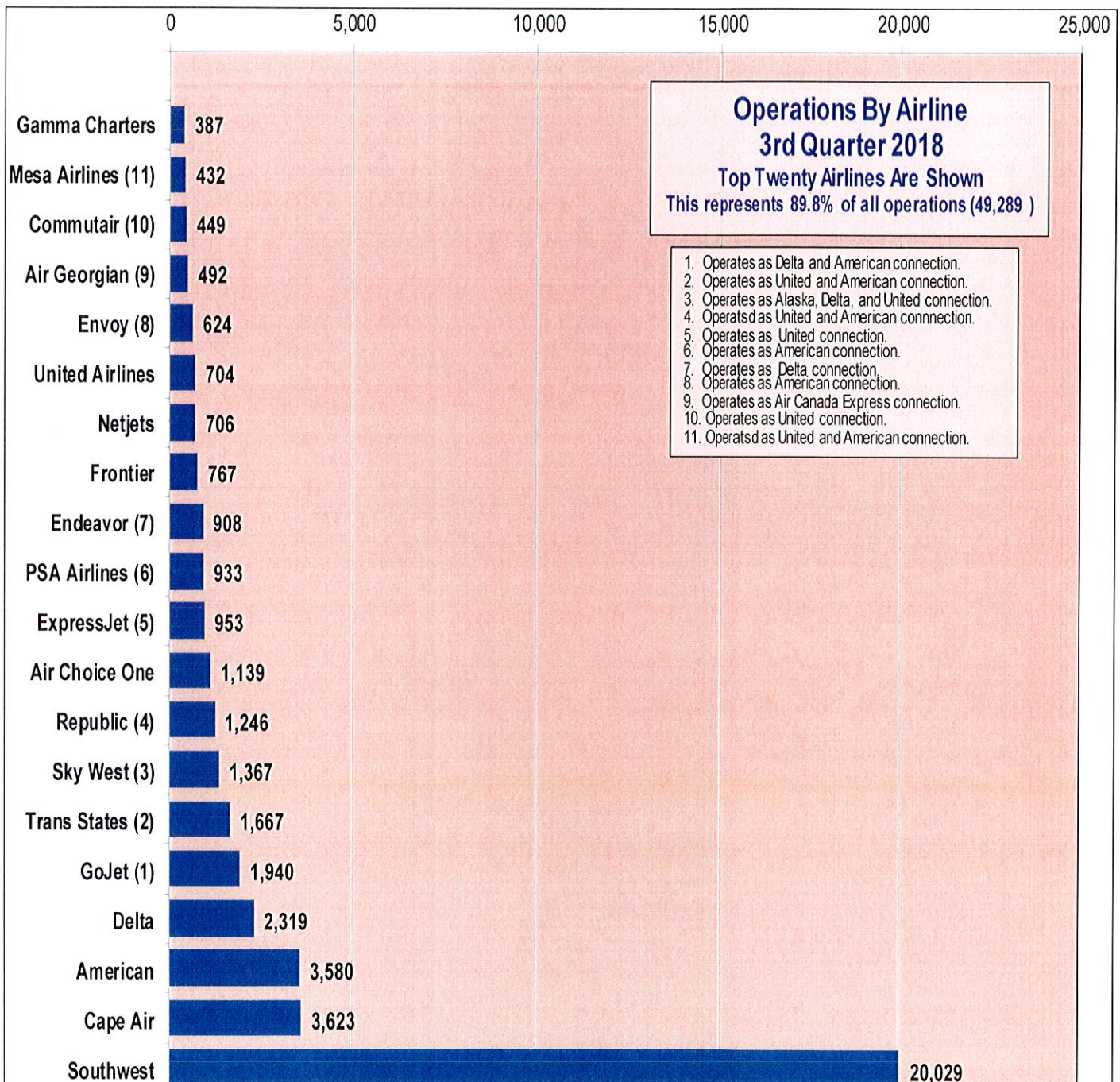
OPERATIONS BY RUNWAY

There were 49,289 operations recorded in the 3rd Quarter of 2018 as compared to 50,291 operations in the 3rd Quarter of 2017, a decrease of -2.0%. The most utilized runway for known arrivals was Runway 30R (5,810) with 11.9% all operations. The most utilized runway for known departures was Runway 12L (10,083) with 20.7% of all operations. Runway 12L/30R was closed for a part of July and August due to runway reconstruction. There were 48,659 (98.7%) operations in which the runway was identified and 630 operations (1.3%) where the runways were not identified.



OPERATIONS BY AIRLINE

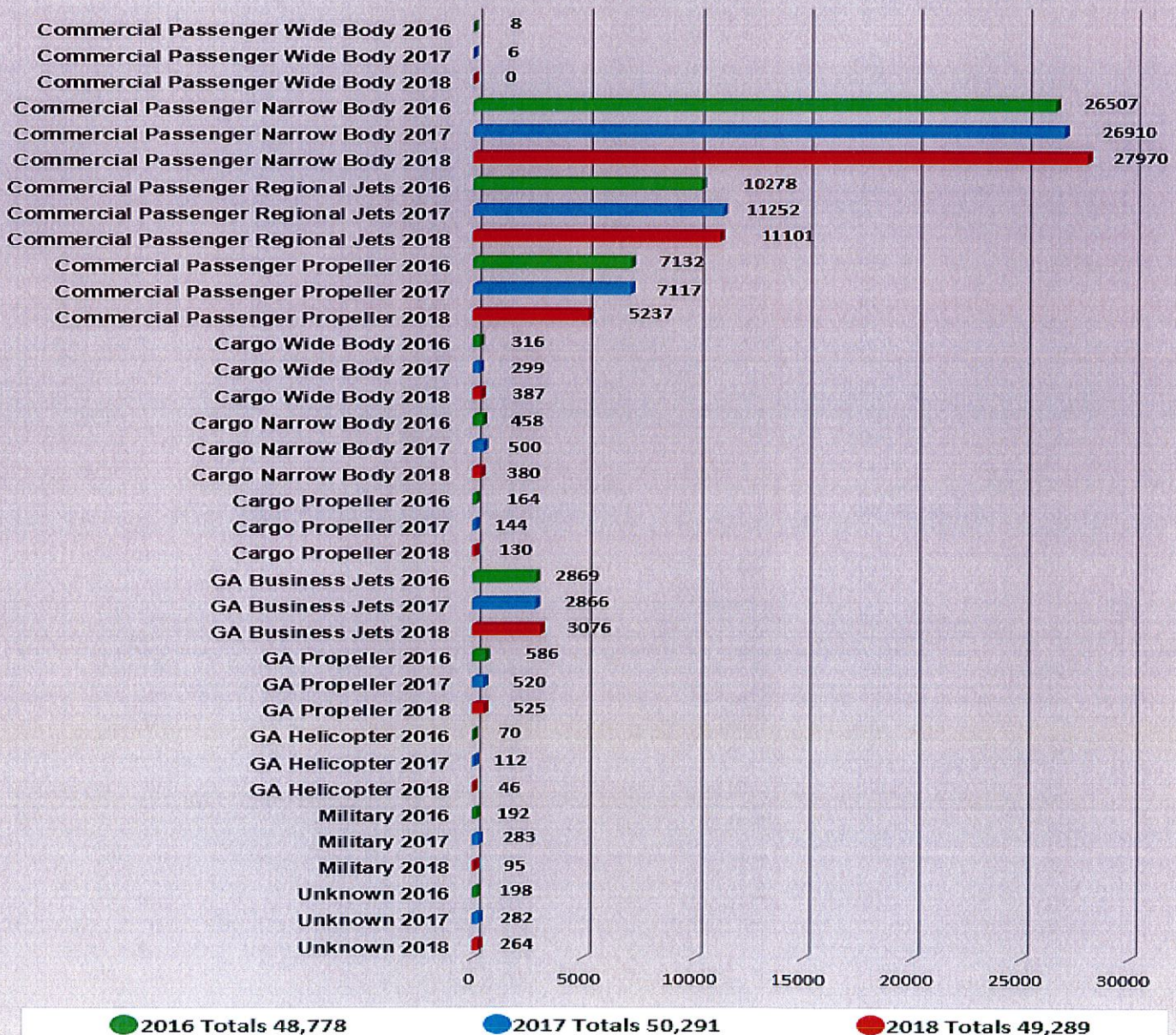
The top twenty airlines accounted for 89.8% of all operations. The top three airlines were Southwest Airlines with 40.6% of all operations, followed by Cape Air (7.4%), and then by American Airlines (7.3%). Eleven regional commercial passenger jet airlines that serve St. Louis Lambert International Airport were in the top twenty airlines and accounted for 18.4% of the 3rd Quarter 2018 operations. There were 68 Part 121 and Part 135 airlines that utilized St. Louis Lambert International Airport during this period. Part 121 airlines are commercial scheduled airlines and Part 135 airlines are charter and air taxi.



OPERATIONS BY TYPE OF SERVICE

In the 3rd Quarter of 2018, commercial passenger narrow body operations increased +3.9% from the same period in 2017. Commercial passenger regional jets operations decreased -1.3% from the same period in 2017. The commercial passenger propeller operations decreased -35.9% from 2017 continuing the slide in the 3rd Quarter of 2018. Overall, passenger propeller operations have decreased by 5,085 operations in 2018. Cargo wide body operations increased +29.4% from 299 in 2017 to 387 in 2018. General aviation business jet operations were down -7.3% from 2017. Military operations are filtered so most operations are not reported. Overall, operations in 2018 are down -2.0% from 2017.

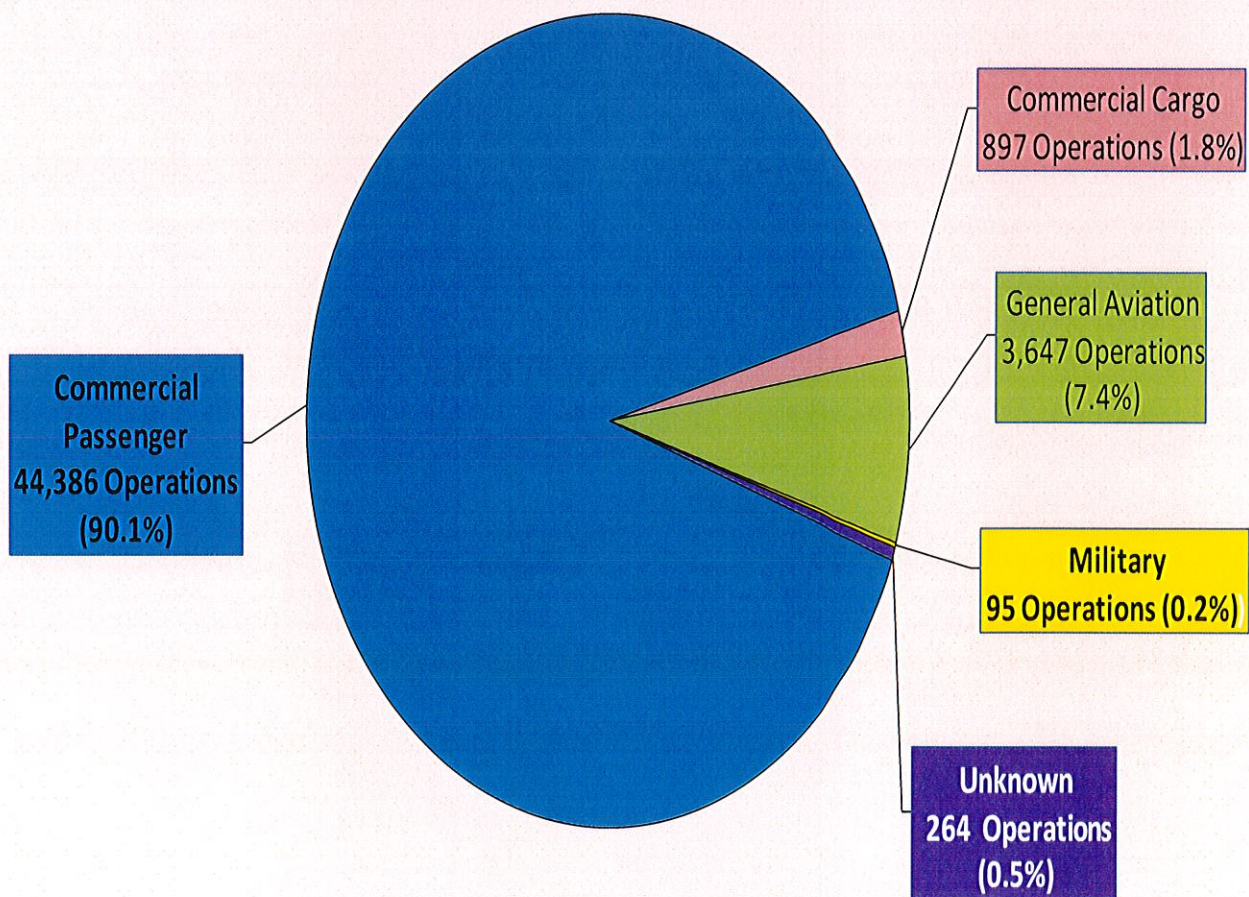
Comparison 3rd Quarters 2016-2018 Fleet



OPERATIONS BY TYPE OF SERVICE

Commercial Passenger, Commercial Cargo, General Aviation, Military, and Unknown Operations are the five categories of operations. The Unknown Operations category include aircraft that were not identified by either the airline or aircraft equipment type, or both. The largest number of operations was Commercial Passengers with 90.1%. General Aviation was at 7.4%, Commercial Cargo had 1.8%, and the Unknown category represented 0.5% of the total operations. Reported Military operations were at 0.2%, however, military operations are filtered and not all military operations are reported in the data.

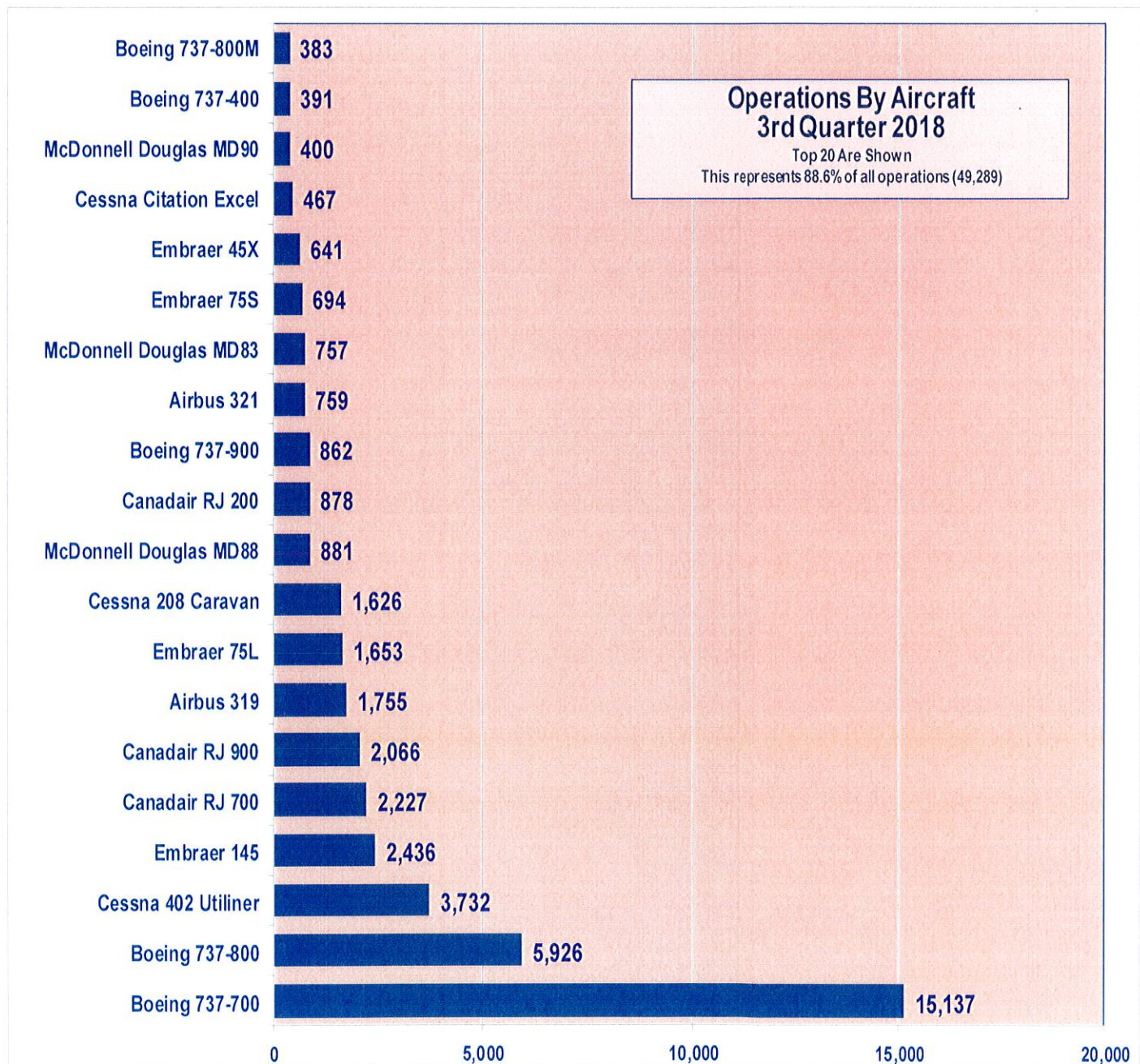
Operations by Type of Service
3rd Quarter 2018



OPERATIONS BY AIRCRAFT

Shown below are top twenty aircraft with the most operations for 3rd Quarter 2018. The Boeing 737-700 had the most operations at 15,137 (30.7%), followed by the Boeing 737-800 with 5,926 operations (12.0%) and the Cessna 402 Utiliner with 3,732 operations (7.6%). Six of the top ten aircraft at the Airport are operated by regional carriers. There were 158 different types of aircraft that landed at St. Louis Lambert International Airport during this period according to Harris data*.

*The Harris Airport and Noise Management System (ANOMS) collects FAA air traffic data from the National Airspace System (NAS) and permanent noise monitoring data and correlates flight tracks, noise monitoring events and noise complaints. The ANOMS provides illustrative trends and should not be construed as official traffic counts.



DISTRIBUTION OF TRAFFIC

There were 49,289 operations recorded in the 3rd Quarter of 2018 compared to 50,219 operations in the 3rd Quarter of 2017, a decrease of -2.0%. Runway utilization for Runways 12L/30R and 12R/30L was impacted by ongoing taxiway construction on Taxiways Kilo and Sierra and the rehabilitation of Runway 12L-30R. The chart below shows the total percentages of use for known runways for this period. The most utilized runway for departures was Runway 12R (20.5%). The most utilized runway for arrivals was Runway 30R (11.8%). The crosswind runway 6-24 was the least used runway for this period. The Distribution of Traffic (Eastbound vs. Westbound) for the 3rd Quarter 2018 was 54.1% eastbound and 45.9% westbound operations.

