

9d. Airport Organizational Charts

LAMBERT-ST. LOUIS INTERNATIONAL AIRPORT
ORGANIZATIONAL CHART

August 12, 2013

AIR SERVICE AND BUSINESS DEVELOPMENT

DIRECTOR OF AIRPORTS
CHIEF EXEC OFFICER - 23M

Assistant Director
Air Service and
Business Development - 19M

325-119

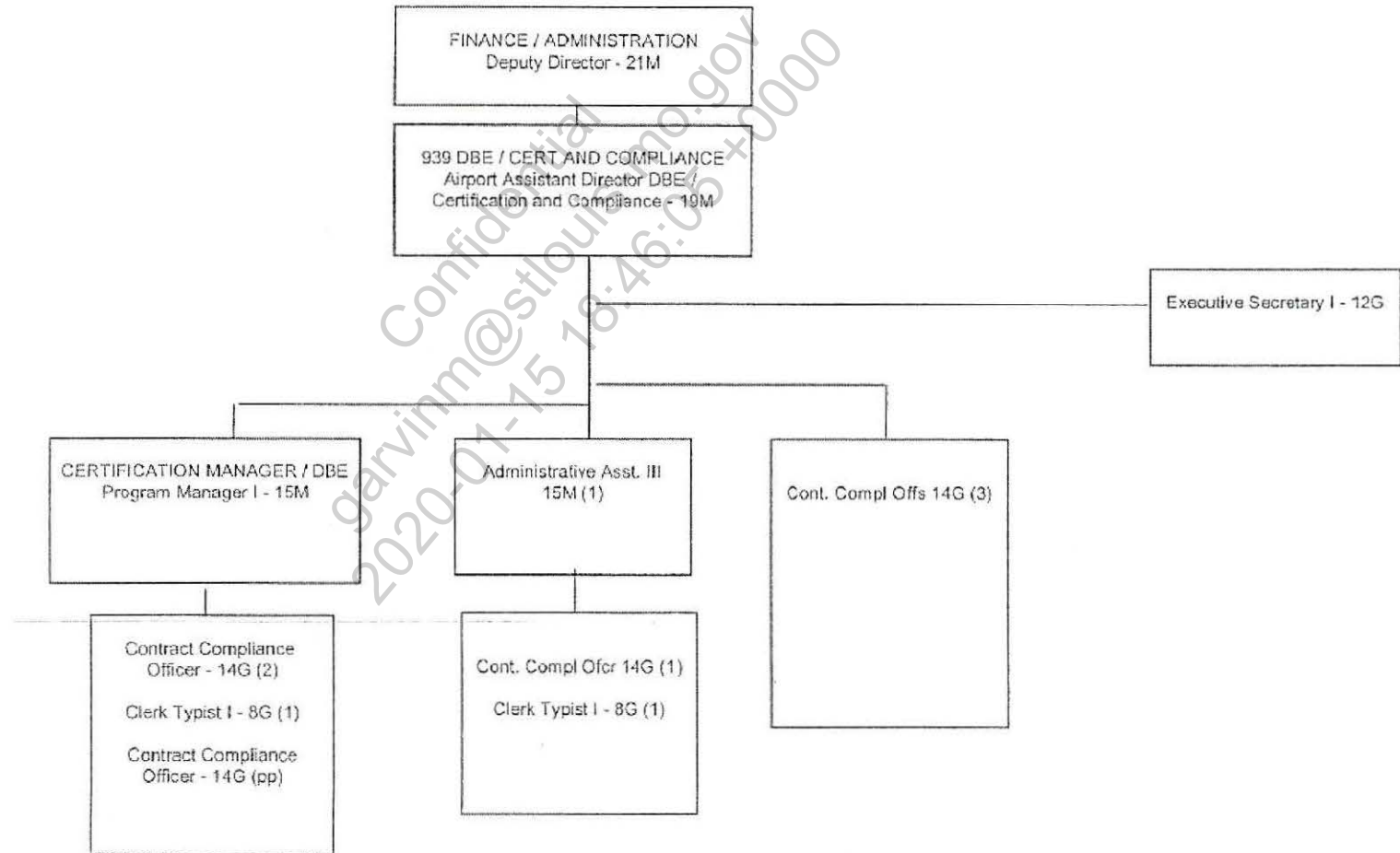
FAA Approved

M. Mulken
Date: JUN 26 2014

LAMBERT-ST. LOUIS INTERNATIONAL AIRPORT
ORGANIZATIONAL CHART

August 12, 2013

DBE / CERTIFICATION AND COMPLIANCE



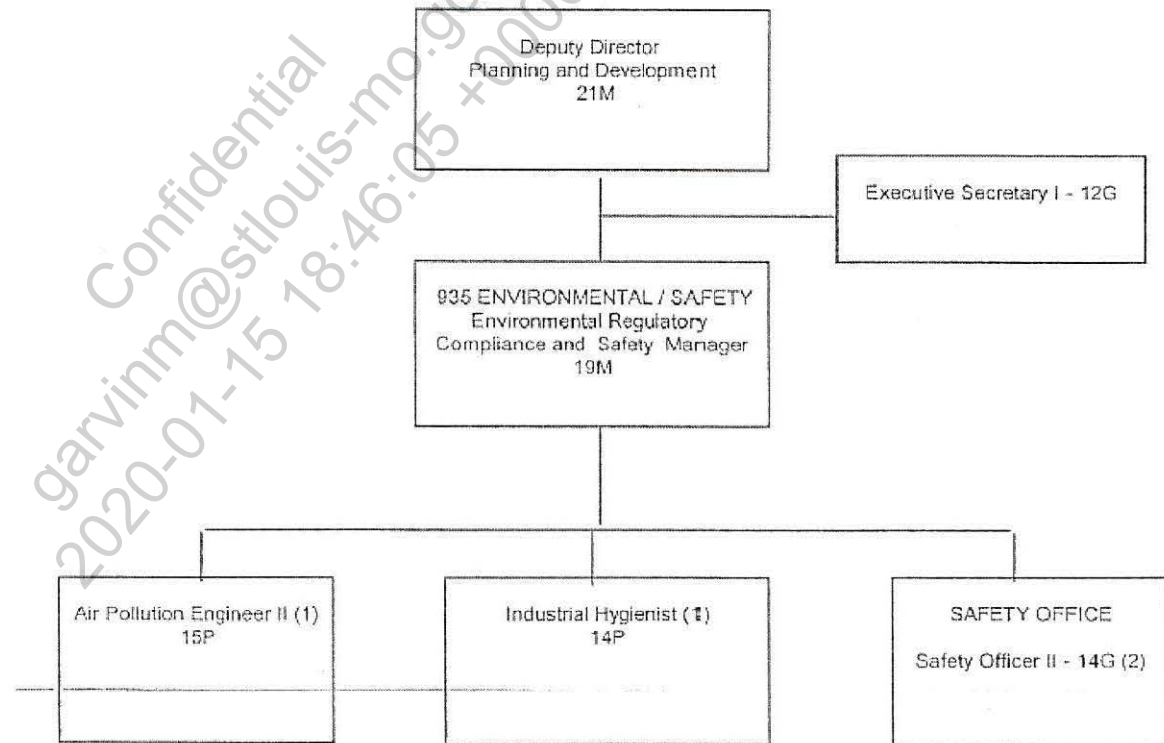
325-120

FAA Approved

Date: JUN 26 2014
Mr. Miller

LAMBERT-ST. LOUIS INTERNATIONAL AIRPORT
ORGANIZATIONAL CHART
August 12, 2013

ENVIRONMENTAL / SAFETY



325-121

FAA Approved

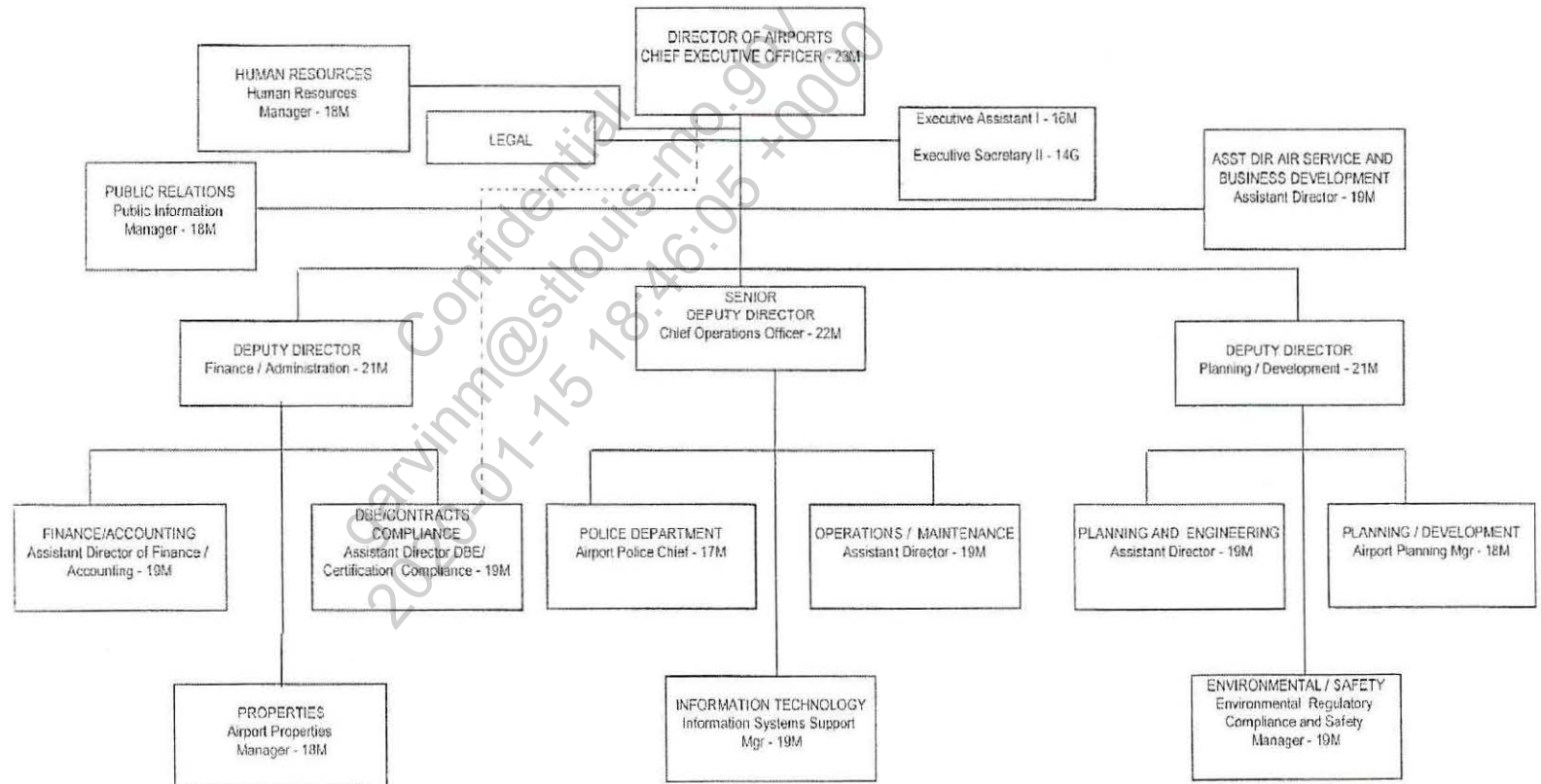
Date: JUN 26 2014

W. Mullen

LAMBERT-ST. LOUIS INTERNATIONAL AIRPORT
ORGANIZATIONAL CHART

August 12, 2013

EXECUTIVE STAFF



325-122

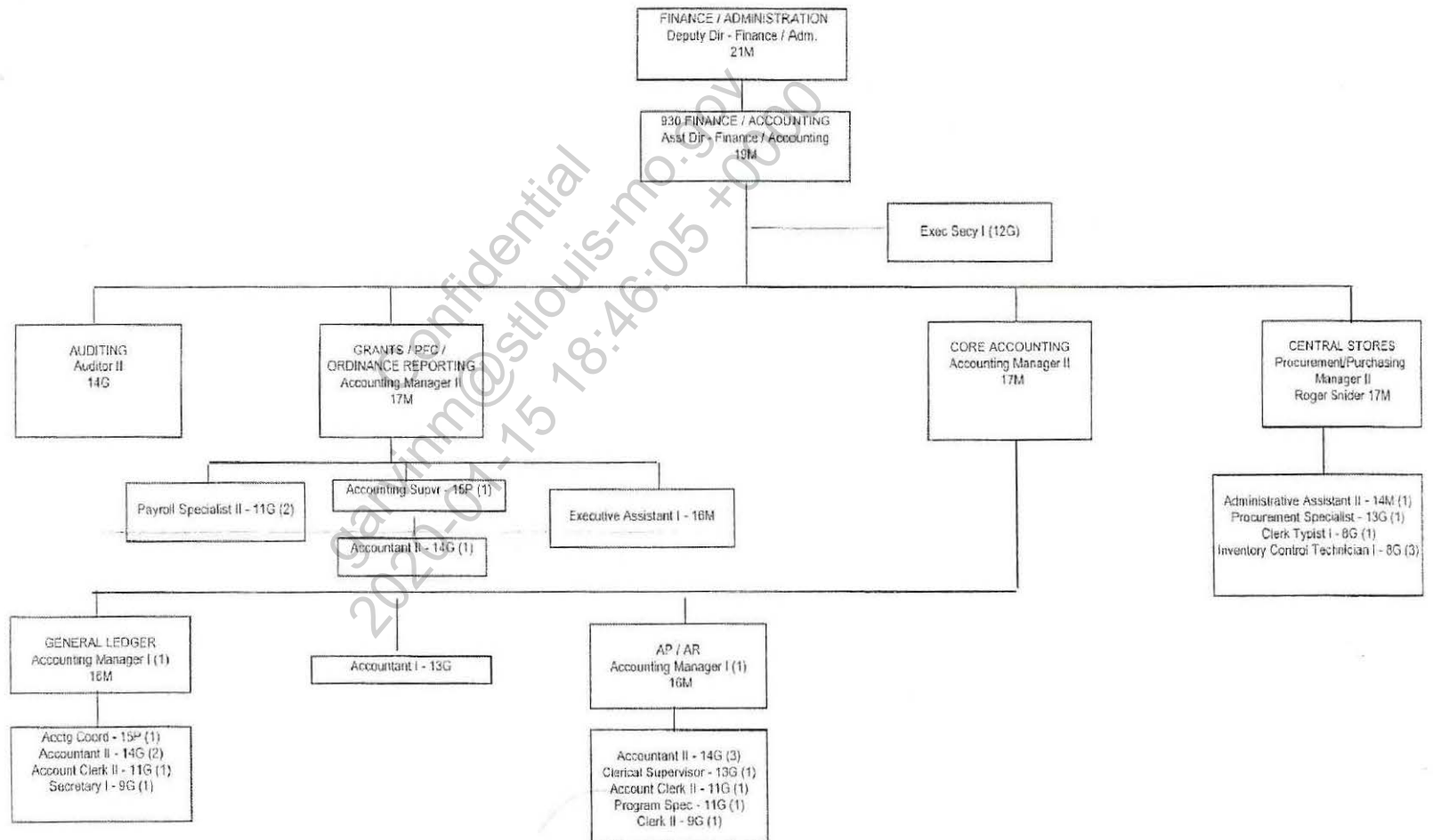
FAA Approved

Date: JUN 26 2014

W. H. Miller

LAMBERT-ST. LOUIS INTERNATIONAL AIRPORT
ORGANIZATIONAL CHART
August 12, 2013

FINANCE / ADMINISTRATION



325-123

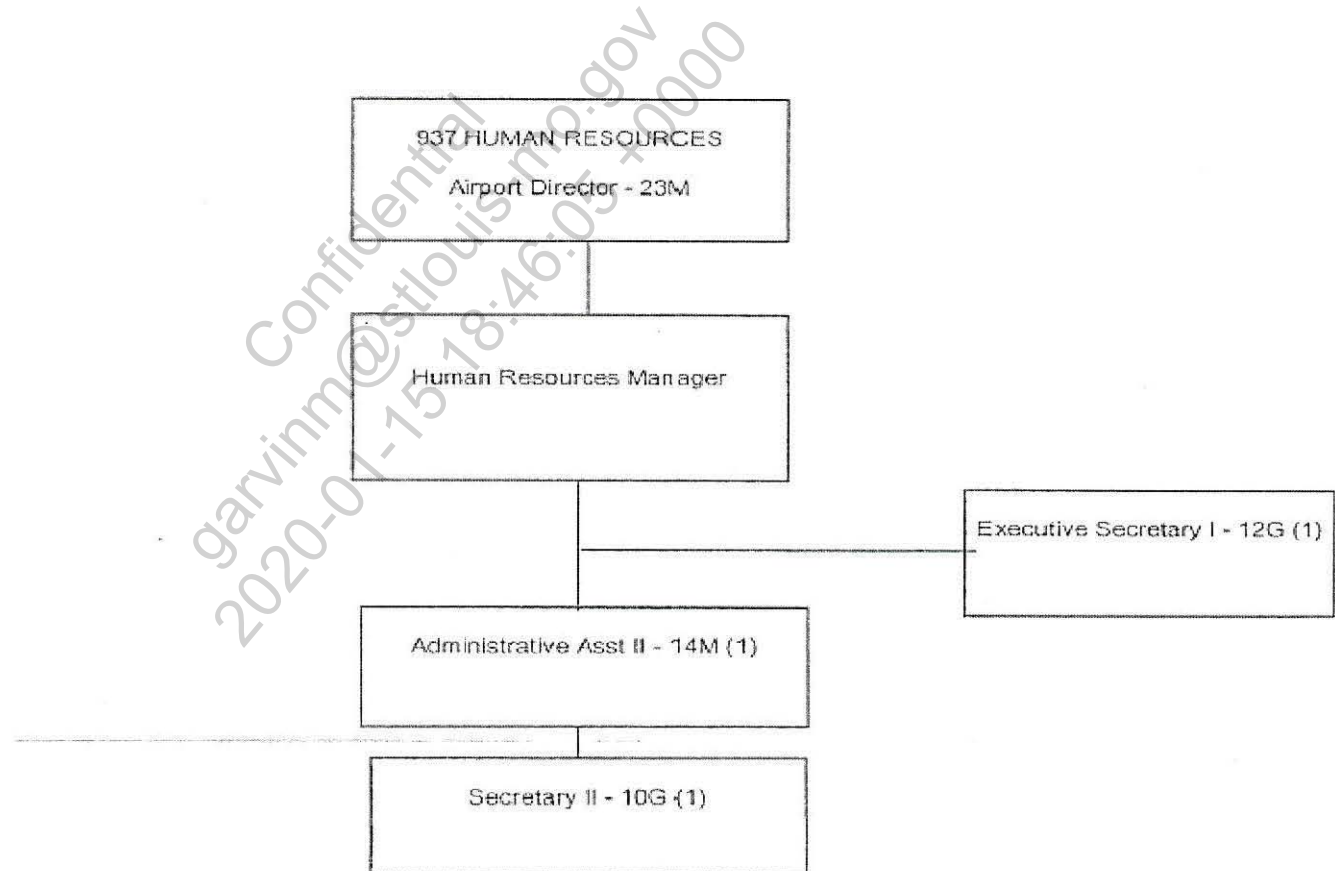
FAA Approved

Date: JUN 26 2014

M. Mullen

LAMBERT-ST. LOUIS INTERNATIONAL AIRPORT
ORGANIZATIONAL CHART
August 12, 2013

HUMAN RESOURCES



325-124

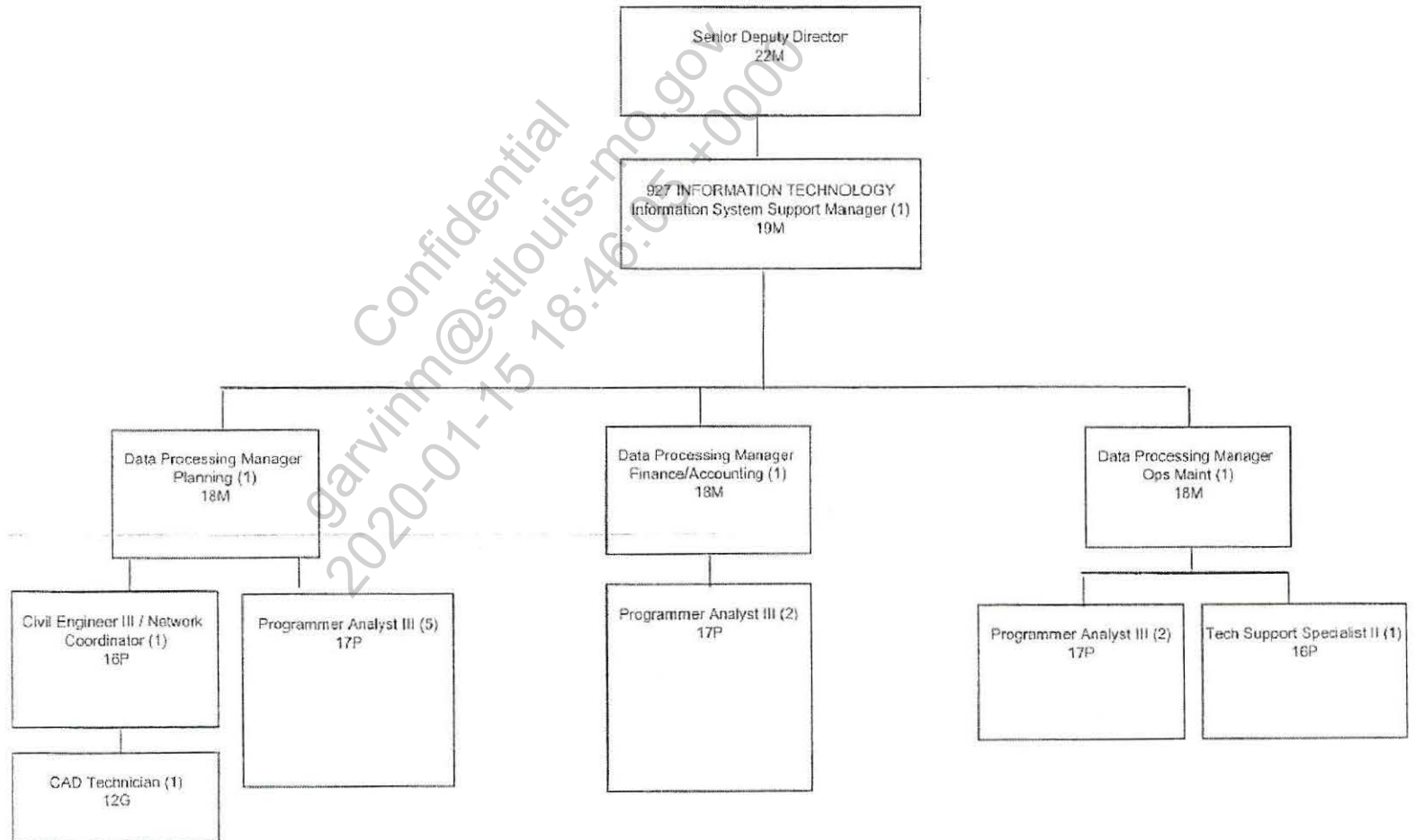
FAA Approved

Date: JUN 26 2014
M. Muller

LAMBERT-ST. LOUIS INTERNATIONAL AIRPORT
ORGANIZATIONAL CHART

August 12, 2013

INFORMATION TECHNOLOGY



325-125

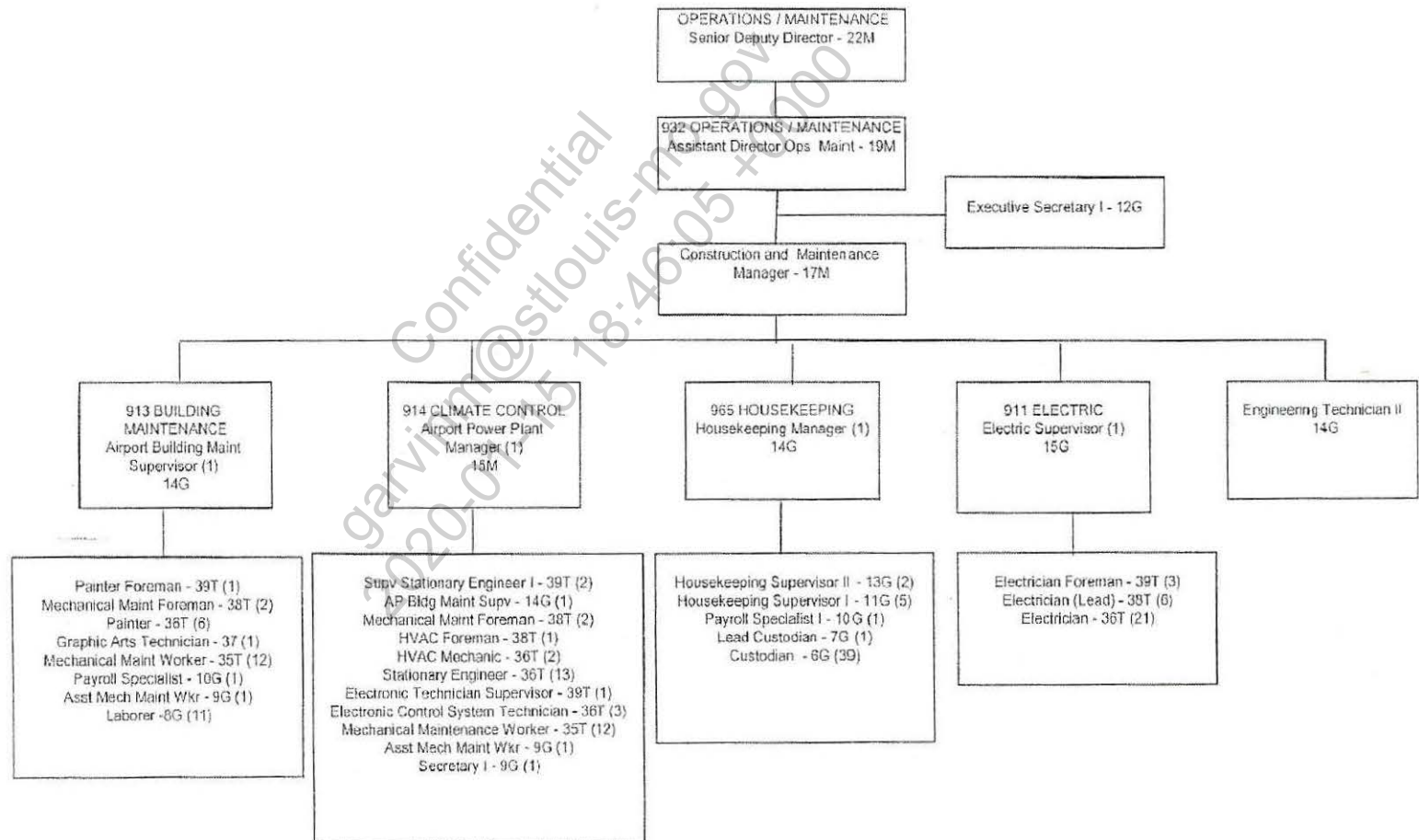
FAA Approved

Date: JUN 26 2014

LAMBERT-ST. LOUIS INTERNATIONAL AIRPORT
ORGANIZATIONAL CHART

August 12, 2013

OPERATIONS AND MAINTENANCE
BUILDING OPERATIONS



325-126

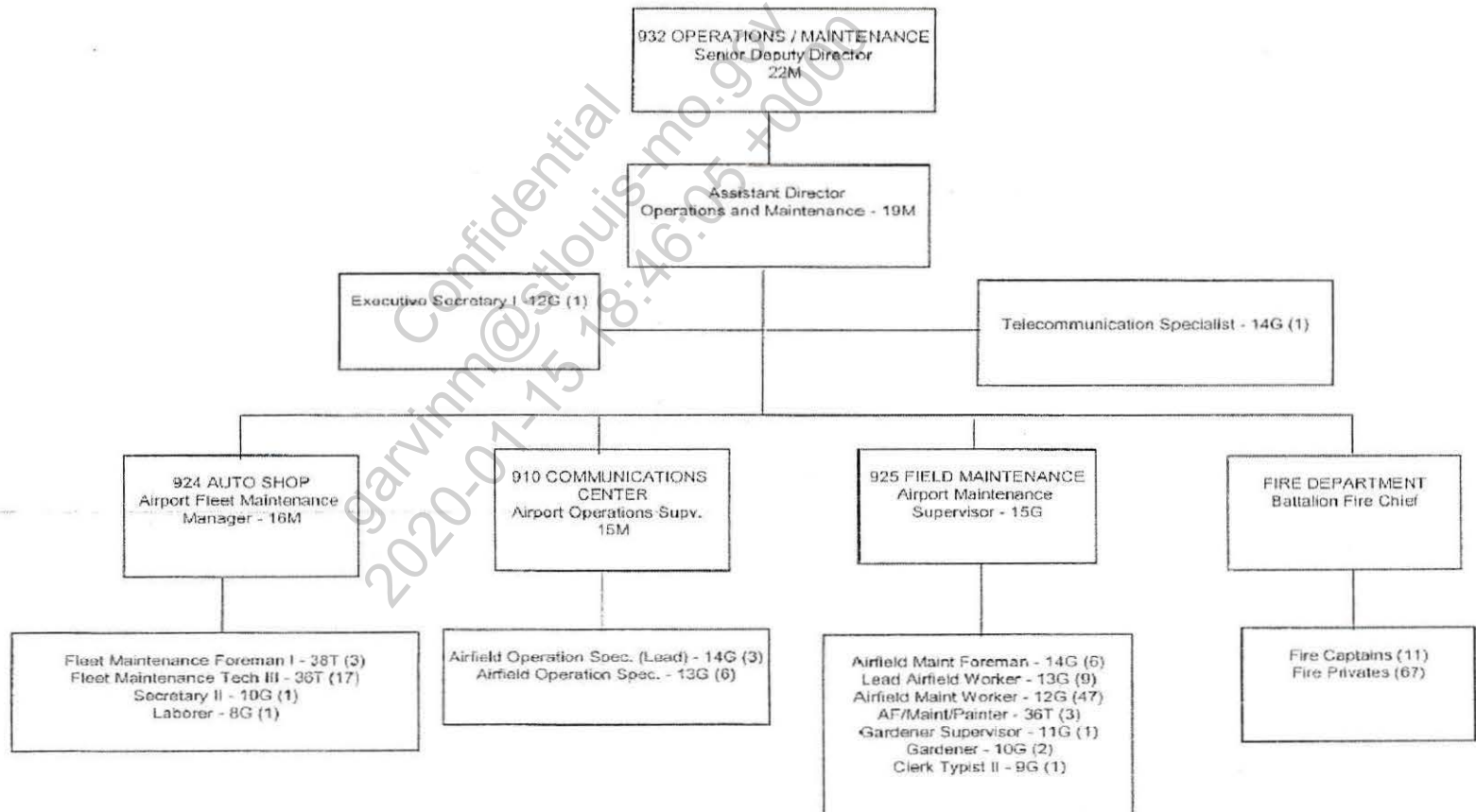
FAA Approved

Date: JUN 26 2014

M. M. Miller

LAMBERT-ST. LOUIS INTERNATIONAL AIRPORT
ORGANIZATIONAL CHART
August 12, 2013

OPERATIONS AND MAINTENANCE
FIELD OPERATIONS



325-127

FAA Approved

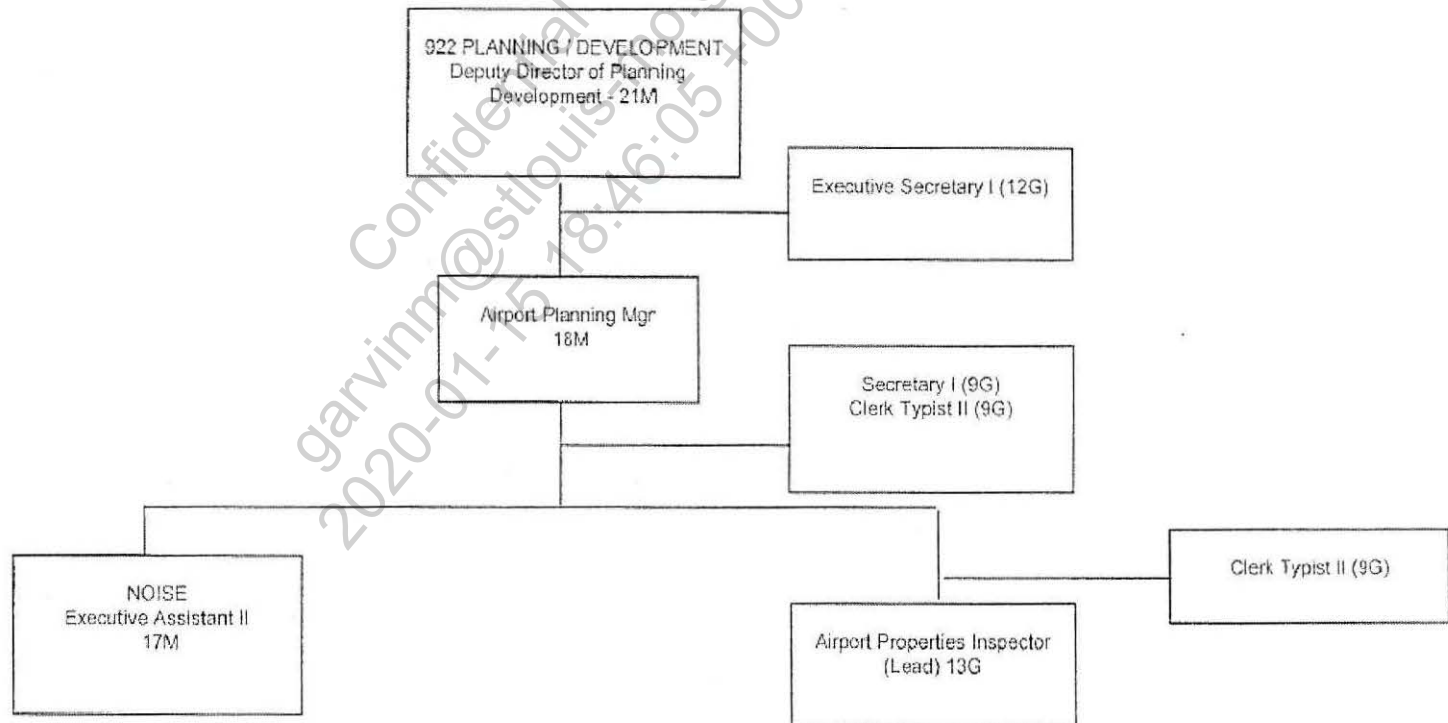
Date: JUN 26 2014

W. H. Nelson

LAMBERT-ST. LOUIS INTERNATIONAL AIRPORT
ORGANIZATIONAL CHART - PROPOSED

August 12, 2013

PLANNING / DEVELOPMENT



325-128

FAA Approved

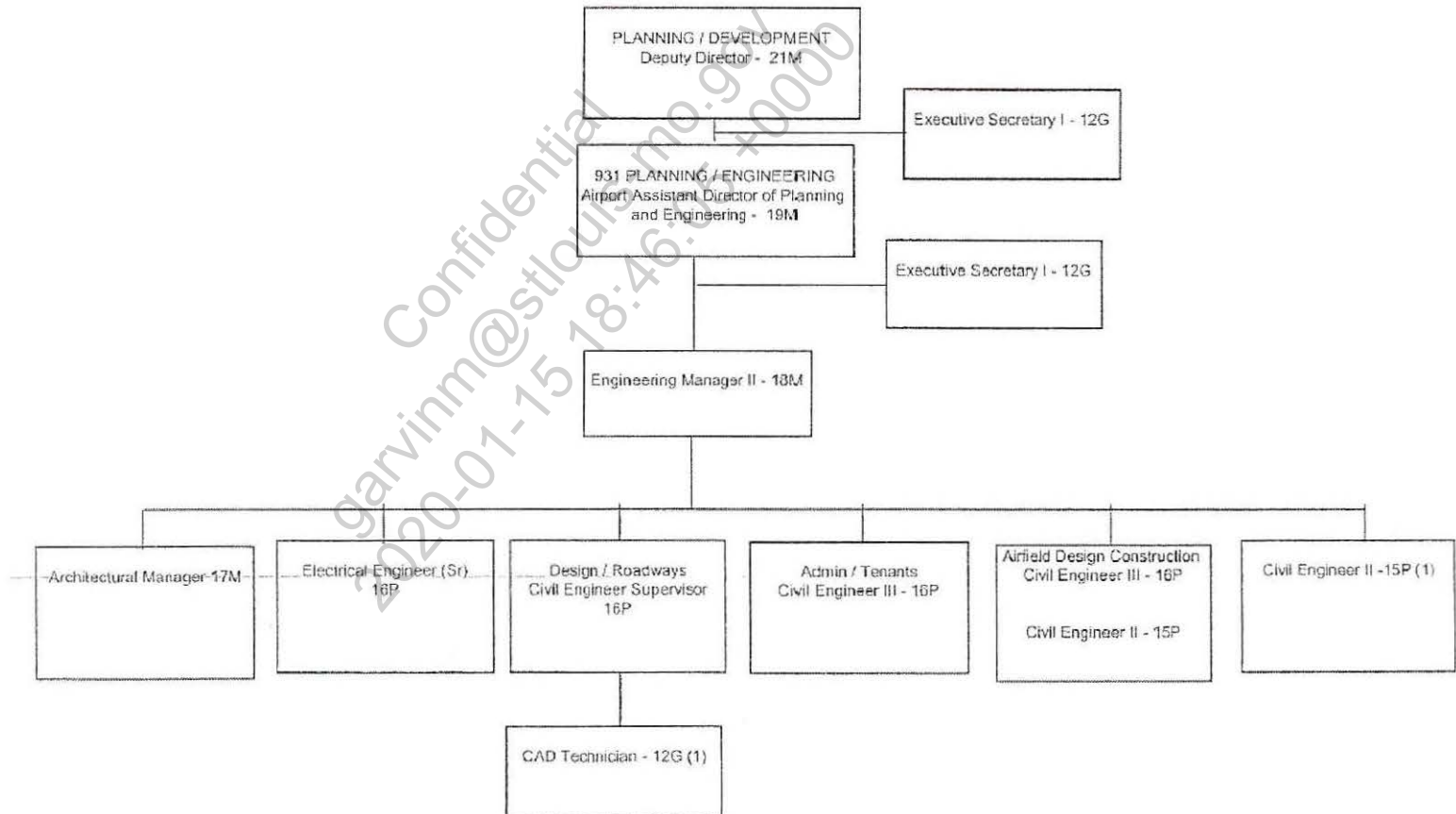
Date: JUN 26 2014

M. Miller

LAMBERT-ST. LOUIS INTERNATIONAL AIRPORT
ORGANIZATIONAL CHART

August 12, 2013

PLANNING / ENGINEERING



325-129

FAA Approved

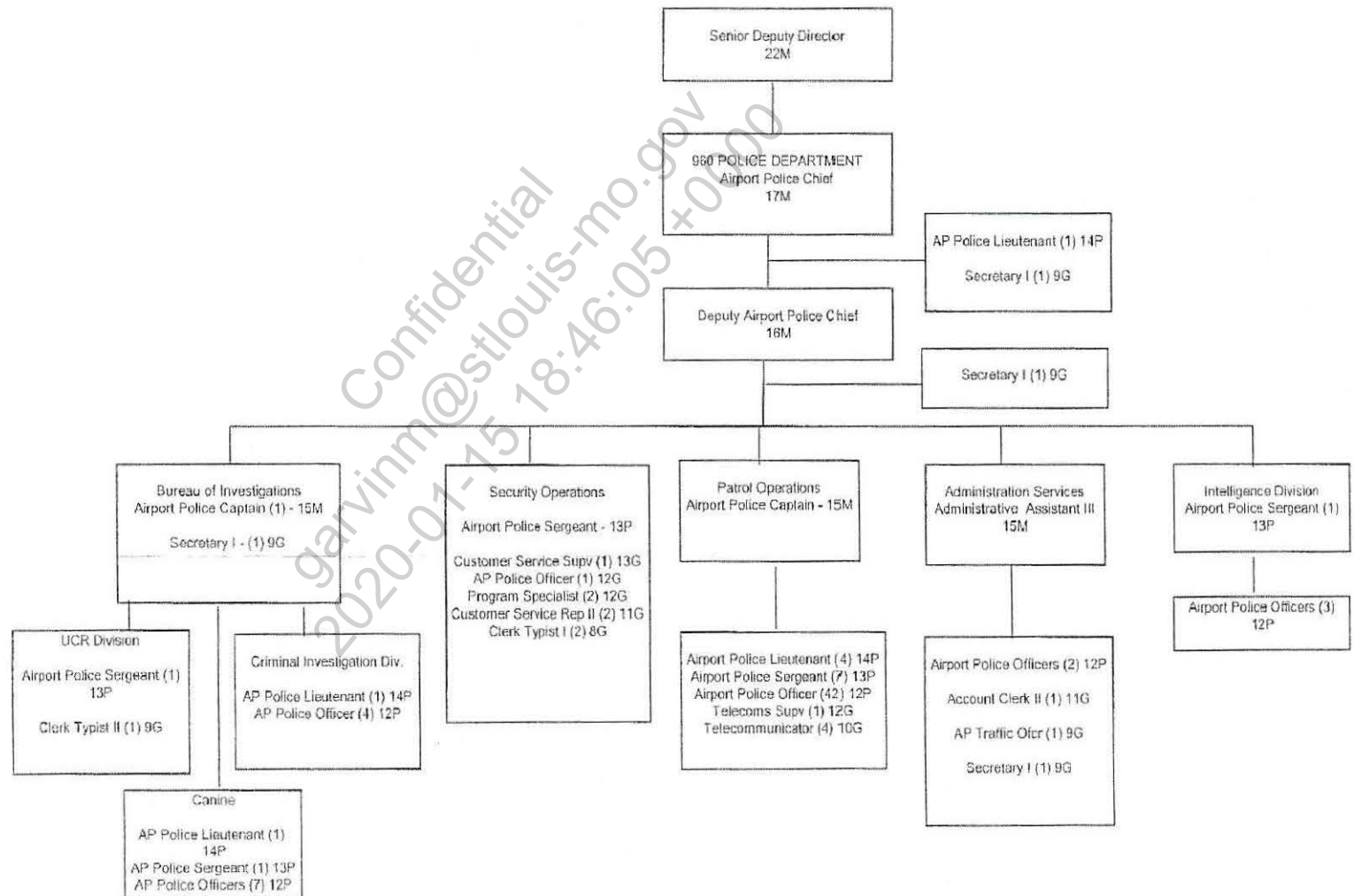
Date: JUN 26 2014

M. Muller

LAMBERT-ST. LOUIS INTERNATIONAL AIRPORT
ORGANIZATIONAL CHART

August 12, 2013

POLICE DEPARTMENT



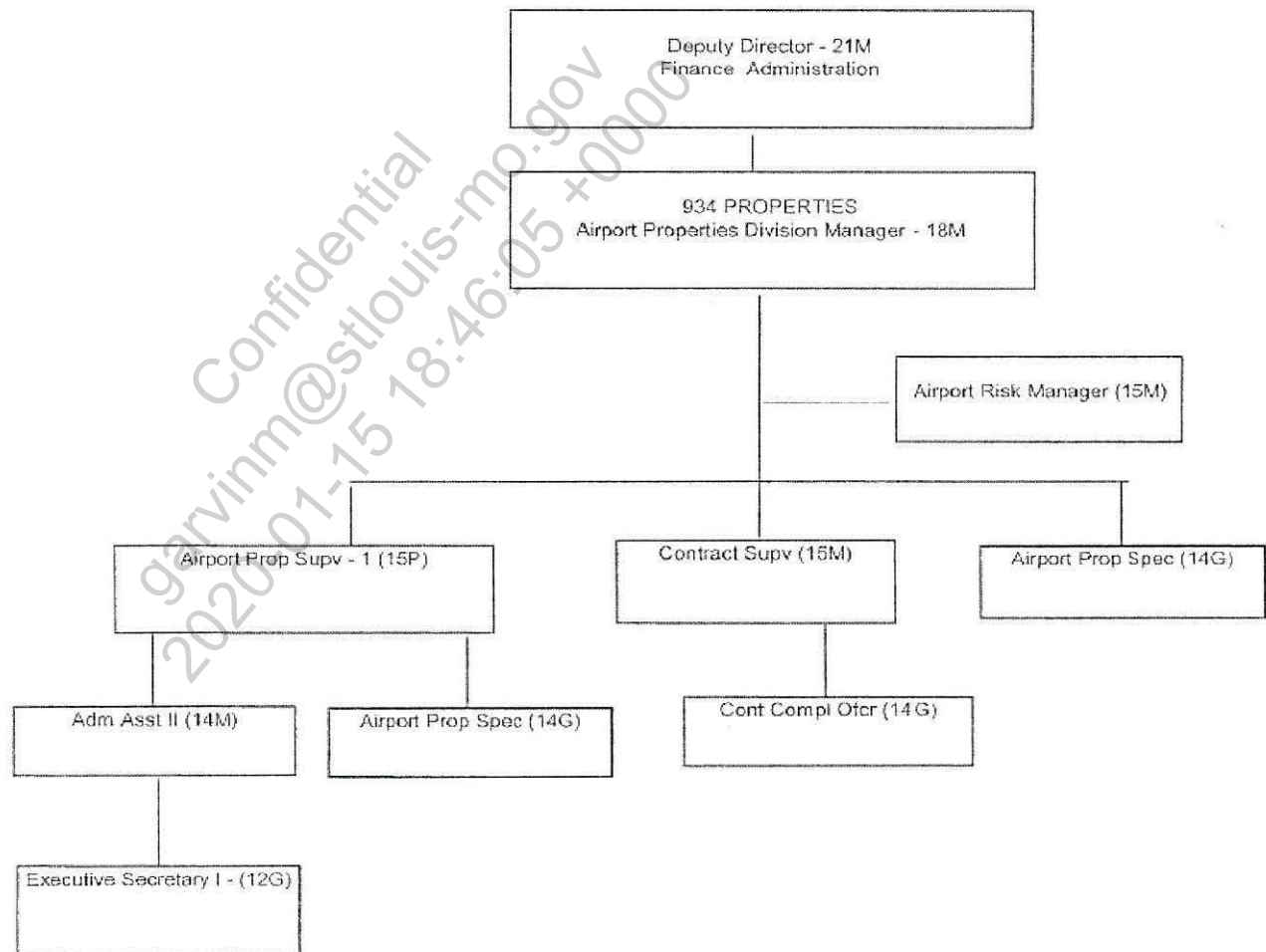
325-130

FAA Approved

Date: JUN 26 2014

M. Allen

LAMBERT ST. LOUIS INTERNATIONAL AIRPORT
ORGANIZATIONAL CHART
August 12, 2013
PROPERTIES



325-131

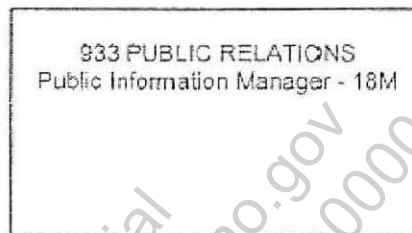
FAA Approved

Date: JUN 26 2014
Mr. Muller

LAMBERT-ST. LOUIS INTERNATIONAL AIRPORT
ORGANIZATIONAL CHART

August 12, 2013

PUBLIC RELATIONS



325-132

FAA Approved

M. Muller
Date: JUN 26 2014