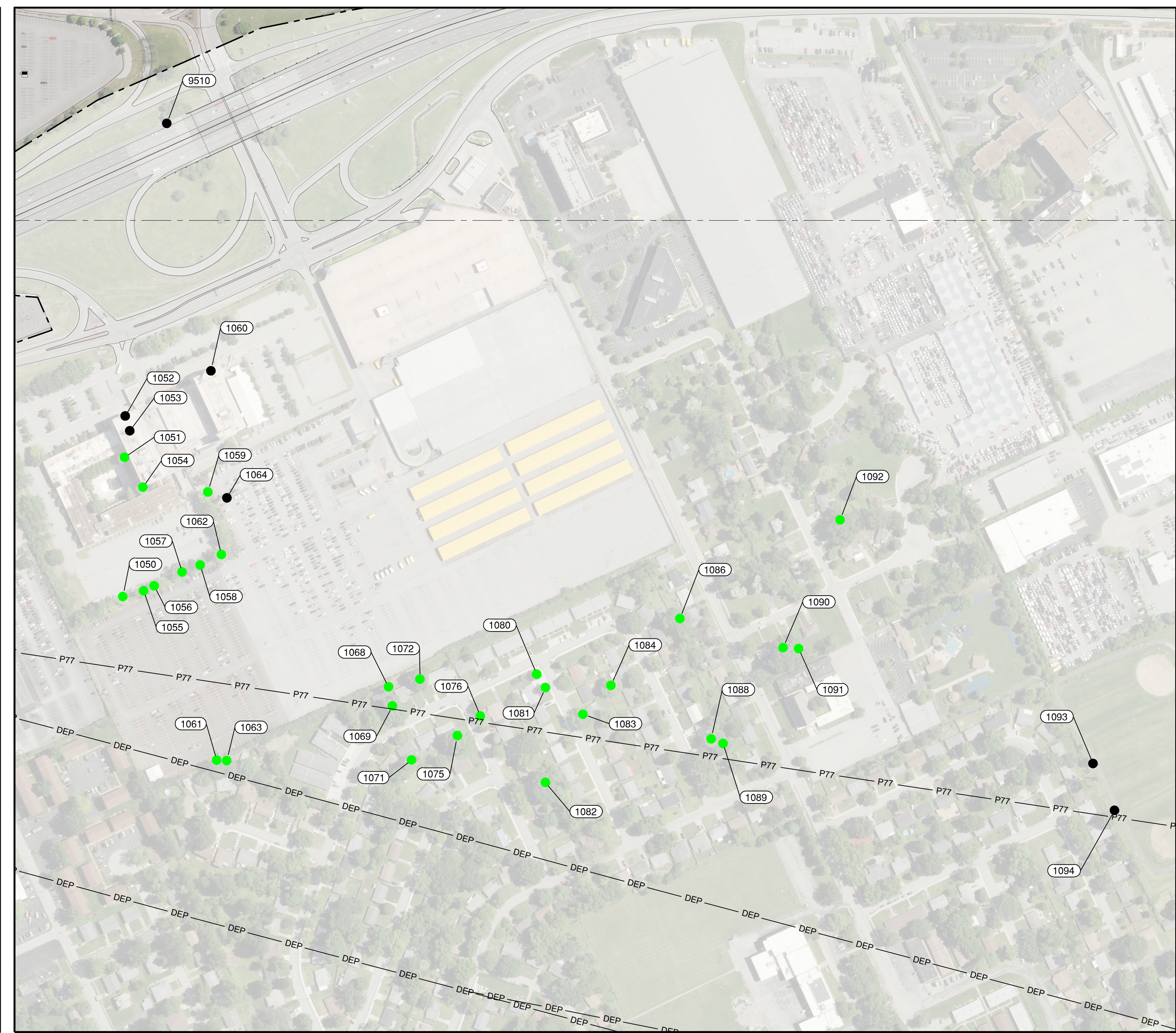
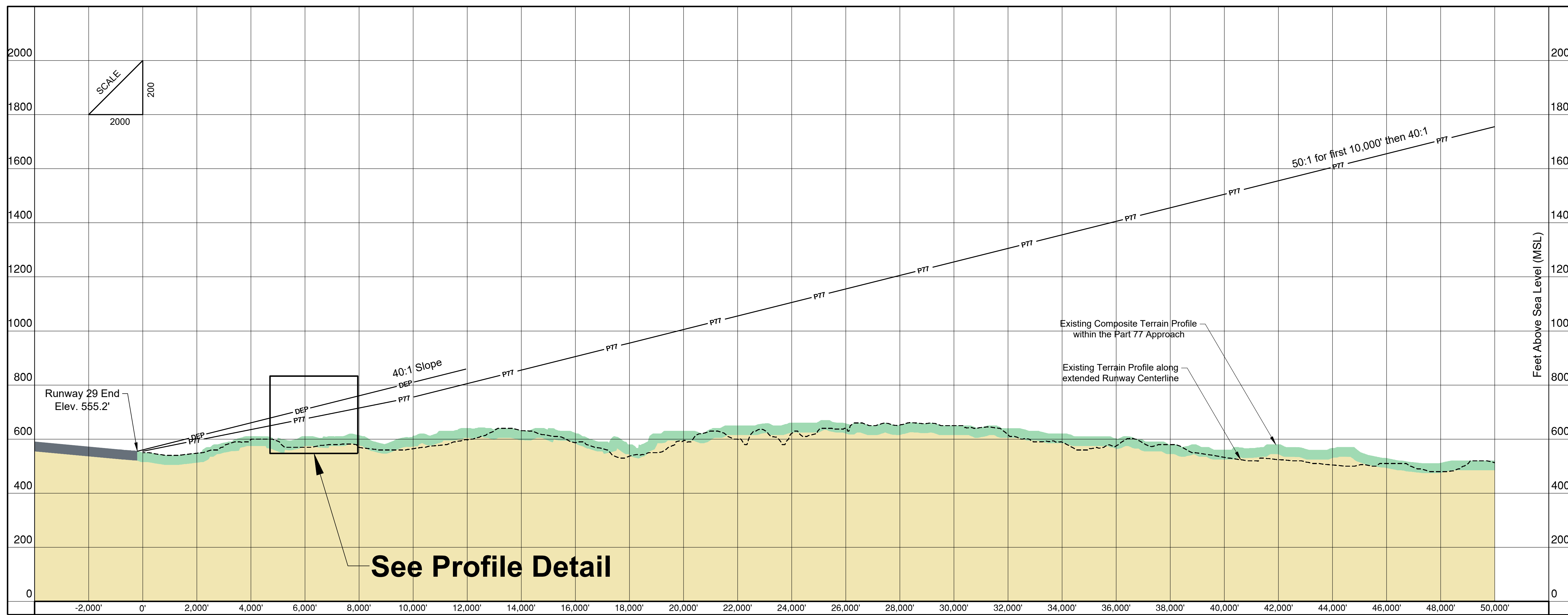




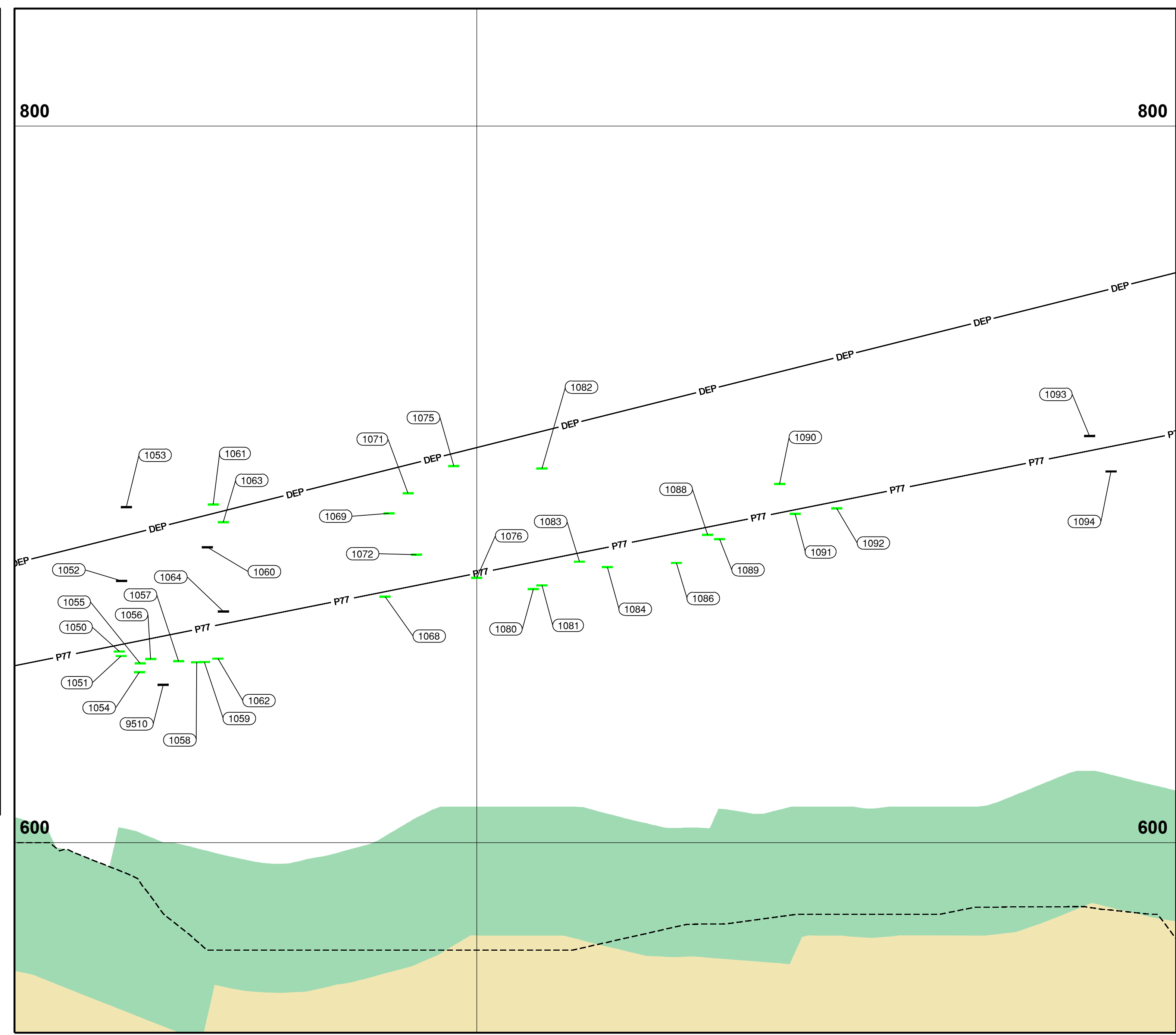
Runway 29 Plan View
Scale 1"=2000'



Plan Detail
Scale 1"=200'



Runway 29 Profile View
Scale 1"=2000' Horizontal
1"=200' Vertical



Lineal Feet Beyond Start of Approach Surface | Lineal Feet Before Start of Approach Surface

- General Notes**
1. Base Map was developed using aerial photo and photogrammetric mapping dated June 2020. See Inner Portion of the Approach Surface Drawings for roads and obstructions within first vertical 100' of runway.
 2. Obstacles identified from 2018 aerial mapping, collected in accordance with AC 150/5300-18B standards.
 3. Objects within 50 feet or greater clearance of all surfaces have not been depicted.
 4. Trees within 15 feet of the Part 77 Surface are identified for planning purposes.
 5. Composite ground profile collected from aerial mapping and digital elevation models available to the public, and are depicted for planning purposes.
 6. Future development and/or land use identified will be implemented in accordance with airspace requirements applicable at that time. No new man-made obstructions will be created which impact approach capabilities to the runway.

Legend

Existing	Future	Description
---	---	Airport Property Line
---	---	FAR Part 77 Surface
---	---	Departure Surface
---	---	Avigation Easement
●	●	Man Made Structure Elevation Point (Plan View / Profile View)
●	●	Tree Elevation Point (Plan View / Profile View)

