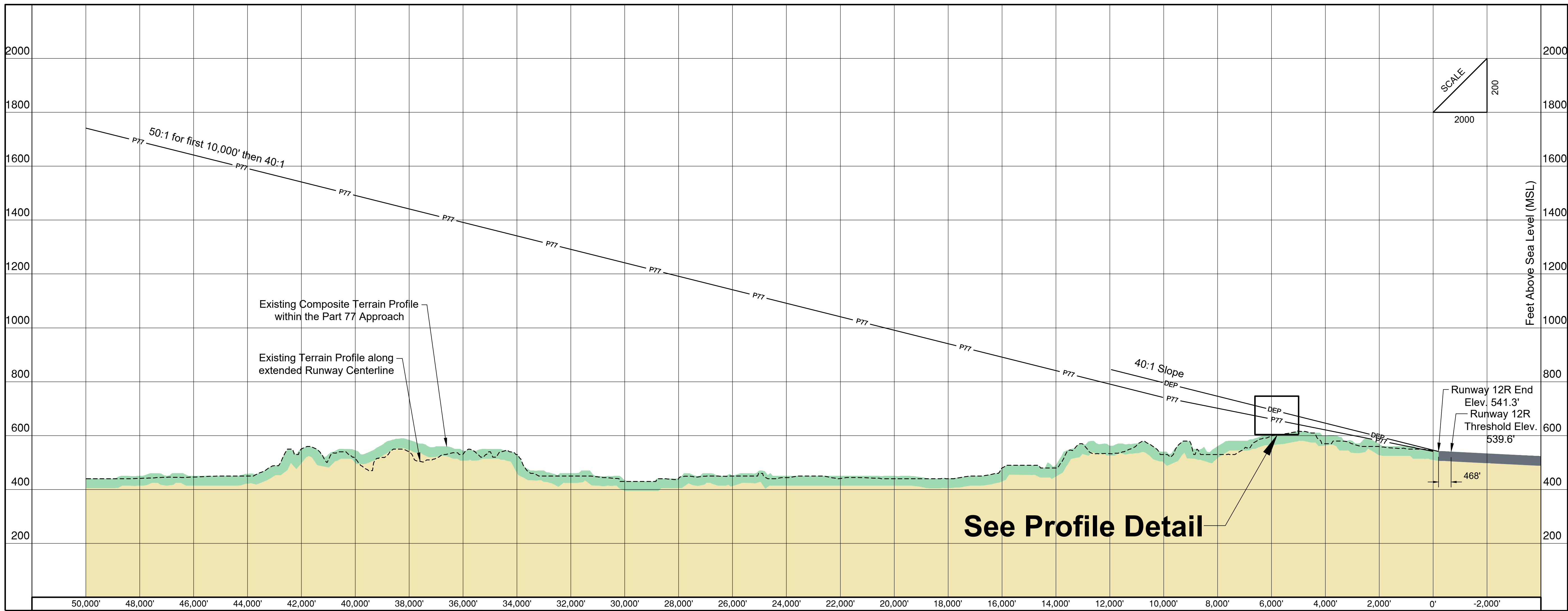
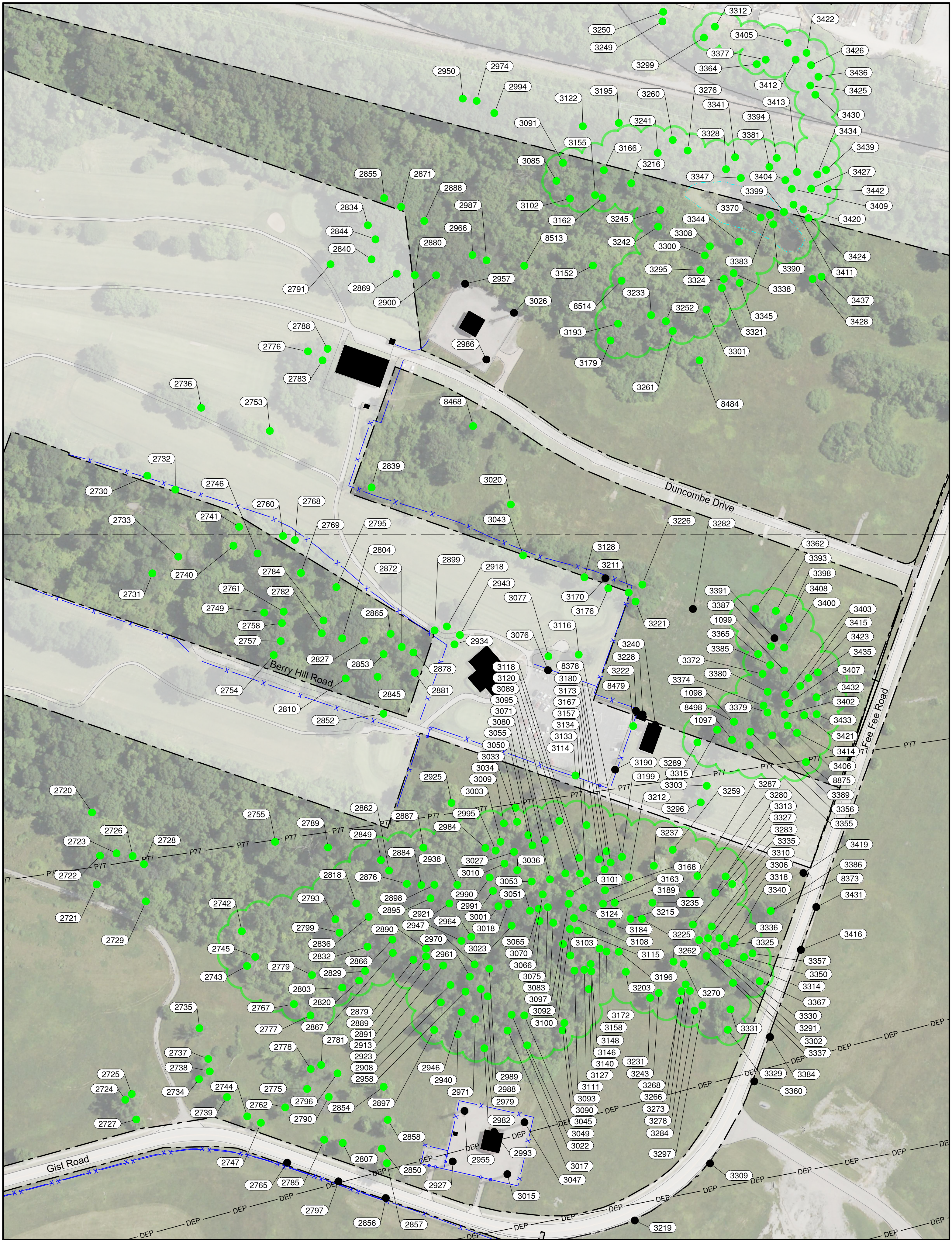


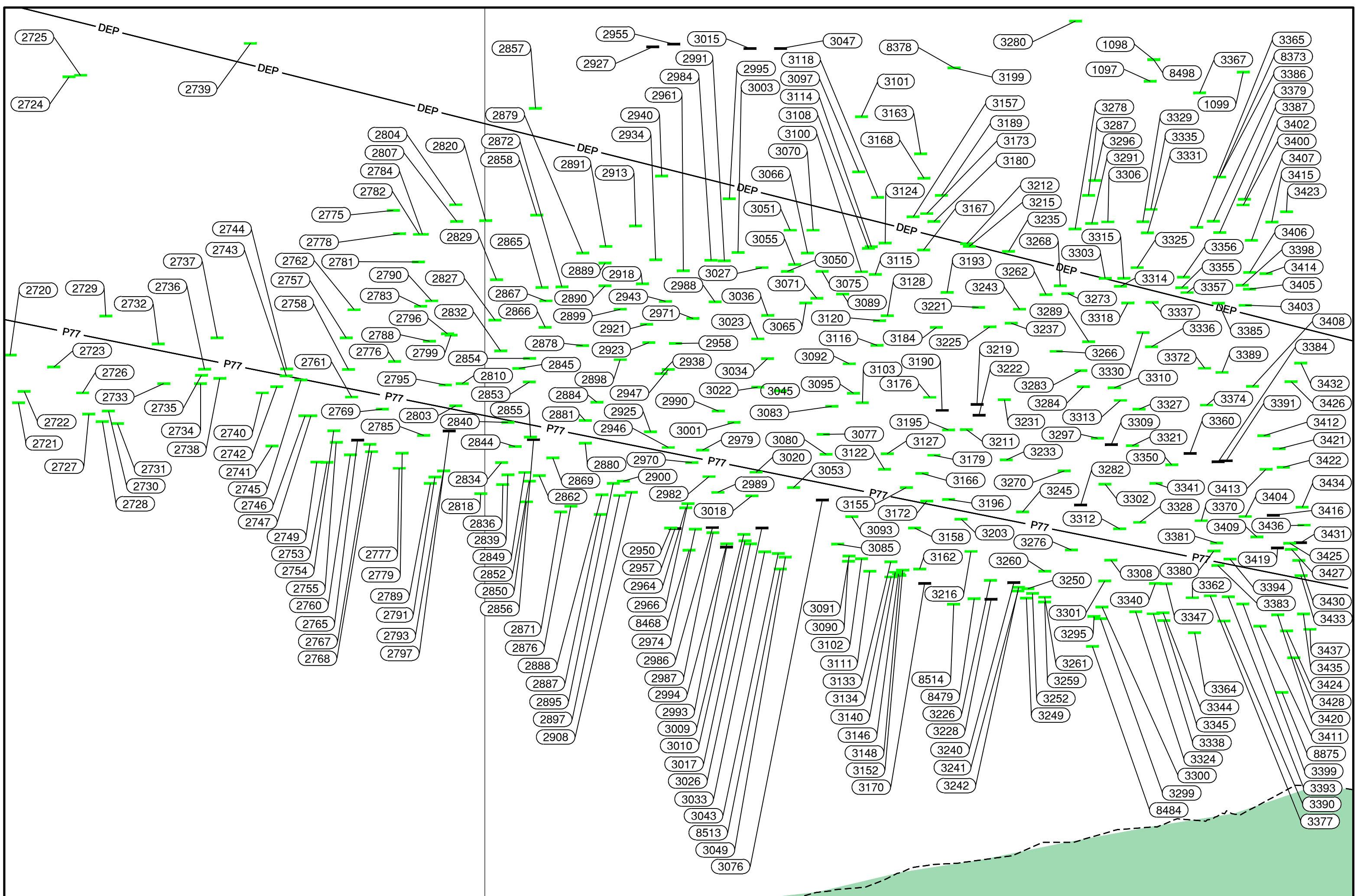
Runway 12R Plan View
Scale 1"=2000'



Runway 12R Profile View
Scale 1"=2000' Horizontal
1"=200' Vertical



Plan Detail
Scale 1"=100'



6,000' Profile Detail
Scale 1"=100'

General Notes

- Base Map was developed using aerial photo and photogrammetric mapping dated June 2020. See Inner Portion of the Approach Surface Drawings for roads and obstructions within first vertical 100' of runway.
- Obstacles identified from 2018 aerial mapping, collected in accordance with AC 150/5300-18B standards.
- Objects within 50 feet or greater clearance of all surfaces have not been depicted.
- Trees within 15 feet of the Part 77 Surface are identified for planning purposes.
- Composite Ground Profile Collected From Aerial Mapping And Digital Elevation Models Available To The Public, And Are Decided For Planning Purposes.
- Future development and/or land use identified will be implemented in accordance with airspace requirements applicable at that time. No new man-made obstructions will be created which impact approach capabilities to the runway.

Legend		Description
Existing	Future	Airport Property Line
P77	P77	FAR Part 77 Surface
DEP	DEP	Departure Surface
		Aviation Easement
		Group Of Trees
		Man Made Structure Elevation Point (Plan View / Profile View)
		Tree Elevation Point (Plan View / Profile View)

